

Product datasheet for TA810172

Calcium binding protein P22 (CHP1) Mouse Monoclonal Antibody [Clone ID: OT11D11]

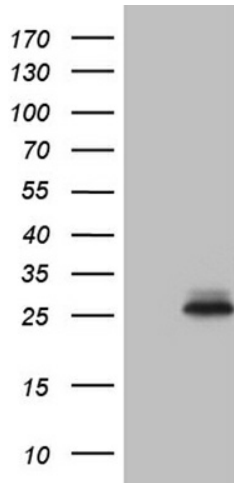
Product data:

Product Type:	Primary Antibodies
Clone Name:	OT11D11
Applications:	IHC, WB
Recommend Dilution:	WB 1:500~2000, IHC 1:250
Reactivity:	Human
Host:	Mouse
Isotype:	IgG1
Clonality:	Monoclonal
Immunogen:	Full length human recombinant protein of human CHP1 (NP_009167) produced in HEK293T cell.
Formulation:	PBS (PH 7.3) containing 1% BSA, 50% glycerol and 0.02% sodium azide.
Concentration:	1 mg/ml
Purification:	Purified from mouse ascites fluids or tissue culture supernatant by affinity chromatography (protein A/G)
Predicted Protein Size:	22.3 kDa
Gene Name:	calcineurin like EF-hand protein 1
Database Link:	NP_009167 Entrez Gene 11261 Human
Background:	This gene encodes a phosphoprotein that binds to the Na ⁺ /H ⁺ exchanger NHE1. This protein serves as an essential cofactor which supports the physiological activity of NHE family members and may play a role in the mitogenic regulation of NHE1. The protein shares similarity with calcineurin B and calmodulin and it is also known to be an endogenous inhibitor of calcineurin activity. [provided by RefSeq, Jul 2008]
Synonyms:	CHP; p22; p24; Sid470p; SLC9A1BP
Protein Pathways:	Alzheimer's disease, Amyotrophic lateral sclerosis (ALS), Apoptosis, Axon guidance, B cell receptor signaling pathway, Calcium signaling pathway, Long-term potentiation, MAPK signaling pathway, Natural killer cell mediated cytotoxicity, Oocyte meiosis, T cell receptor signaling pathway, VEGF signaling pathway, Wnt signaling pathway

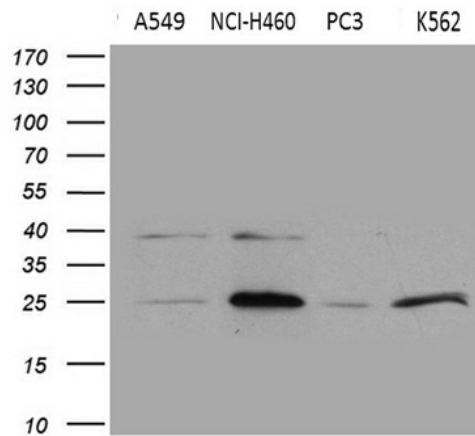


[View online »](#)

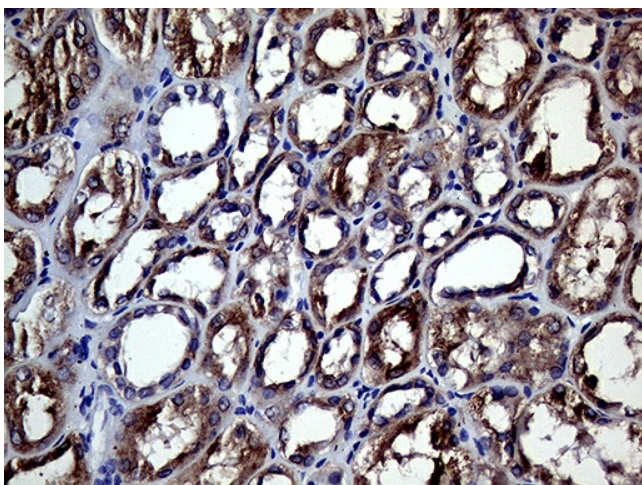
Product images:



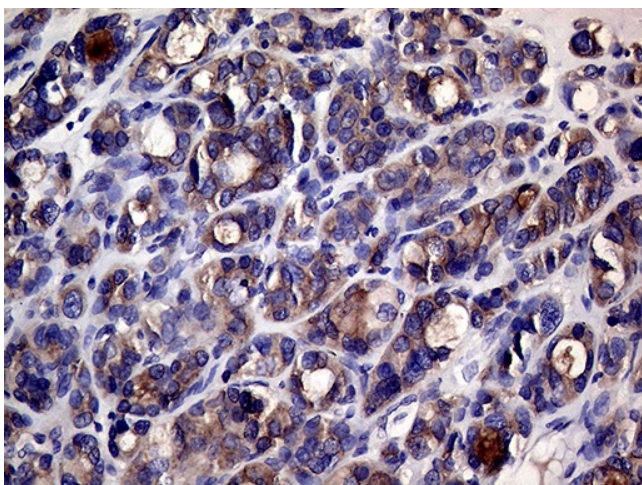
HEK293T cells were transfected with the pCMV6-ENTRY control (Left lane) or pCMV6-ENTRY CHP1 ([RC201928], Right lane) cDNA for 48 hrs and lysed. Equivalent amounts of cell lysates (5 ug per lane) were separated by SDS-PAGE and immunoblotted with anti-CHP1 (1:2000). Positive lysates [LY402116] (100ug) and [LC402116] (20ug) can be purchased separately from OriGene.



Western blot analysis of extracts (35ug) from 4 different cell lines by using anti-CHP1 monoclonal antibody (1:500).



Immunohistochemical staining of paraffin-embedded Human Kidney tissue within the normal limits using anti-CHP1 mouse monoclonal antibody. (Heat-induced epitope retrieval by 1mM EDTA in 10mM Tris buffer (pH8.5) at 120°C for 3min, TA810172) (1:250)



Immunohistochemical staining of paraffin-embedded Carcinoma of Human thyroid tissue using anti-CHP1 mouse monoclonal antibody. (Heat-induced epitope retrieval by 1mM EDTA in 10mM Tris buffer (pH8.5) at 120°C for 3min, TA810172) (1:250)