

## Product datasheet for **TA809856**

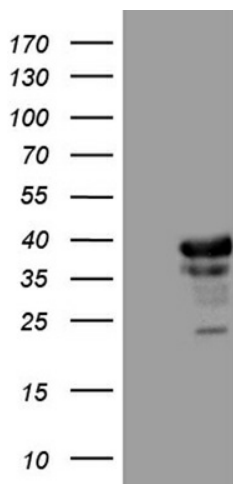
### Transaldolase 1 (TALDO1) Mouse Monoclonal Antibody [Clone ID: OTI1A5]

#### Product data:

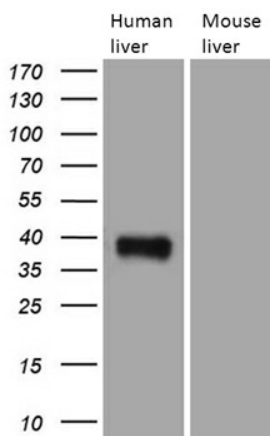
Product Type:	Primary Antibodies
Clone Name:	OTI1A5
Applications:	IHC, WB
Recommend Dilution:	WB 1:500~2000, IHC 1:500
Reactivity:	Human
Host:	Mouse
Isotype:	IgG1
Clonality:	Monoclonal
Immunogen:	Full length human recombinant protein of human TALDO1 (NP_006746) produced in HEK293T cell.
Formulation:	PBS (PH 7.3) containing 1% BSA, 50% glycerol and 0.02% sodium azide.
Concentration:	1 mg/ml
Purification:	Purified from mouse ascites fluids or tissue culture supernatant by affinity chromatography (protein A/G)
Predicted Protein Size:	37.4 kDa
Gene Name:	transaldolase 1
Database Link:	<a href="#">NP_006746 Entrez Gene 6888 Human</a>
Background:	Transaldolase 1 is a key enzyme of the nonoxidative pentose phosphate pathway providing ribose-5-phosphate for nucleic acid synthesis and NADPH for lipid biosynthesis. This pathway can also maintain glutathione at a reduced state and thus protect sulfhydryl groups and cellular integrity from oxygen radicals. The functional gene of transaldolase 1 is located on chromosome 11 and a pseudogene is identified on chromosome 1 but there are conflicting map locations. The second and third exon of this gene were developed by insertion of a retrotransposable element. This gene is thought to be involved in multiple sclerosis. [provided by RefSeq, Jul 2008]
Synonyms:	TAL; TAL-H; TALDOR; TALH
Protein Families:	Druggable Genome
Protein Pathways:	Metabolic pathways, Pentose phosphate pathway



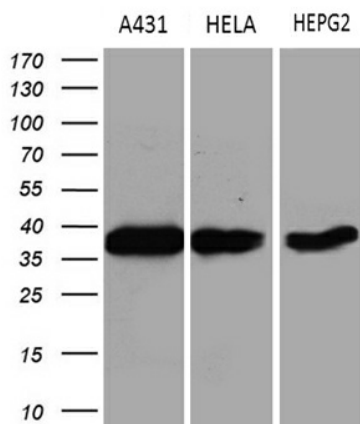
[View online »](#)

**Product images:**


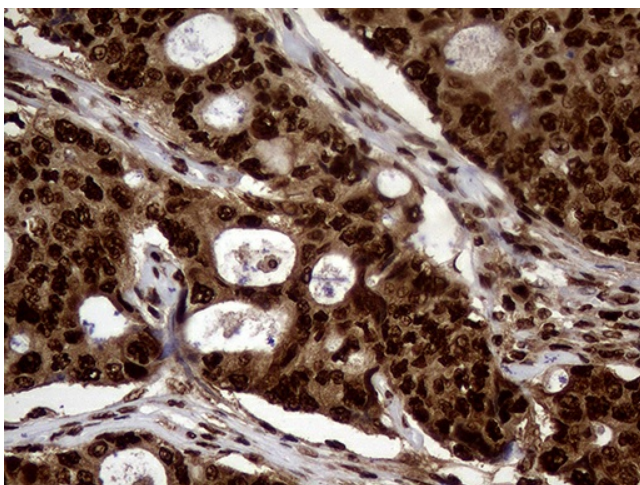
HEK293T cells were transfected with the pCMV6-ENTRY control (Left lane) or pCMV6-ENTRY TALDO1 ([RC204049], Right lane) cDNA for 48 hrs and lysed. Equivalent amounts of cell lysates (5 ug per lane) were separated by SDS-PAGE and immunoblotted with anti-TALDO1 (1:2000). Positive lysates [LY402020] (100ug) and [LC402020] (20ug) can be purchased separately from OriGene.



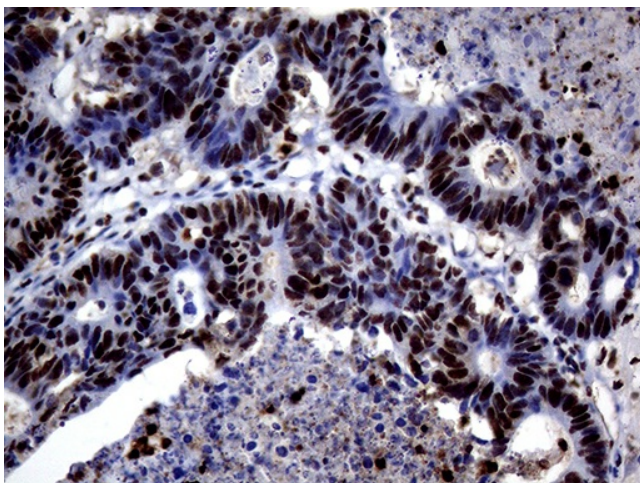
Western blot analysis of extracts (35ug) from 2 different tissue lysates by using anti-TALDO1 monoclonal antibody (1:500).



Western blot analysis of extracts (35ug) from 3 different cell lines by using anti-TALDO1 monoclonal antibody? (1:500).

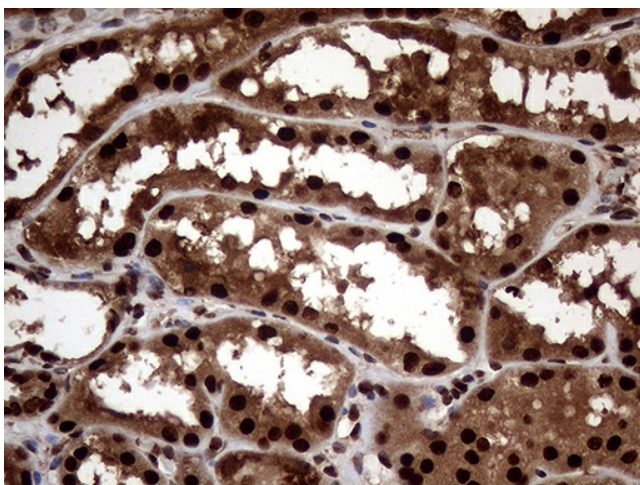


Immunohistochemical staining of paraffin-embedded Adenocarcinoma of Human breast tissue using anti-TALDO1 mouse monoclonal antibody. (Heat-induced epitope retrieval by 1mM EDTA in 10mM Tris buffer (pH8.5) at 120°C for 3min, TA809856) (1:500)

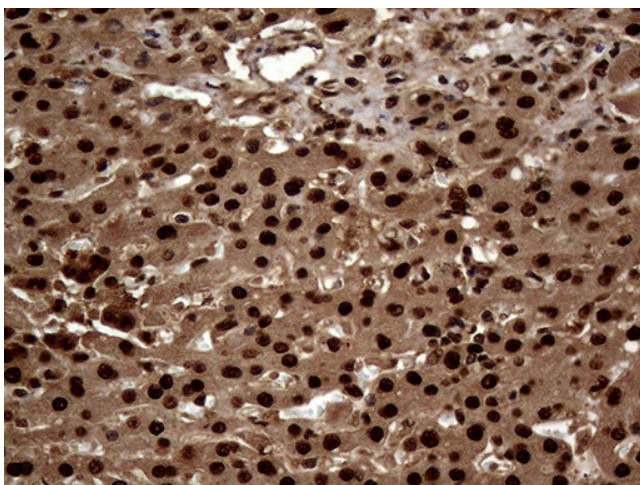


Immunohistochemical staining of paraffin-embedded Adenocarcinoma of Human colon tissue using anti-TALDO1 mouse monoclonal antibody. (Heat-induced epitope retrieval by 1mM EDTA in 10mM Tris buffer (pH8.5) at 120°C for 3min, TA809856) (1:500)

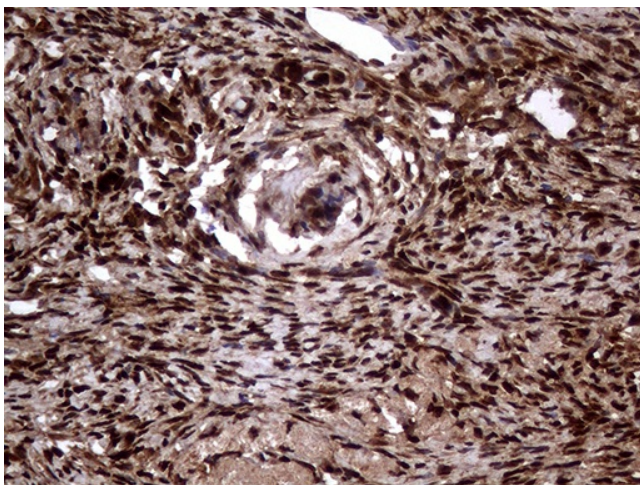




Immunohistochemical staining of paraffin-embedded Human Kidney tissue within the normal limits using anti-TALDO1 mouse monoclonal antibody. (Heat-induced epitope retrieval by 1mM EDTA in 10mM Tris buffer (pH8.5) at 120°C for 3min, TA809856) (1:500)

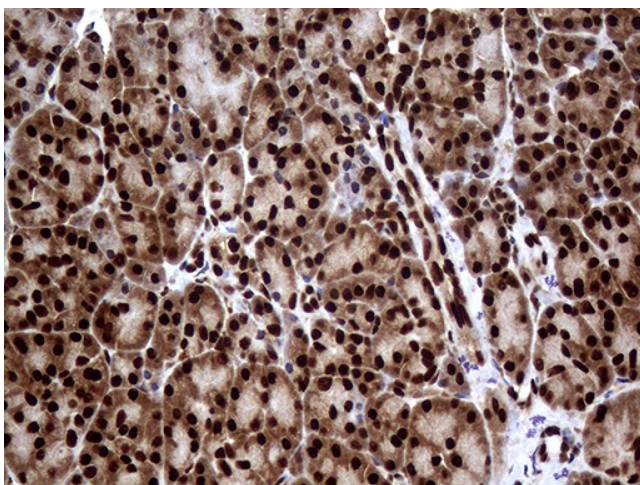


Immunohistochemical staining of paraffin-embedded Carcinoma of Human liver tissue using anti-TALDO1 mouse monoclonal antibody. (Heat-induced epitope retrieval by 1mM EDTA in 10mM Tris buffer (pH8.5) at 120°C for 3min, TA809856) (1:500)

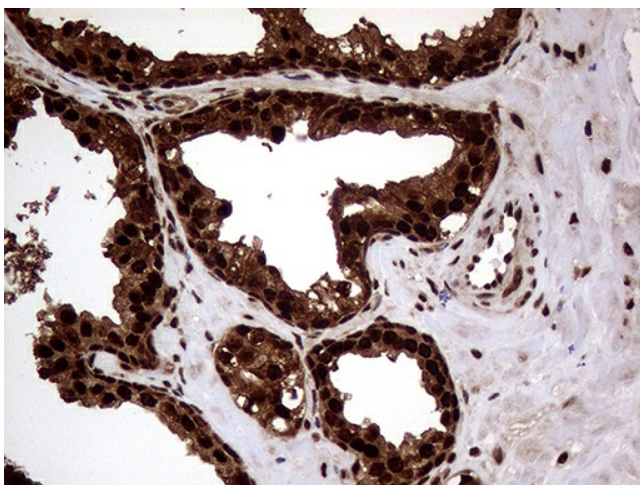


Immunohistochemical staining of paraffin-embedded Human Ovary tissue within the normal limits using anti-TALDO1 mouse monoclonal antibody. (Heat-induced epitope retrieval by 1mM EDTA in 10mM Tris buffer (pH8.5) at 120°C for 3min, TA809856) (1:500)

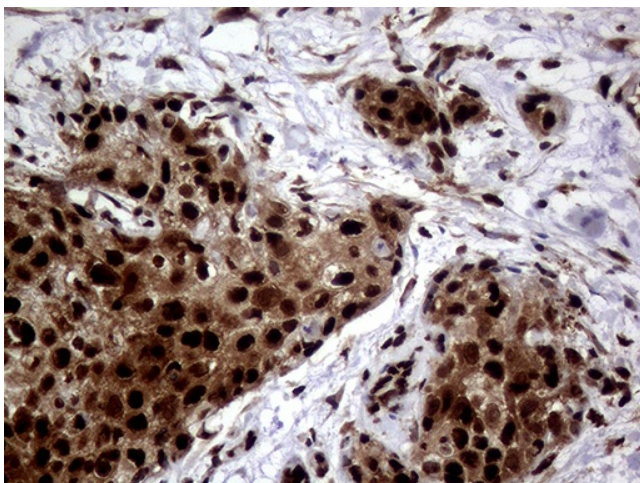




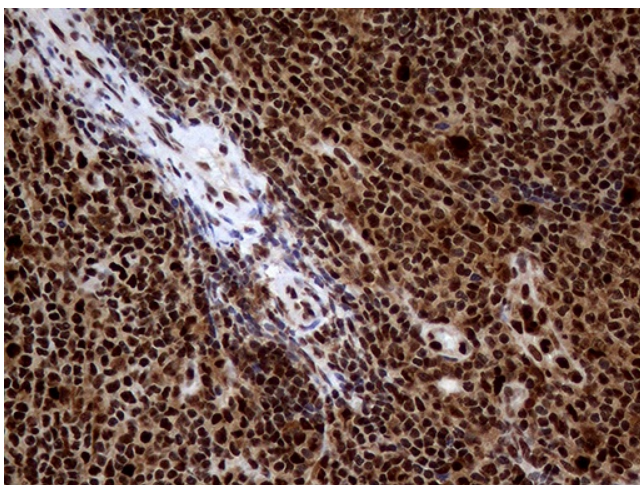
Immunohistochemical staining of paraffin-embedded Human pancreas tissue within the normal limits using anti-TALDO1 mouse monoclonal antibody. (Heat-induced epitope retrieval by 1mM EDTA in 10mM Tris buffer (pH8.5) at 120°C for 3min, TA809856) (1:500)



Immunohistochemical staining of paraffin-embedded Human prostate tissue within the normal limits using anti-TALDO1 mouse monoclonal antibody. (Heat-induced epitope retrieval by 1mM EDTA in 10mM Tris buffer (pH8.5) at 120°C for 3min, TA809856) (1:500)



Immunohistochemical staining of paraffin-embedded Carcinoma of Human bladder tissue using anti-TALDO1 mouse monoclonal antibody. (Heat-induced epitope retrieval by 1mM EDTA in 10mM Tris buffer (pH8.5) at 120°C for 3min, TA809856) (1:500)



Immunohistochemical staining of paraffin-embedded Human lymphoma tissue using anti-TALDO1 mouse monoclonal antibody. (Heat-induced epitope retrieval by 1mM EDTA in 10mM Tris buffer (pH8.5) at 120°C for 3min, TA809856) (1:500)