

## Product datasheet for TA809592

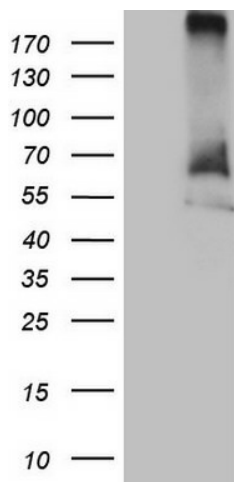
### ROR gamma (RORC) Mouse Monoclonal Antibody [Clone ID: OTI1G3]

#### Product data:

Product Type:	Primary Antibodies
Clone Name:	OTI1G3
Applications:	WB
Recommend Dilution:	WB 1:2000
Reactivity:	Human
Host:	Mouse
Isotype:	IgG1
Clonality:	Monoclonal
Immunogen:	Human recombinant protein fragment corresponding to amino acids 1-266 of human RORC (NP_005051) produced in E.coli.
Formulation:	PBS (PH 7.3) containing 1% BSA, 50% glycerol and 0.02% sodium azide.
Concentration:	1 mg/ml
Purification:	Purified from mouse ascites fluids or tissue culture supernatant by affinity chromatography (protein A/G)
Gene Name:	RAR related orphan receptor C
Database Link:	<a href="#">NP_005051 Entrez Gene 6097 Human</a>
Background:	The protein encoded by this gene is a DNA-binding transcription factor and is a member of the NR1 subfamily of nuclear hormone receptors. The specific functions of this protein are not known; however, studies of a similar gene in mice have shown that this gene may be essential for lymphoid organogenesis and may play an important regulatory role in thymopoiesis. In addition, studies in mice suggest that the protein encoded by this gene may inhibit the expression of Fas ligand and IL2. Two transcript variants encoding different isoforms have been found for this gene. [provided by RefSeq, Jul 2008]
Synonyms:	NR1F3; RORG; RZR-GAMMA; RZRG; TOR
Protein Families:	Druggable Genome, Transcription Factors



[View online »](#)

**Product images:**

HEK293T cells were transfected with the pCMV6-ENTRY control (Left lane) or pCMV6-ENTRY RORC ([RC206541], Right lane) cDNA for 48 hrs and lysed. Equivalent amounts of cell lysates (5 ug per lane) were separated by SDS-PAGE and immunoblotted with anti-RORC (1:2000). Positive lysates [LY401568] (100ug) and [LC401568] (20ug) can be purchased separately from OriGene.