

Product datasheet for TA809501

GCNF (NR6A1) Mouse Monoclonal Antibody [Clone ID: OTI6F3]

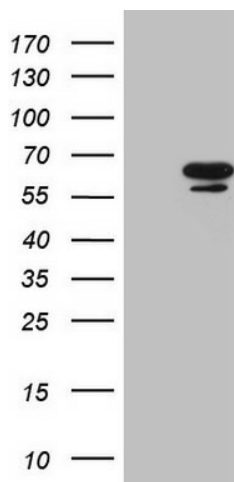
Product data:

Product Type:	Primary Antibodies
Clone Name:	OTI6F3
Applications:	WB
Recommend Dilution:	WB 1:2000
Reactivity:	Human
Host:	Mouse
Isotype:	IgG1
Clonality:	Monoclonal
Immunogen:	Human recombinant protein fragment corresponding to amino acids 1-248 of human NR6A1(NP_001480) produced in E.coli.
Formulation:	PBS (PH 7.3) containing 1% BSA, 50% glycerol and 0.02% sodium azide.
Concentration:	1 mg/ml
Purification:	Purified from mouse ascites fluids or tissue culture supernatant by affinity chromatography (protein A/G)
Gene Name:	nuclear receptor subfamily 6 group A member 1
Database Link:	NP_001480 Entrez Gene 2649 Human
Background:	This gene encodes an orphan nuclear receptor which is a member of the nuclear hormone receptor family. Its expression pattern suggests that it may be involved in neurogenesis and germ cell development. The protein can homodimerize and bind DNA, but in vivo targets have not been identified. Alternate splicing results in multiple transcript variants. [provided by RefSeq, Jun 2013]
Synonyms:	CT150; GCNF; GCNF1; hGCNF; hRTR; NR61; RTR
Protein Families:	Druggable Genome, ES Cell Differentiation/IPS, Transcription Factors



[View online »](#)

Product images:



HEK293T cells were transfected with the pCMV6-ENTRY control (Left lane) or pCMV6-ENTRY NR6A1 ([RC205484], Right lane) cDNA for 48 hrs and lysed. Equivalent amounts of cell lysates (5 ug per lane) were separated by SDS-PAGE and immunoblotted with anti-NR6A1 (1:2000). Positive lysates [LY419899] (100ug) and [LC419899] (20ug) can be purchased separately from OriGene.