

Product datasheet for TA809462

STK23 (SRPK3) Mouse Monoclonal Antibody [Clone ID: OTI6F5]

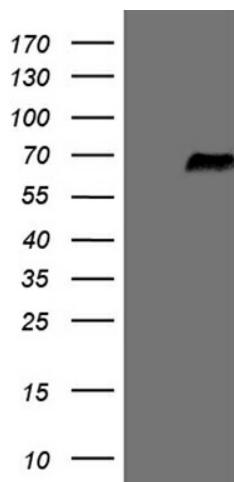
Product data:

Product Type:	Primary Antibodies
Clone Name:	OTI6F5
Applications:	WB
Recommend Dilution:	WB 1:2000
Reactivity:	Human
Host:	Mouse
Isotype:	IgG1
Clonality:	Monoclonal
Immunogen:	Human recombinant protein fragment corresponding to amino acids 245-330 of human SRPK3 (NP_055185) produced in E.coli.
Formulation:	PBS (PH 7.3) containing 1% BSA, 50% glycerol and 0.02% sodium azide.
Concentration:	1 mg/ml
Purification:	Purified from mouse ascites fluids or tissue culture supernatant by affinity chromatography (protein A/G)
Predicted Protein Size:	61.8 kDa
Gene Name:	SRSF protein kinase 3
Database Link:	NP_055185 Entrez Gene 26576 Human
Background:	This gene encodes a protein kinase similar to a protein kinase which is specific for the SR (serine/arginine-rich domain) family of splicing factors. A highly similar protein has been shown to play a role in muscle development in mice. Multiple transcript variants encoding different isoforms have been found for this gene. [provided by RefSeq, Dec 2009]
Synonyms:	MSSK-1; MSSK1; STK23
Protein Families:	Druggable Genome, Protein Kinase



[View online »](#)

Product images:



HEK293T cells were transfected with the pCMV6-ENTRY control (Left lane) or pCMV6-ENTRY SRPK3 ([RC215496], Right lane) cDNA for 48 hrs and lysed. Equivalent amounts of cell lysates (5 ug per lane) were separated by SDS-PAGE and immunoblotted with anti-SRPK3 (1:2000). Positive lysates [LY415334] (100ug) and [LC415334] (20ug) can be purchased separately from OriGene.