

Product datasheet for TA809386

Syntaxin 18 (STX18) Mouse Monoclonal Antibody [Clone ID: OTI3D7]

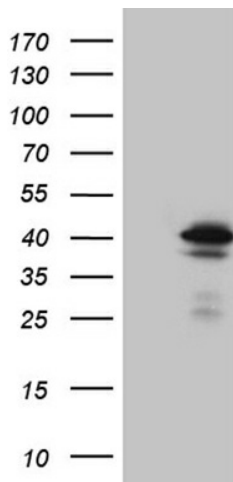
Product data:

Product Type:	Primary Antibodies
Clone Name:	OTI3D7
Applications:	IHC, WB
Recommend Dilution:	WB 1:500~2000, IHC 1:2000
Reactivity:	Human
Host:	Mouse
Isotype:	IgG1
Clonality:	Monoclonal
Immunogen:	Human recombinant protein fragment corresponding to amino acids 1-285 of human STX18(NP_058626) produced in E.coli.
Formulation:	PBS (PH 7.3) containing 1% BSA, 50% glycerol and 0.02% sodium azide.
Concentration:	1 mg/ml
Purification:	Purified from mouse ascites fluids or tissue culture supernatant by affinity chromatography (protein A/G)
Predicted Protein Size:	38.5 kDa
Gene Name:	syntaxin 18
Database Link:	NP_058626 Entrez Gene 53407 Human
Synonyms:	Ufe1
Protein Families:	Transmembrane
Protein Pathways:	SNARE interactions in vesicular transport

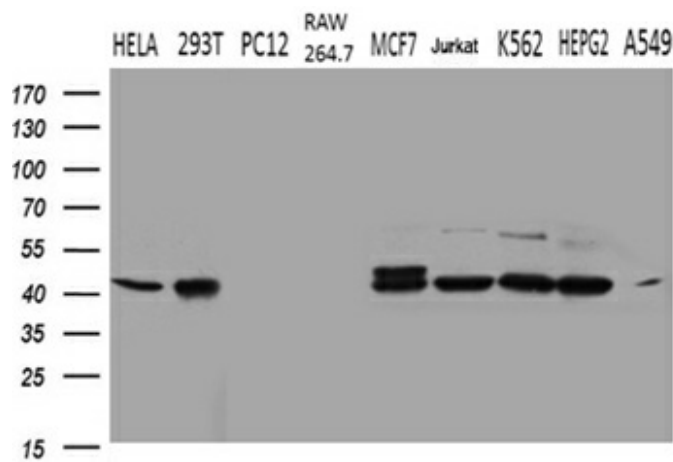


[View online »](#)

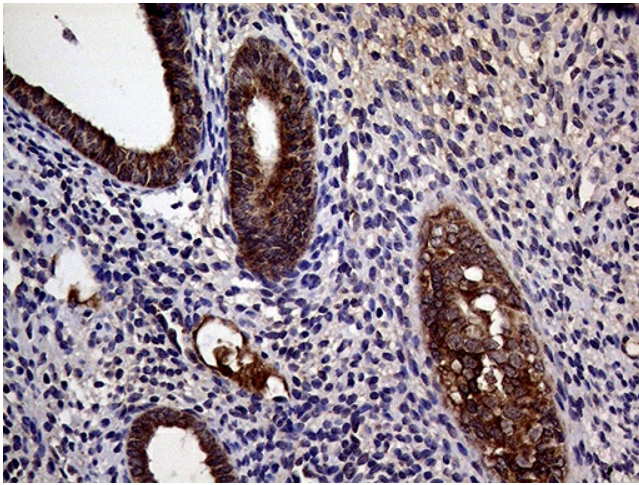
Product images:



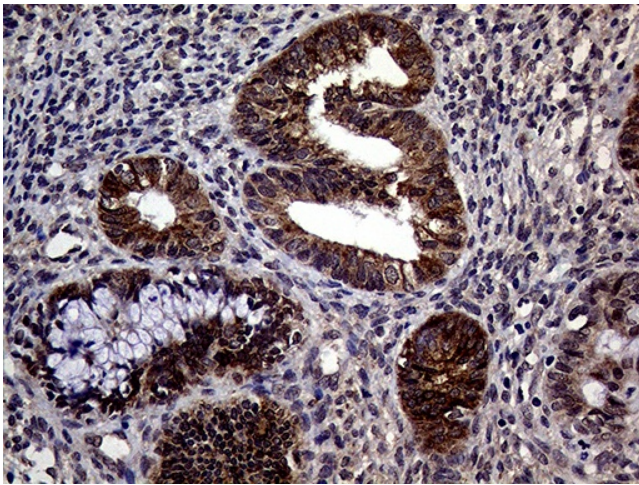
HEK293T cells were transfected with the pCMV6-ENTRY control (Left lane) or pCMV6-ENTRY STX18 ([RC201016], Right lane) cDNA for 48 hrs and lysed. Equivalent amounts of cell lysates (5 ug per lane) were separated by SDS-PAGE and immunoblotted with anti-STX18 (1:2000). Positive lysates [LY413750] (100ug) and [LC413750] (20ug) can be purchased separately from OriGene.



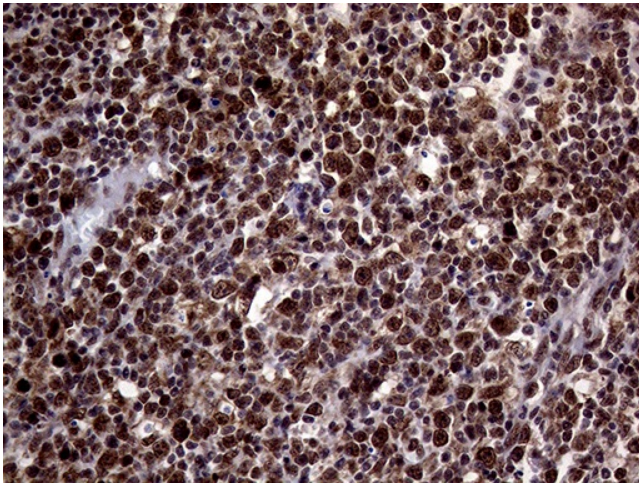
Western blot analysis of extracts (35ug) from 9 different cell lines by using anti-STX18 monoclonal antibody (1:500).



Immunohistochemical staining of paraffin-embedded Human endometrium tissue within the normal limits using anti-STX18 mouse monoclonal antibody. (Heat-induced epitope retrieval by 1mM EDTA in 10mM Tris buffer (pH8.5) at 120°C for 3min, TA809386) (1:2000)



Immunohistochemical staining of paraffin-embedded Adenocarcinoma of Human endometrium tissue using anti-STX18 mouse monoclonal antibody. (Heat-induced epitope retrieval by 1mM EDTA in 10mM Tris buffer (pH8.5) at 120°C for 3min, TA809386) (1:2000)



Immunohistochemical staining of paraffin-embedded Human lymph node tissue within the normal limits using anti-STX18 mouse monoclonal antibody. (Heat-induced epitope retrieval by 1mM EDTA in 10mM Tris buffer (pH8.5) at 120°C for 3min, TA809386) (1:2000)