

Product datasheet for TA809141

Pepsinogen II (PGC) Mouse Monoclonal Antibody [Clone ID: OT11H5]

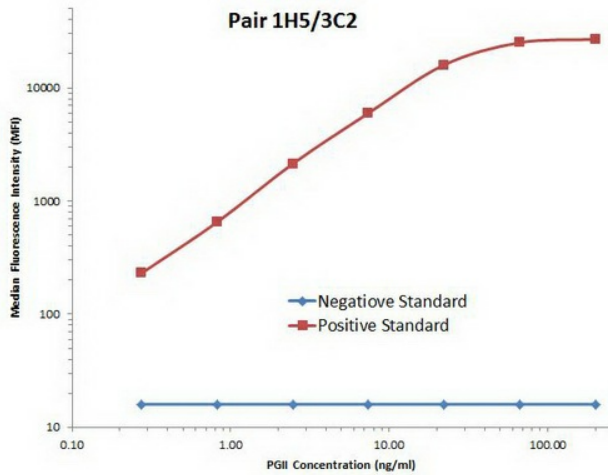
Product data:

Product Type:	Primary Antibodies
Clone Name:	OT11H5
Applications:	LMNX
Recommend Dilution:	1:100 - 1:1000
Reactivity:	Human
Host:	Mouse
Isotype:	IgG1
Clonality:	Monoclonal
Immunogen:	Native Human Pepsinogen II protein
Formulation:	PBS (PH 7.3) containing 1% BSA, 50% glycerol and 0.02% sodium azide.
Concentration:	1 mg/ml
Purification:	Purified from mouse ascites fluids or tissue culture supernatant by affinity chromatography (protein A/G)
Predicted Protein Size:	40.5 kDa
Gene Name:	progastricsin (pepsinogen C)
Database Link:	NP_002621 Entrez Gene 5225 Human
Background:	This gene encodes an aspartic proteinase that belongs to the peptidase family A1. The encoded protein is a digestive enzyme that is produced in the stomach and constitutes a major component of the gastric mucosa. This protein is also secreted into the serum. This protein is synthesized as an inactive zymogen that includes a highly basic prosegment. This enzyme is converted into its active mature form at low pH by sequential cleavage of the prosegment that is carried out by the enzyme itself. Polymorphisms in this gene are associated with susceptibility to gastric cancers. Serum levels of this enzyme are used as a biomarker for certain gastric diseases including Helicobacter pylori related gastritis. Alternate splicing results in multiple transcript variants. A pseudogene of this gene is found on chromosome 1. [provided by RefSeq, Oct 2009]
Synonyms:	PEPC; PGII
Protein Families:	Protease, Secreted Protein

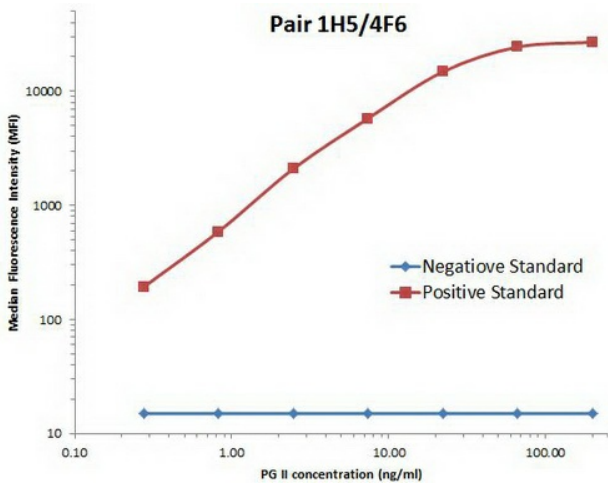


[View online »](#)

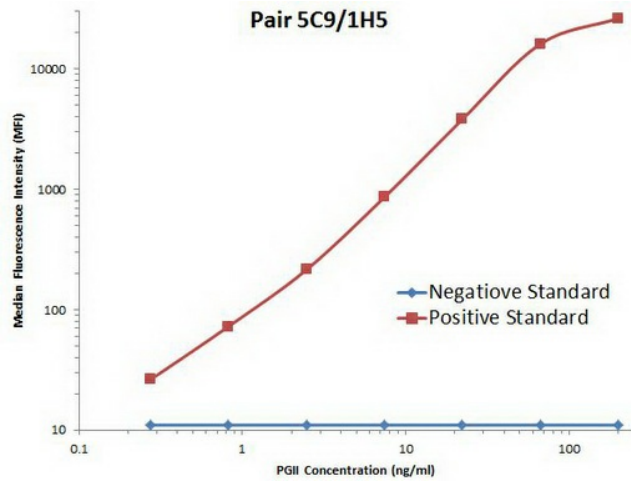
Product images:



PGII Luminex with 1H5 Capture (TA809141) and 3C2 Detection ([TA809534]) Antibodies. Substrate used: recombinant protein expressed in E.coli corresponding to amino acids 17-388 of human pepsinogen C (PG II).



PGII Luminex with 1H5 Capture (TA809141) and 4F6 Detection ([TA809595]) Antibodies. Substrate used: recombinant protein expressed in E.coli corresponding to amino acids 17-388 of human pepsinogen C (PG II).



PGII Luminex with 5C9 Capture ([TA809596]) and 1H5 Detection (TA809141) Antibodies. Substrate used: recombinant protein expressed in E.coli corresponding to amino acids 17-388 of human pepsinogen C (PG II).