

Product datasheet for TA809088

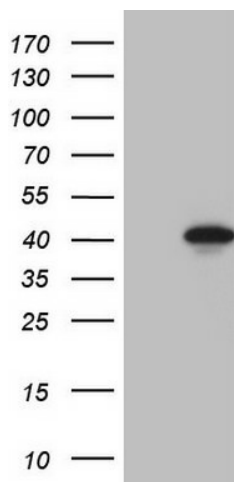
LUZP4 Mouse Monoclonal Antibody [Clone ID: OTI3A10]

Product data:

| | |
|-------------------------|--|
| Product Type: | Primary Antibodies |
| Clone Name: | OTI3A10 |
| Applications: | WB |
| Recommend Dilution: | WB 1:2000 |
| Reactivity: | Human |
| Host: | Mouse |
| Isotype: | IgG1 |
| Clonality: | Monoclonal |
| Immunogen: | Full length human recombinant protein of human LUZP4 (NP_057467) produced in E.coli. |
| Formulation: | PBS (PH 7.3) containing 1% BSA, 50% glycerol and 0.02% sodium azide. |
| Concentration: | 1 mg/ml |
| Purification: | Purified from mouse ascites fluids or tissue culture supernatant by affinity chromatography (protein A/G) |
| Predicted Protein Size: | 35.8 kDa |
| Gene Name: | leucine zipper protein 4 |
| Database Link: | NP_057467 Entrez Gene 51213 Human |
| Background: | This gene encodes a protein which contains two sets of heptad repeats in the N-terminus; the C-terminal most repeats form a leucine zipper domain. The presence of a leucine zipper domain suggests the protein may have DNA-binding activity and the protein has been shown to localize with a spliceosome protein (PMID: 12032826). [provided by RefSeq, Aug 2011] |
| Synonyms: | CT-8; CT-28; CT28; HOM-TES-85 |
| Protein Families: | Druggable Genome |



[View online »](#)

Product images:

HEK293T cells were transfected with the pCMV6-ENTRY control (Left lane) or pCMV6-ENTRY LUZP4 ([RC215624], Right lane) cDNA for 48 hrs and lysed. Equivalent amounts of cell lysates (5 ug per lane) were separated by SDS-PAGE and immunoblotted with anti-LUZP4 (1:2000). Positive lysates [LY413991] (100ug) and [LC413991] (20ug) can be purchased separately from OriGene.