

Product datasheet for TA809066

Cyclophilin F (PPIF) Mouse Monoclonal Antibody [Clone ID: OTI4D3]

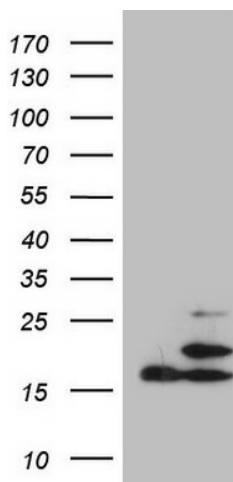
Product data:

Product Type:	Primary Antibodies
Clone Name:	OTI4D3
Applications:	WB
Recommend Dilution:	WB 1:2000
Reactivity:	Human
Host:	Mouse
Isotype:	IgG1
Clonality:	Monoclonal
Immunogen:	Full length human recombinant protein of human PPIF(NP_005720) produced in E.coli.
Formulation:	PBS (PH 7.3) containing 1% BSA, 50% glycerol and 0.02% sodium azide.
Concentration:	1 mg/ml
Purification:	Purified from mouse ascites fluids or tissue culture supernatant by affinity chromatography (protein A/G)
Predicted Protein Size:	18.8 kDa
Gene Name:	peptidylprolyl isomerase F
Database Link:	NP_005720 Entrez Gene 10105 Human
Background:	The protein encoded by this gene is a member of the peptidyl-prolyl cis-trans isomerase (PPIase) family. PPIases catalyze the cis-trans isomerization of proline imidic peptide bonds in oligopeptides and accelerate the folding of proteins. This protein is part of the mitochondrial permeability transition pore in the inner mitochondrial membrane. Activation of this pore is thought to be involved in the induction of apoptotic and necrotic cell death. [provided by RefSeq, Jul 2008]
Synonyms:	Cyp-D; CyP-M; CYP3; CypD

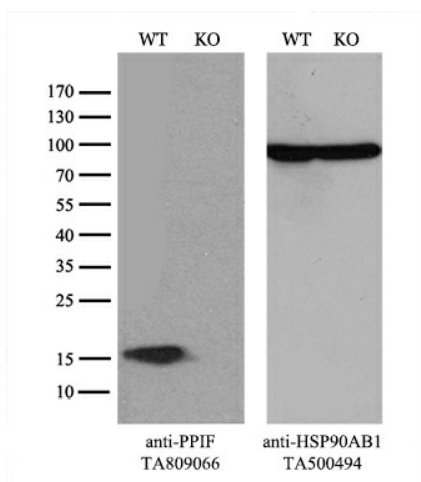


[View online »](#)

Product images:



HEK293T cells were transfected with the pCMV6-ENTRY control (Left lane) or pCMV6-ENTRY PPIF ([RC223397], Right lane) cDNA for 48 hrs and lysed. Equivalent amounts of cell lysates (5 ug per lane) were separated by SDS-PAGE and immunoblotted with anti-PPIF (1:2000). Positive lysates [LY417109] (100ug) and [LC417109] (20ug) can be purchased separately from OriGene.



Equivalent amounts of cell lysates (10 ug per lane) of wild-type 293T cells (WT, Cat# LC810293T) and PPIF-Knockout 293T cells (KO, Cat# [LC811541]) were separated by SDS-PAGE and immunoblotted with anti-PPIF monoclonal antibody TA809066, (1:500). Then the blotted membrane was stripped and reprobed with anti-HSP90AB1 antibody ([TA500494]) as a loading control.