

Product datasheet for TA809056

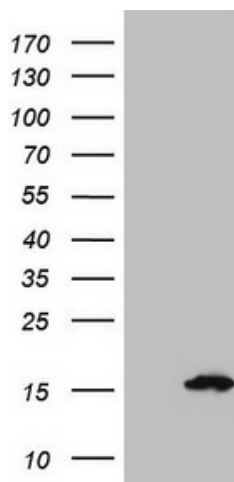
S100A5 Mouse Monoclonal Antibody [Clone ID: OTI4C9]

Product data:

Product Type:	Primary Antibodies
Clone Name:	OTI4C9
Applications:	WB
Recommend Dilution:	WB 1:2000
Reactivity:	Human
Host:	Mouse
Isotype:	IgG1
Clonality:	Monoclonal
Immunogen:	Full length human recombinant protein of human S100A5 (NP_002953) produced in 293T cell.
Formulation:	PBS (PH 7.3) containing 1% BSA, 50% glycerol and 0.02% sodium azide.
Concentration:	1 mg/ml
Purification:	Purified from mouse ascites fluids or tissue culture supernatant by affinity chromatography (protein A/G)
Predicted Protein Size:	12.6 kDa
Gene Name:	S100 calcium binding protein A5
Database Link:	NP_002953 Entrez Gene 6276 Human
Background:	The protein encoded by this gene is a member of the S100 family of proteins containing 2 EF-hand calcium-binding motifs. S100 proteins are localized in the cytoplasm and/or nucleus of a wide range of cells, and involved in the regulation of a number of cellular processes such as cell cycle progression and differentiation. S100 genes include at least 13 members which are located as a cluster on chromosome 1q21. This protein has a Ca ²⁺ affinity 20- to 100-fold higher than the other S100 proteins studied under identical conditions. This protein also binds Zn ²⁺ and Cu ²⁺ , and Cu ²⁺ strongly which impairs the binding of Ca ²⁺ . This protein is expressed in very restricted regions of the adult brain. [provided by RefSeq, Jul 2008]
Synonyms:	S100D



[View online »](#)

Product images:

HEK293T cells were transfected with the pCMV6-ENTRY control (Left lane) or pCMV6-ENTRY S100A5 ([RC210891], Right lane) cDNA for 48 hrs and lysed. Equivalent amounts of cell lysates (5 ug per lane) were separated by SDS-PAGE and immunoblotted with anti-S100A5 (1:2000). Positive lysates [LY418992] (100ug) and [LC418992] (20ug) can be purchased separately from OriGene.