

## Product datasheet for **TA808876**

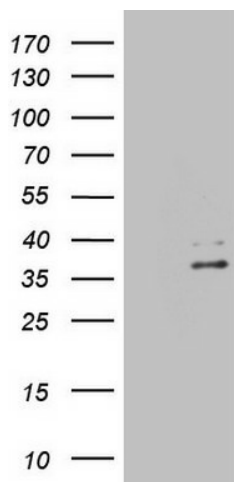
### **EBLN2 Mouse Monoclonal Antibody [Clone ID: OT11B5]**

#### **Product data:**

<b>Product Type:</b>	Primary Antibodies
<b>Clone Name:</b>	OT11B5
<b>Applications:</b>	WB
<b>Recommend Dilution:</b>	WB 1:2000
<b>Reactivity:</b>	Human
<b>Host:</b>	Mouse
<b>Isotype:</b>	IgG1
<b>Clonality:</b>	Monoclonal
<b>Immunogen:</b>	Full length human recombinant protein of human EBLN2(NP_060499) produced in E.coli.
<b>Formulation:</b>	PBS (PH 7.3) containing 1% BSA, 50% glycerol and 0.02% sodium azide.
<b>Concentration:</b>	1 mg/ml
<b>Purification:</b>	Purified from mouse ascites fluids or tissue culture supernatant by affinity chromatography (protein A/G)
<b>Predicted Protein Size:</b>	30.3 kDa
<b>Gene Name:</b>	endogenous Bornavirus-like nucleoprotein 2
<b>Database Link:</b>	<a href="#">NP_060499</a> <a href="#">Entrez Gene 55096</a> <a href="#">Human</a>
<b>Background:</b>	May act as an RNA-binding protein. The C-terminal region is highly homologous to the bornavirus nucleocapsid N protein that binds viral RNA and oligomerizes. The viral protein also possesses a nuclear import and a nuclear export signal. These 2 signals seem absent in EBLN-2 supporting an unrelated function in Human. [UniProtKB/Swiss-Prot Function]
<b>Synonyms:</b>	EBLN-2



[View online »](#)

**Product images:**

HEK293T cells were transfected with the pCMV6-ENTRY control (Left lane) or pCMV6-ENTRY EBLN2 ([RC208579], Right lane) cDNA for 48 hrs and lysed. Equivalent amounts of cell lysates (5 ug per lane) were separated by SDS-PAGE and immunoblotted with anti-EBLN2 (1:2000). Positive lysates [LY413369] (100ug) and [LC413369] (20ug) can be purchased separately from OriGene.