

## Product datasheet for **TA808864**

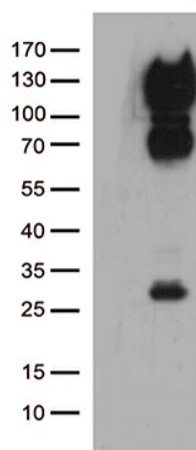
### CD34 Mouse Monoclonal Antibody [Clone ID: OTI12F2]

#### Product data:

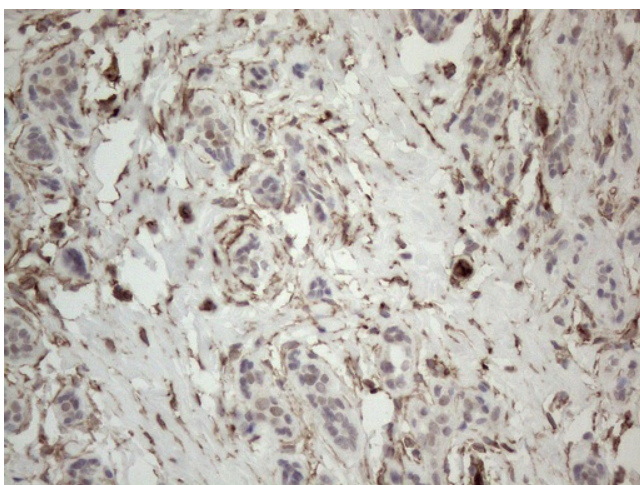
Product Type:	Primary Antibodies
Clone Name:	OTI12F2
Applications:	IHC, WB
Recommend Dilution:	IHC 1:150
Reactivity:	Human
Host:	Mouse
Isotype:	IgG2a
Clonality:	Monoclonal
Immunogen:	Human recombinant protein fragment corresponding to amino acids 312-385 of human CD34(NP_001020280) produced in E.coli.
Formulation:	PBS (PH 7.3) containing 1% BSA, 50% glycerol and 0.02% sodium azide.
Concentration:	1 mg/ml
Purification:	Purified from mouse ascites fluids or tissue culture supernatant by affinity chromatography (protein A/G)
Gene Name:	CD34 molecule
Database Link:	<a href="#">NP_001020280 Entrez Gene 947 Human</a>
Background:	The protein encoded by this gene may play a role in the attachment of stem cells to the bone marrow extracellular matrix or to stromal cells. This single-pass membrane protein is highly glycosylated and phosphorylated by protein kinase C. Two transcript variants encoding different isoforms have been found for this gene. [provided by RefSeq, Aug 2011]
Synonyms:	CD34 antigen; CD34 molecule; hematopoietic progenitor cell antigen CD34; OTTHUMP00000034733; OTTHUMP00000034734
Protein Families:	Adult stem cells, Cancer stem cells, Druggable Genome, Embryonic stem cells, ES Cell Differentiation/IPS, Transmembrane
Protein Pathways:	Cell adhesion molecules (CAMs), Hematopoietic cell lineage



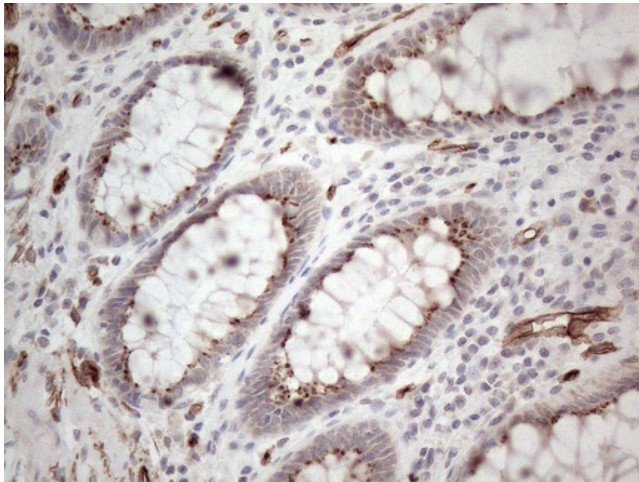
[View online »](#)

**Product images:**

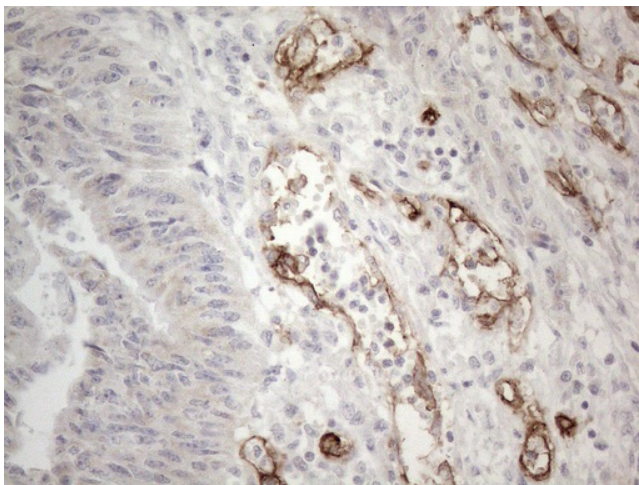
HEK293T cells were transfected with the pCMV6-ENTRY control (Left lane) or pCMV6-ENTRY CD34 ([RC204446], Right lane) cDNA for 48 hrs and lysed. Equivalent amounts of cell lysates (5 ug per lane) were separated by SDS-PAGE and immunoblotted with anti-CD34. Positive lysates [LY422593] (100ug) and [LC422593] (20ug) can be purchased separately from OriGene.



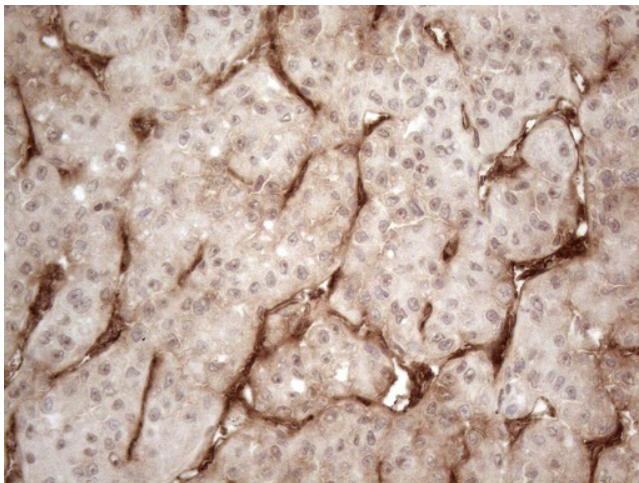
Immunohistochemical staining of paraffin-embedded Human breast tissue within the normal limits using anti-CD34 mouse monoclonal antibody. (Heat-induced epitope retrieval by 1mM EDTA in 10mM Tris buffer (pH8.5) at 120°C for 3min, TA808864) (1:150)



Immunohistochemical staining of paraffin-embedded Human colon tissue within the normal limits using anti-CD34 mouse monoclonal antibody. (Heat-induced epitope retrieval by 1mM EDTA in 10mM Tris buffer (pH8.5) at 120°C for 3min, TA808864) (1:150)

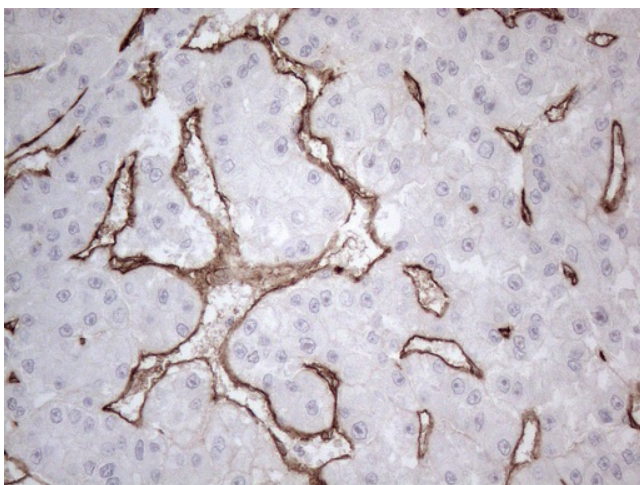


Immunohistochemical staining of paraffin-embedded Adenocarcinoma of Human colon tissue using anti-CD34 mouse monoclonal antibody. (Heat-induced epitope retrieval by 1mM EDTA in 10mM Tris buffer (pH8.5) at 120°C for 3min, TA808864) (1:150)

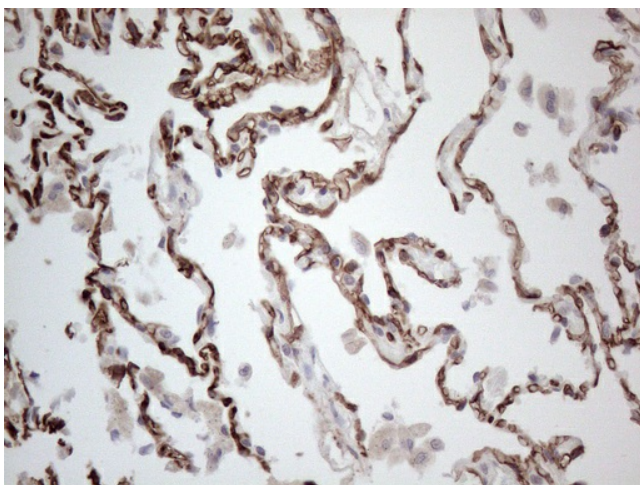


Immunohistochemical staining of paraffin-embedded Human liver tissue within the normal limits using anti-CD34 mouse monoclonal antibody. (Heat-induced epitope retrieval by 1mM EDTA in 10mM Tris buffer (pH8.5) at 120°C for 3min, TA808864) (1:150)

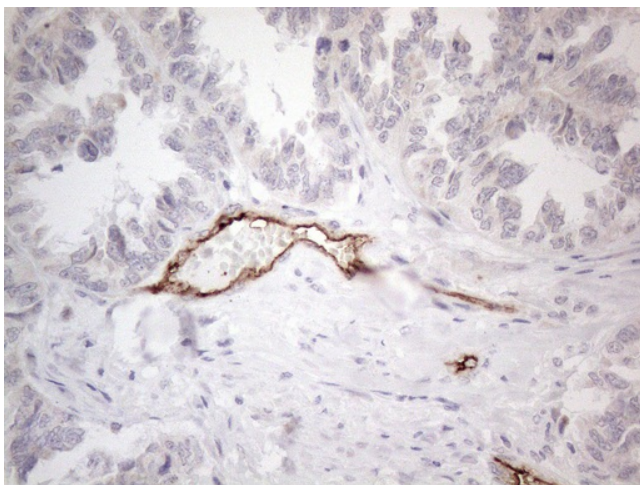




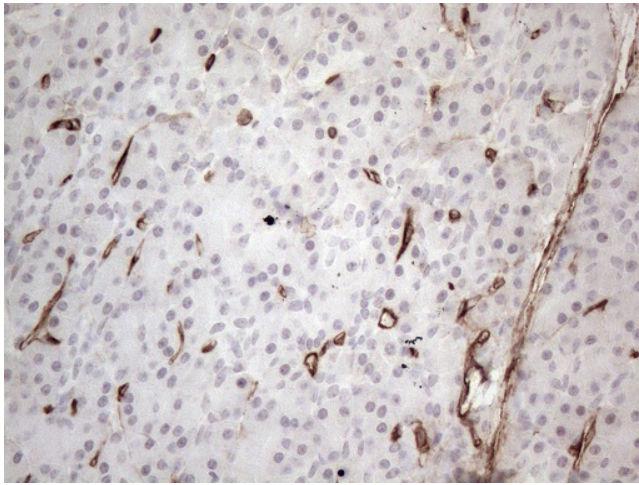
Immunohistochemical staining of paraffin-embedded Carcinoma of Human liver tissue using anti-CD34 mouse monoclonal antibody. (Heat-induced epitope retrieval by 1mM EDTA in 10mM Tris buffer (pH8.5) at 120°C for 3min, TA808864) (1:150)



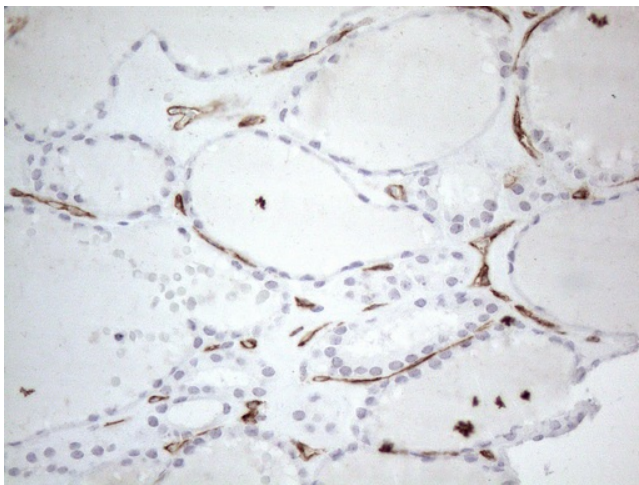
Immunohistochemical staining of paraffin-embedded Human lung tissue within the normal limits using anti-CD34 mouse monoclonal antibody. (Heat-induced epitope retrieval by 1mM EDTA in 10mM Tris buffer (pH8.5) at 120°C for 3min, TA808864) (1:150)



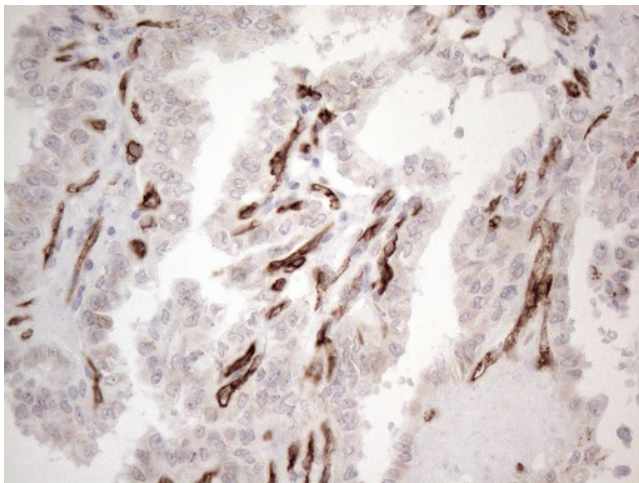
Immunohistochemical staining of paraffin-embedded Adenocarcinoma of Human ovary tissue using anti-CD34 mouse monoclonal antibody. (Heat-induced epitope retrieval by 1mM EDTA in 10mM Tris buffer (pH8.5) at 120°C for 3min, TA808864) (1:150)



Immunohistochemical staining of paraffin-embedded Human pancreas tissue within the normal limits using anti-CD34 mouse monoclonal antibody. (Heat-induced epitope retrieval by 1mM EDTA in 10mM Tris buffer (pH8.5) at 120°C for 3min, TA808864) (1:150)

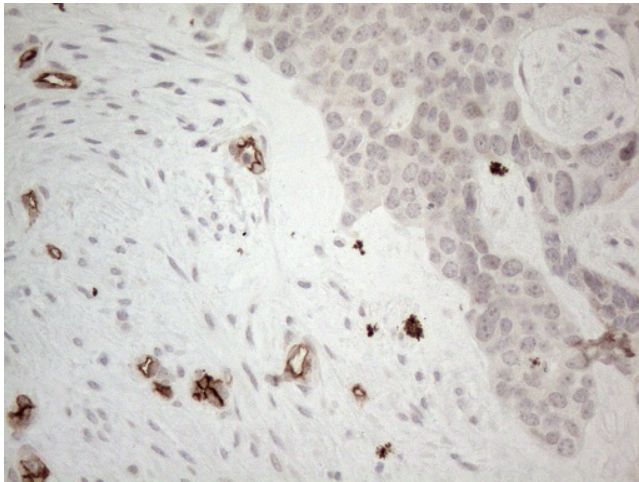


Immunohistochemical staining of paraffin-embedded Human thyroid tissue within the normal limits using anti-CD34 mouse monoclonal antibody. (Heat-induced epitope retrieval by 1mM EDTA in 10mM Tris buffer (pH8.5) at 120°C for 3min, TA808864) (1:150)

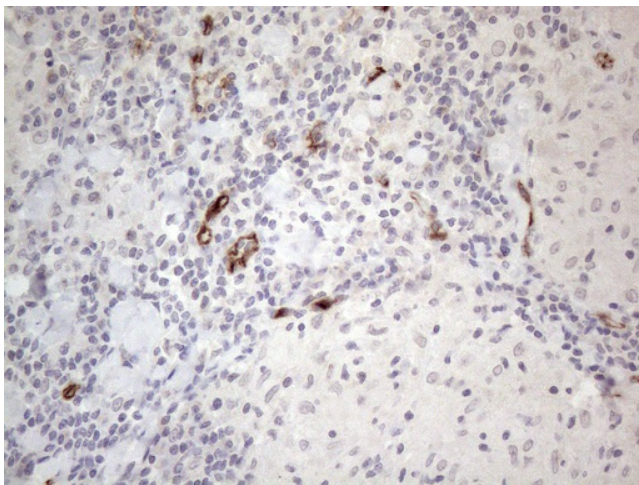


Immunohistochemical staining of paraffin-embedded Carcinoma of Human thyroid tissue using anti-CD34 mouse monoclonal antibody. (Heat-induced epitope retrieval by 1mM EDTA in 10mM Tris buffer (pH8.5) at 120°C for 3min, TA808864) (1:150)

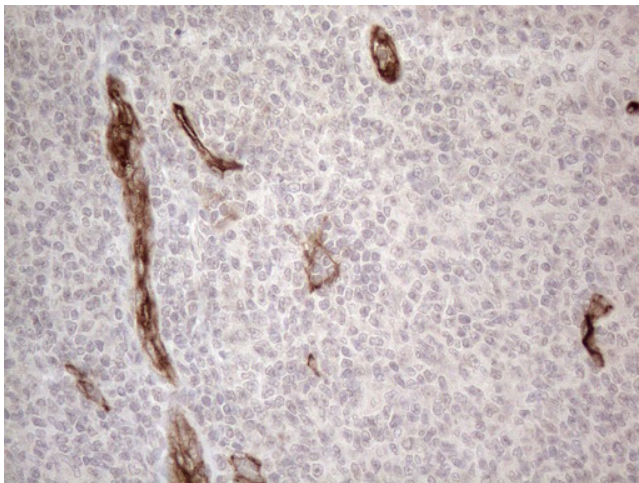




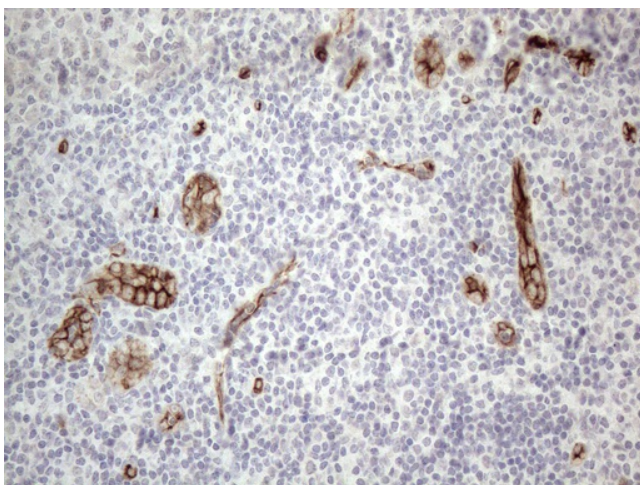
Immunohistochemical staining of paraffin-embedded Adenocarcinoma of Human endometrium tissue using anti-CD34 mouse monoclonal antibody. (Heat-induced epitope retrieval by 1mM EDTA in 10mM Tris buffer (pH8.5) at 120°C for 3min, TA808864) (1:150)



Immunohistochemical staining of paraffin-embedded Human lymph node tissue within the normal limits using anti-CD34 mouse monoclonal antibody. (Heat-induced epitope retrieval by 1mM EDTA in 10mM Tris buffer (pH8.5) at 120°C for 3min, TA808864) (1:150)



Immunohistochemical staining of paraffin-embedded Human lymphoma tissue using anti-CD34 mouse monoclonal antibody. (Heat-induced epitope retrieval by 1mM EDTA in 10mM Tris buffer (pH8.5) at 120°C for 3min, TA808864) (1:150)



Immunohistochemical staining of paraffin-embedded Human tonsil within the normal limits using anti-CD34 mouse monoclonal antibody. (Heat-induced epitope retrieval by 1mM EDTA in 10mM Tris buffer (pH8.5) at 120°C for 3min, TA808864) (1:150)