

Product datasheet for TA808757

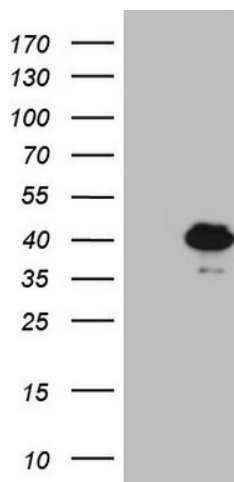
POU4F3 Mouse Monoclonal Antibody [Clone ID: OTI2F11]

Product data:

Product Type:	Primary Antibodies
Clone Name:	OTI2F11
Applications:	WB
Recommend Dilution:	WB 1:2000
Reactivity:	Human
Host:	Mouse
Isotype:	IgG1
Clonality:	Monoclonal
Immunogen:	Human recombinant protein fragment corresponding to amino acids 179-338 of human POU4F3(NP_002691) produced in E.coli.
Formulation:	PBS (PH 7.3) containing 1% BSA, 50% glycerol and 0.02% sodium azide.
Concentration:	1 mg/ml
Purification:	Purified from mouse ascites fluids or tissue culture supernatant by affinity chromatography (protein A/G)
Predicted Protein Size:	36.9 kDa
Gene Name:	POU class 4 homeobox 3
Database Link:	NP_002691 Entrez Gene 5459 Human
Background:	This gene encodes a member of the POU-domain family of transcription factors. POU-domain proteins have been observed to play important roles in control of cell identity in several systems. This protein is found in the retina and may play a role in determining or maintaining the identities of a small subset of visual system neurons. Defects in this gene are the cause of non-syndromic sensorineural deafness autosomal dominant type 15. [provided by RefSeq, Mar 2009]
Synonyms:	BRN3C; DFNA15
Protein Families:	Transcription Factors



[View online »](#)

Product images:

HEK293T cells were transfected with the pCMV6-ENTRY control (Left lane) or pCMV6-ENTRY POU4F3 ([RC211206], Right lane) cDNA for 48 hrs and lysed. Equivalent amounts of cell lysates (5 ug per lane) were separated by SDS-PAGE and immunoblotted with anti-POU4F3 (1:2000). Positive lysates [LY400949] (100ug) and [LC400949] (20ug) can be purchased separately from OriGene.