

Product datasheet for **TA808735**

C19orf80 (ANGPTL8) Mouse Monoclonal Antibody [Clone ID: OTI5E2]

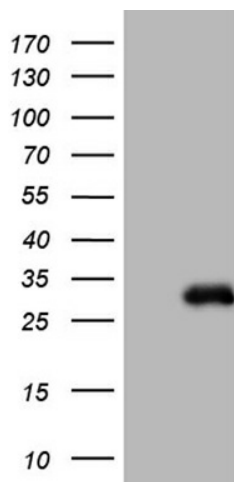
Product data:

Product Type:	Primary Antibodies
Clone Name:	OTI5E2
Applications:	IHC, WB
Recommend Dilution:	WB 1:2000, IHC 1:2000
Reactivity:	Human
Host:	Mouse
Isotype:	IgG2a
Clonality:	Monoclonal
Immunogen:	Human recombinant protein fragment corresponding to amino acids 22-198 of human C19ORF80(NP_061157) produced in E.coli.
Formulation:	PBS (PH 7.3) containing 1% BSA, 50% glycerol and 0.02% sodium azide.
Concentration:	1 mg/ml
Purification:	Purified from mouse ascites fluids or tissue culture supernatant by affinity chromatography (protein A/G)
Gene Name:	angiopoietin like 8
Database Link:	NP_061157 Entrez Gene 55908 Human
Synonyms:	C19orf80; PRO1185; PVPA599; RIFL; TD26

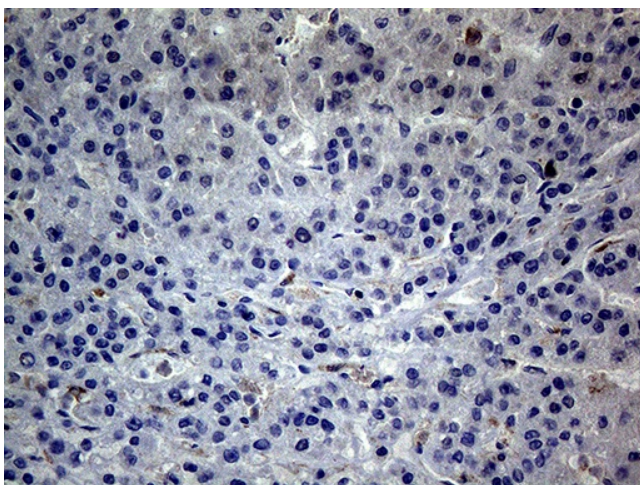


[View online »](#)

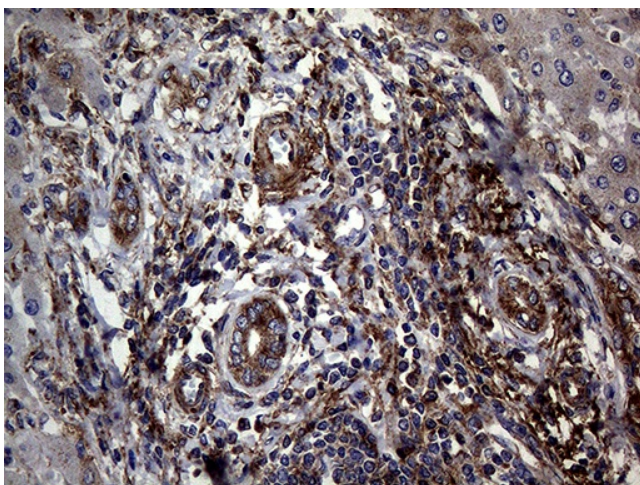
Product images:



HEK293T cells were transfected with the pCMV6-ENTRY control (Left lane) or pCMV6-ENTRY C19ORF80 ([RC218000], Right lane) cDNA for 48 hrs and lysed. Equivalent amounts of cell lysates (5 ug per lane) were separated by SDS-PAGE and immunoblotted with anti-C19ORF80 (1:2000).



Immunohistochemical staining of paraffin-embedded Human liver tissue within the normal limits using anti-C19ORF80 mouse monoclonal antibody. This figure shows negative staining. (Heat-induced epitope retrieval by 1mM EDTA in 10mM Tris buffer (pH8.5) at 120°C for 3min, TA808735) (1:2000)



Immunohistochemical staining of paraffin-embedded Carcinoma of Human liver tissue using anti-C19ORF80 mouse monoclonal antibody. (Heat-induced epitope retrieval by 1mM EDTA in 10mM Tris buffer (pH8.5) at 120°C for 3min, TA808735) (1:2000)