

## Product datasheet for **TA808669**

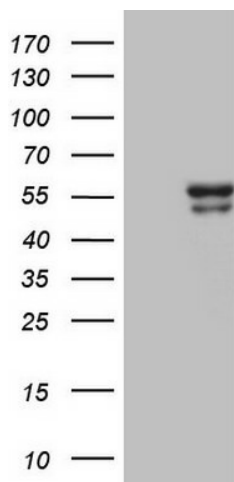
### **BTBD3 Mouse Monoclonal Antibody [Clone ID: OTI13F6]**

#### **Product data:**

|                                |   |
|--------------------------------|---|
| <b>Product Type:</b>           | Primary Antibodies  |
| <b>Clone Name:</b>             | OTI13F6   |
| <b>Applications:</b>           | WB  |
| <b>Recommend Dilution:</b>     | WB 1:2000   |
| <b>Reactivity:</b>             | Human   |
| <b>Host:</b>                   | Mouse   |
| <b>Isotype:</b>                | IgG1  |
| <b>Clonality:</b>              | Monoclonal  |
| <b>Immunogen:</b>              | Full length human recombinant protein of human BTBD3 (NP_852108) produced in E.coli.  |
| <b>Formulation:</b>            | PBS (PH 7.3) containing 1% BSA, 50% glycerol and 0.02% sodium azide.  |
| <b>Concentration:</b>          | 1 mg/ml   |
| <b>Purification:</b>           | Purified from mouse ascites fluids or tissue culture supernatant by affinity chromatography (protein A/G)   |
| <b>Predicted Protein Size:</b> | 51.3 kDa  |
| <b>Gene Name:</b>              | BTB domain containing 3   |
| <b>Database Link:</b>          | <a href="#">NP_852108</a> <a href="#">Entrez Gene 22903</a> <a href="#">Human</a>   |
| <b>Background:</b>             | Acts as a key regulator of dendritic field orientation during development of sensory cortex. Also directs dendrites toward active axon terminals when ectopically expressed.<br>[UniProtKB/Swiss-Prot Function] |
| <b>Synonyms:</b>               | dj742j24.1  |



[View online »](#)

**Product images:**

HEK293T cells were transfected with the pCMV6-ENTRY control (Left lane) or pCMV6-ENTRY BTBD3 ([RC223754], Right lane) cDNA for 48 hrs and lysed. Equivalent amounts of cell lysates (5 ug per lane) were separated by SDS-PAGE and immunoblotted with anti-BTBD3 (1:2000). Positive lysates [LY405759] (100ug) and [LC405759] (20ug) can be purchased separately from OriGene.