

Product datasheet for **TA808500**

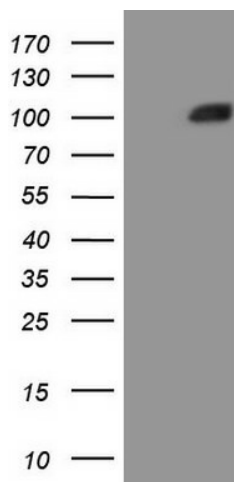
MST1 Mouse Monoclonal Antibody [Clone ID: OTI1A10]

Product data:

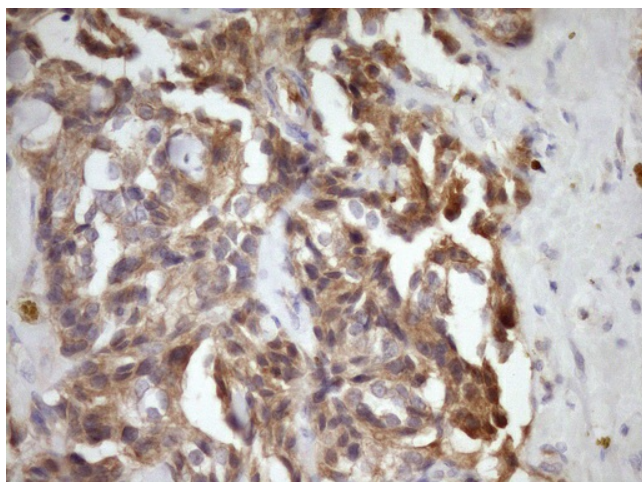
Product Type:	Primary Antibodies
Clone Name:	OTI1A10
Applications:	IHC, WB
Recommend Dilution:	WB 1:2000, IHC 1:150
Reactivity:	Human
Host:	Mouse
Isotype:	IgG1
Clonality:	Monoclonal
Immunogen:	Human recombinant protein fragment corresponding to amino acids 194-462 of human MST1(NP_066278) produced in E.coli.
Formulation:	PBS (PH 7.3) containing 1% BSA, 50% glycerol and 0.02% sodium azide.
Concentration:	1 mg/ml
Purification:	Purified from mouse ascites fluids or tissue culture supernatant by affinity chromatography (protein A/G)
Gene Name:	macrophage stimulating 1
Database Link:	NP_066278 Entrez Gene 4485 Human
Synonyms:	D3F15S2; DNF15S2; HGFL; MSP; NF15S2
Protein Families:	Druggable Genome



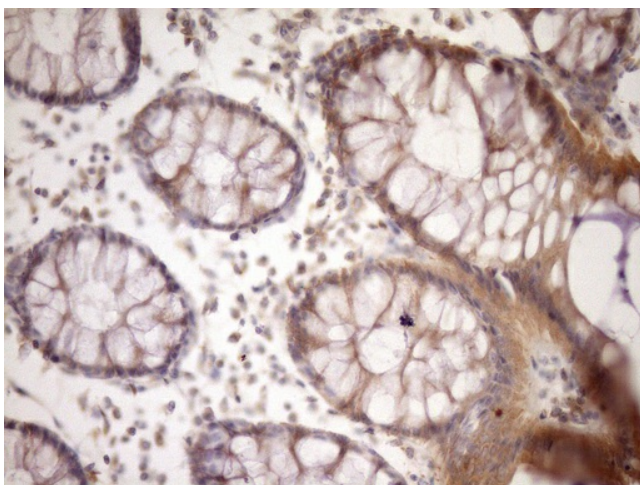
[View online »](#)

Product images:

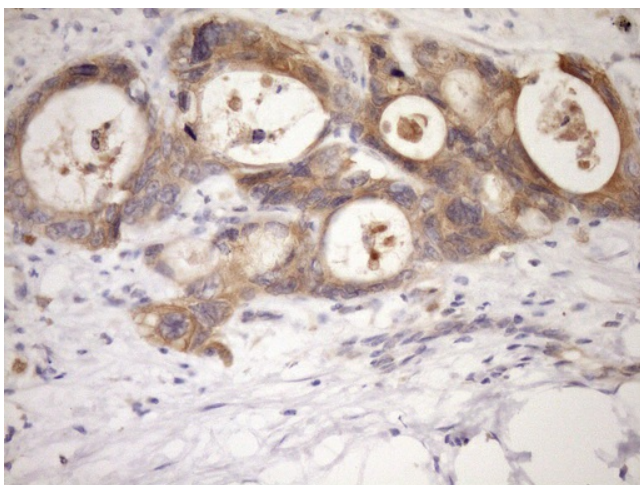
HEK293T cells were transfected with the pCMV6-ENTRY control (Left lane) or pCMV6-ENTRY MST1 ([RC229352], Right lane) cDNA for 48 hrs and lysed. Equivalent amounts of cell lysates (5 ug per lane) were separated by SDS-PAGE and immunoblotted with anti-MST1 (1:2000). Positive lysates [LY432366] (100ug) and [LC432366] (20ug) can be purchased separately from OriGene.



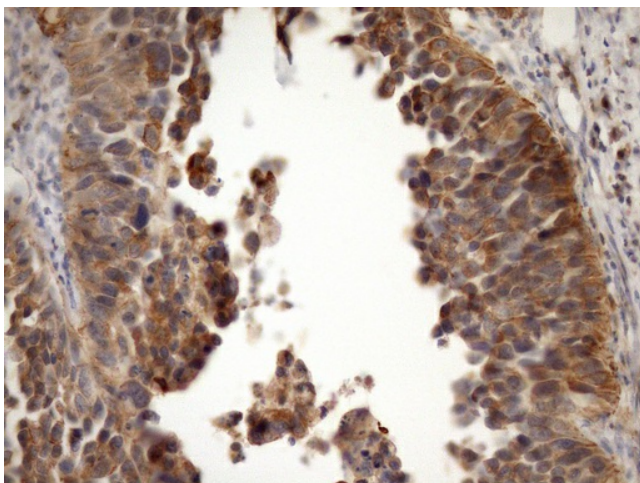
Immunohistochemical staining of paraffin-embedded Adenocarcinoma of Human breast tissue using anti-MST1 mouse monoclonal antibody. (Heat-induced epitope retrieval by Tris-EDTA, pH8.0, TA808500) (1:150)



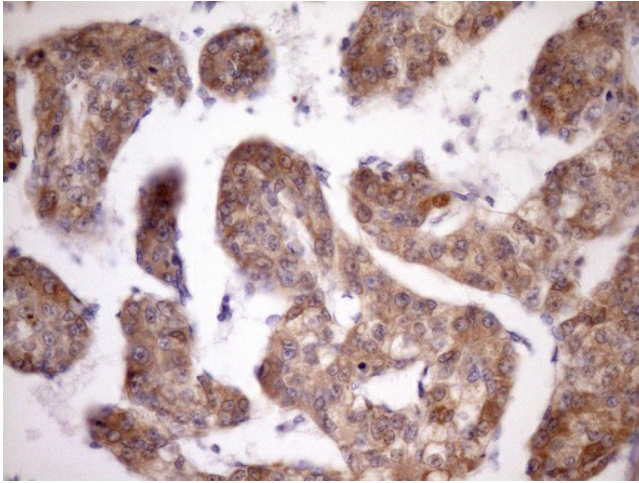
Immunohistochemical staining of paraffin-embedded Human colon tissue within the normal limits using anti-MST1 mouse monoclonal antibody. (Heat-induced epitope retrieval by Tris-EDTA, pH8.0, TA808500) (1:150)



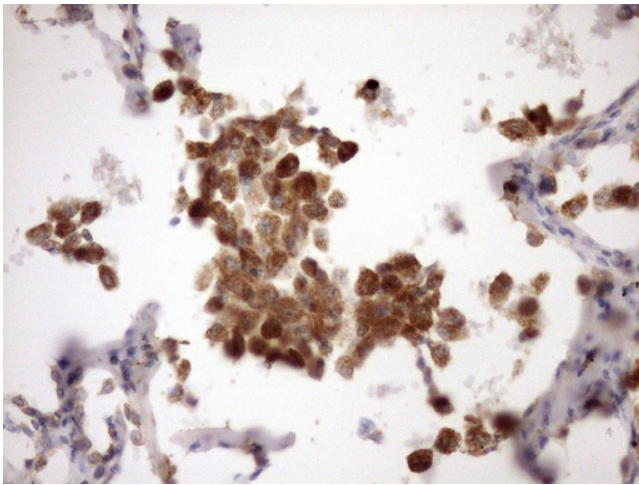
Immunohistochemical staining of paraffin-embedded Adenocarcinoma of Human colon tissue using anti-MST1 mouse monoclonal antibody. (Heat-induced epitope retrieval by Tris-EDTA, pH8.0, TA808500) (1:150)



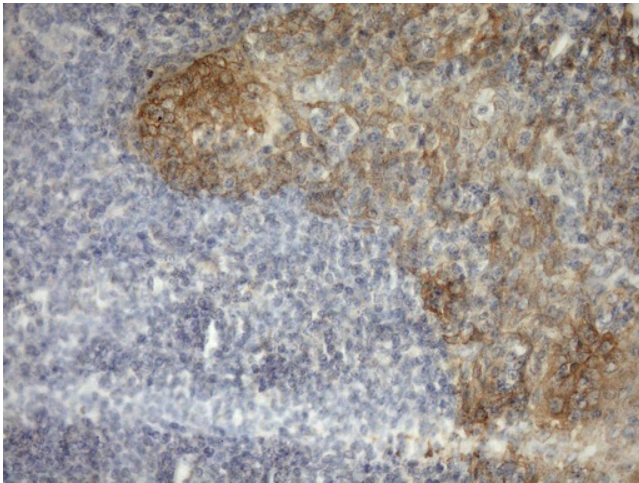
Immunohistochemical staining of paraffin-embedded Carcinoma of Human kidney tissue using anti-MST1 mouse monoclonal antibody. (Heat-induced epitope retrieval by Tris-EDTA, pH8.0, TA808500) (1:150)



Immunohistochemical staining of paraffin-embedded Carcinoma of Human liver tissue using anti-MST1 mouse monoclonal antibody. (Heat-induced epitope retrieval by Tris-EDTA, pH8.0, TA808500) (1:150)



Immunohistochemical staining of paraffin-embedded Carcinoma of Human lung tissue using anti-MST1 mouse monoclonal antibody. (Heat-induced epitope retrieval by Tris-EDTA, pH8.0, TA808500) (1:150)



Immunohistochemical staining of paraffin-embedded Human tonsil within the normal limits using anti-MST1 mouse monoclonal antibody. (Heat-induced epitope retrieval by Tris-EDTA, pH8.0, TA808500) (1:150)