

Product datasheet for TA808402

ASB8 Mouse Monoclonal Antibody [Clone ID: OTI2D7]

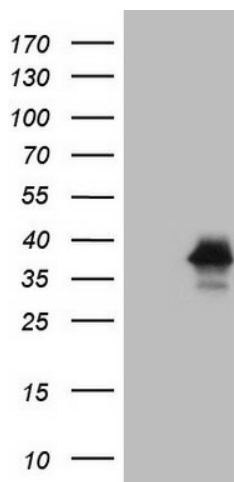
Product data:

Product Type:	Primary Antibodies
Clone Name:	OTI2D7
Applications:	WB
Recommend Dilution:	WB 1:2000
Reactivity:	Human
Host:	Mouse
Isotype:	IgG2a
Clonality:	Monoclonal
Immunogen:	Full length human recombinant protein of human ASB8(NP_077000) produced in E.coli.
Formulation:	PBS (PH 7.3) containing 1% BSA, 50% glycerol and 0.02% sodium azide.
Concentration:	1 mg/ml
Purification:	Purified from mouse ascites fluids or tissue culture supernatant by affinity chromatography (protein A/G)
Predicted Protein Size:	31.5 kDa
Gene Name:	ankyrin repeat and SOCS box containing 8
Database Link:	NP_077000 Entrez Gene 140461 Human
Background:	May be a substrate-recognition component of a SCF-like ECS (Elongin-Cullin-SOCS-box protein) E3 ubiquitin-protein ligase complex which mediates the ubiquitination and subsequent proteasomal degradation of target proteins. [UniProtKB/Swiss-Prot Function]
Synonyms:	PP14212
Protein Families:	Druggable Genome



[View online »](#)

Product images:



HEK293T cells were transfected with the pCMV6-ENTRY control (Left lane) or pCMV6-ENTRY ASB8 ([RC201716], Right lane) cDNA for 48 hrs and lysed. Equivalent amounts of cell lysates (5 ug per lane) were separated by SDS-PAGE and immunoblotted with anti-ASB8 (1:2000). Positive lysates [LY411366] (100ug) and [LC411366] (20ug) can be purchased separately from OriGene.