

Product datasheet for **TA808290**

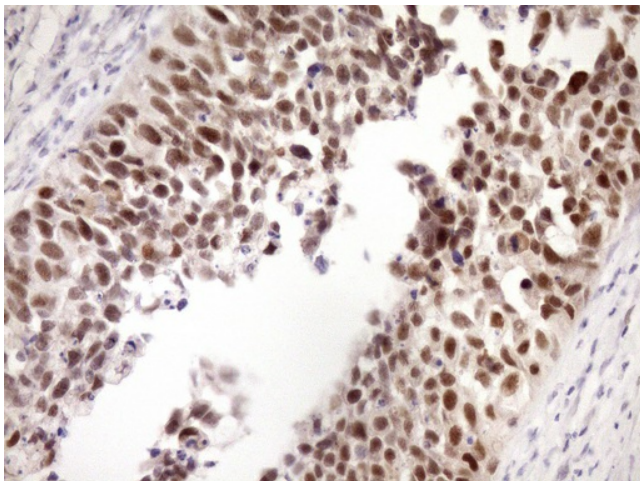
ZC3H8 Mouse Monoclonal Antibody [Clone ID: OTI9F11]

Product data:

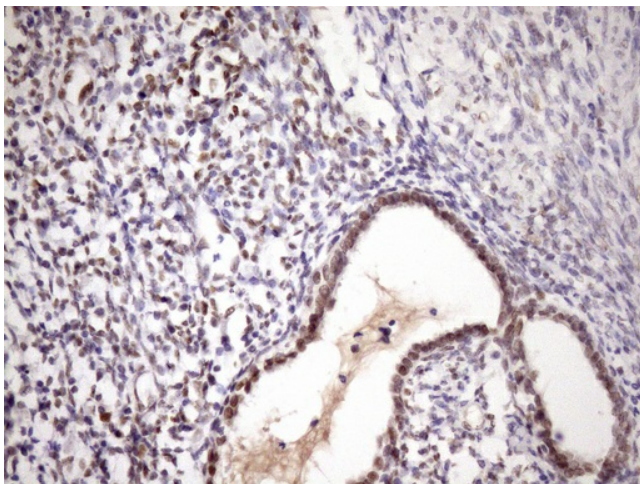
Product Type:	Primary Antibodies
Clone Name:	OTI9F11
Applications:	IHC
Recommend Dilution:	IHC 1:150
Reactivity:	Human
Host:	Mouse
Isotype:	IgG1
Clonality:	Monoclonal
Immunogen:	Full length human recombinant protein of human ZC3H8 (NP_115883) produced in E.coli.
Formulation:	PBS (PH 7.3) containing 1% BSA, 50% glycerol and 0.02% sodium azide.
Concentration:	1 mg/ml
Purification:	Purified from mouse ascites fluids or tissue culture supernatant by affinity chromatography (protein A/G)
Predicted Protein Size:	33.4 kDa
Gene Name:	zinc finger CCCH-type containing 8
Database Link:	NP_115883 Entrez Gene 84524 Human
Synonyms:	Fliz1; ZC3HDC8



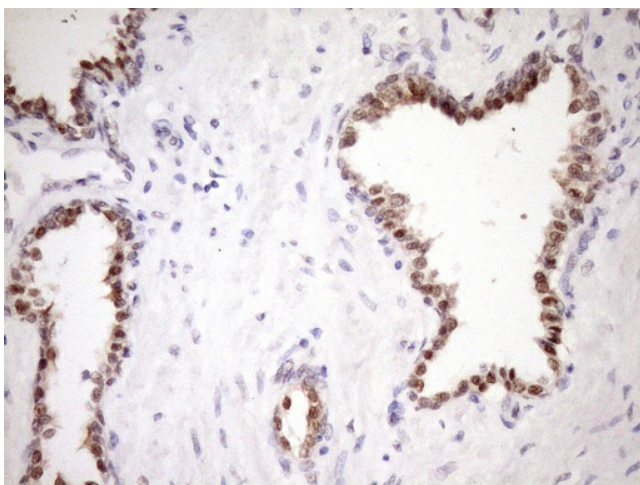
[View online »](#)

Product images:

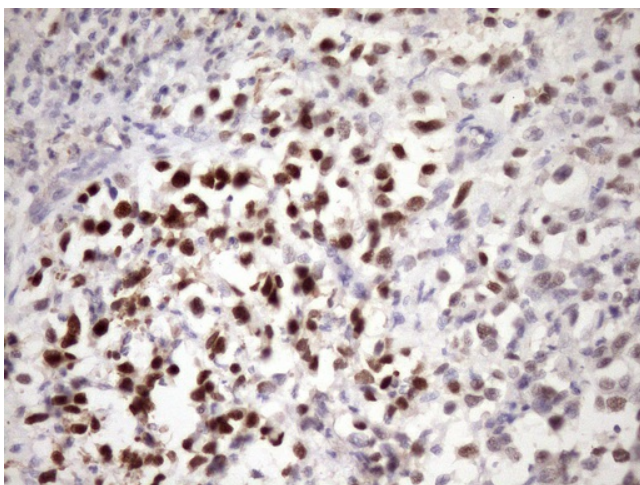
Immunohistochemical staining of paraffin-embedded Carcinoma of Human kidney tissue using anti-ZC3H8 mouse monoclonal antibody. (Heat-induced epitope retrieval by Tris-EDTA, pH8.0, TA808290) (1:150)



Immunohistochemical staining of paraffin-embedded Carcinoma of Human pancreas tissue using anti-ZC3H8 mouse monoclonal antibody. (Heat-induced epitope retrieval by Tris-EDTA, pH8.0, TA808290) (1:150)



Immunohistochemical staining of paraffin-embedded Carcinoma of Human prostate tissue using anti-ZC3H8 mouse monoclonal antibody. (Heat-induced epitope retrieval by Tris-EDTA, pH8.0, TA808290) (1:150)



Immunohistochemical staining of paraffin-embedded Human bladder tissue within the normal limits using anti-ZC3H8 mouse monoclonal antibody. (Heat-induced epitope retrieval by Tris-EDTA, pH8.0, TA808290) (1:150)