

Product datasheet for TA808194

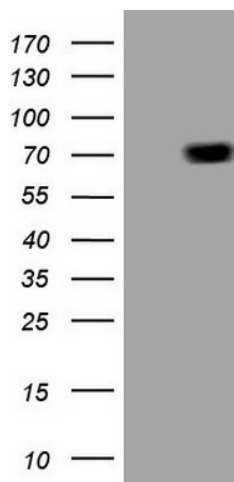
ALAS1 Mouse Monoclonal Antibody [Clone ID: OTI5D5]

Product data:

Product Type:	Primary Antibodies
Clone Name:	OTI5D5
Applications:	WB
Recommend Dilution:	WB 1:2000
Reactivity:	Human
Host:	Mouse
Isotype:	IgG1
Clonality:	Monoclonal
Immunogen:	Human recombinant protein fragment corresponding to amino acids 57-308 of human ALAS1(NP_000679) produced in E.coli.
Formulation:	PBS (PH 7.3) containing 1% BSA, 50% glycerol and 0.02% sodium azide.
Concentration:	1 mg/ml
Purification:	Purified from mouse ascites fluids or tissue culture supernatant by affinity chromatography (protein A/G)
Predicted Protein Size:	70.4 kDa
Gene Name:	5'-aminolevulinate synthase 1
Database Link:	NP_000679 Entrez Gene 211 Human
Background:	This gene encodes the mitochondrial enzyme which is catalyzes the rate-limiting step in heme (iron-protoporphyrin) biosynthesis. The enzyme encoded by this gene is the housekeeping enzyme; a separate gene encodes a form of the enzyme that is specific for erythroid tissue. The level of the mature encoded protein is regulated by heme: high levels of heme down-regulate the mature enzyme in mitochondria while low heme levels up-regulate. A pseudogene of this gene is located on chromosome 12. Multiple alternatively spliced variants, encoding the same protein, have been identified. [provided by RefSeq, Dec 2011]
Synonyms:	ALAS; ALAS-H; ALAS3; ALASH; MIG4
Protein Pathways:	Glycine, serine and threonine metabolism, Metabolic pathways, Porphyrin and chlorophyll metabolism



[View online »](#)

Product images:

HEK293T cells were transfected with the pCMV6-ENTRY control (Left lane) or pCMV6-ENTRY ALAS1 ([RC219938], Right lane) cDNA for 48 hrs and lysed. Equivalent amounts of cell lysates (5 ug per lane) were separated by SDS-PAGE and immunoblotted with anti-ALAS1 (1:2000). Positive lysates [LY400229] (100ug) and [LC400229] (20ug) can be purchased separately from OriGene.