

Product datasheet for TA808140

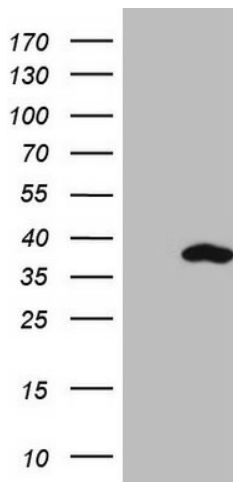
SNRPB2 Mouse Monoclonal Antibody [Clone ID: OTI2A5]

Product data:

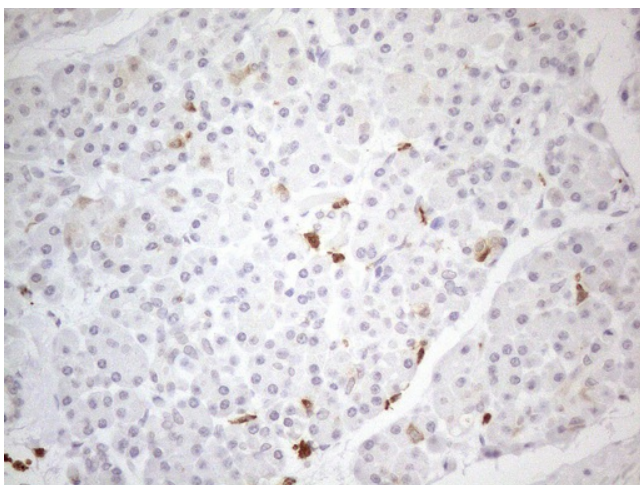
Product Type:	Primary Antibodies
Clone Name:	OTI2A5
Applications:	IHC, WB
Recommend Dilution:	WB 1:2000, IHC 1:150
Reactivity:	Human
Host:	Mouse
Isotype:	IgG1
Clonality:	Monoclonal
Immunogen:	Full length human recombinant protein of human SNRPB2 (NP_937863) produced in E.coli.
Formulation:	PBS (PH 7.3) containing 1% BSA, 50% glycerol and 0.02% sodium azide.
Concentration:	1 mg/ml
Purification:	Purified from mouse ascites fluids or tissue culture supernatant by affinity chromatography (protein A/G)
Predicted Protein Size:	25.3 kDa
Gene Name:	small nuclear ribonucleoprotein polypeptide B2
Database Link:	NP_937863 Entrez Gene 6629 Human
Background:	The protein encoded by this gene associates with stem loop IV of U2 small nuclear ribonucleoprotein (U2 snRNP) in the presence of snRNP-A'. The encoded protein may play a role in pre-mRNA splicing. Autoantibodies from patients with systemic lupus erythematosus frequently recognize epitopes on the encoded protein. Two transcript variants encoding the same protein have been found for this gene. [provided by RefSeq, Jul 2008]
Synonyms:	Msl1; U2B; U2B''
Protein Pathways:	Spliceosome



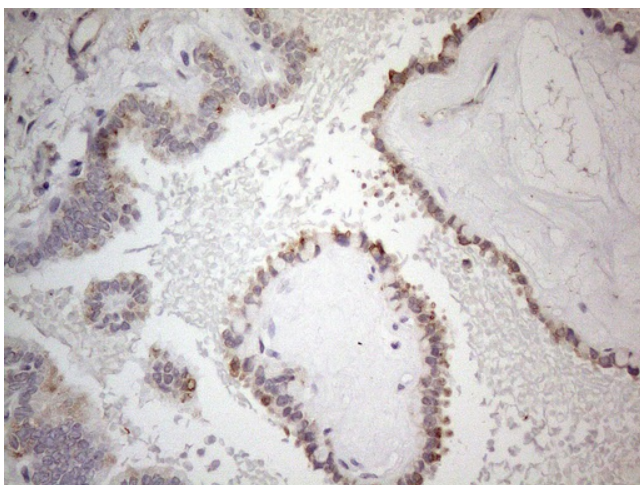
[View online »](#)

Product images:

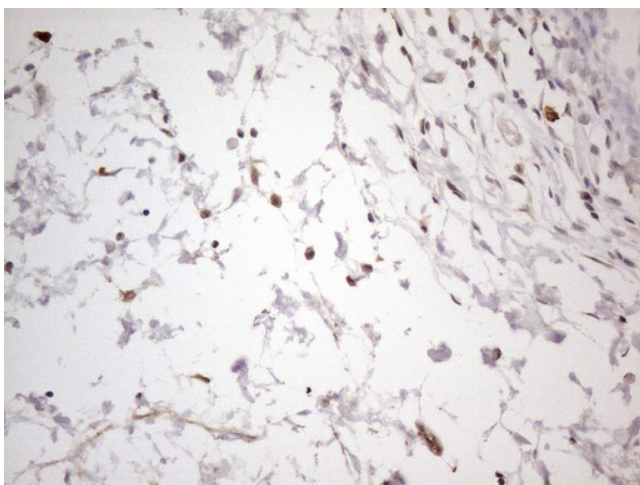
HEK293T cells were transfected with the pCMV6-ENTRY control (Left lane) or pCMV6-ENTRY SNRPB2 ([RC207603], Right lane) cDNA for 48 hrs and lysed. Equivalent amounts of cell lysates (5 ug per lane) were separated by SDS-PAGE and immunoblotted with anti-SNRPB2 (1:2000). Positive lysates [LY404952] (100ug) and [LC404952] (20ug) can be purchased separately from OriGene.



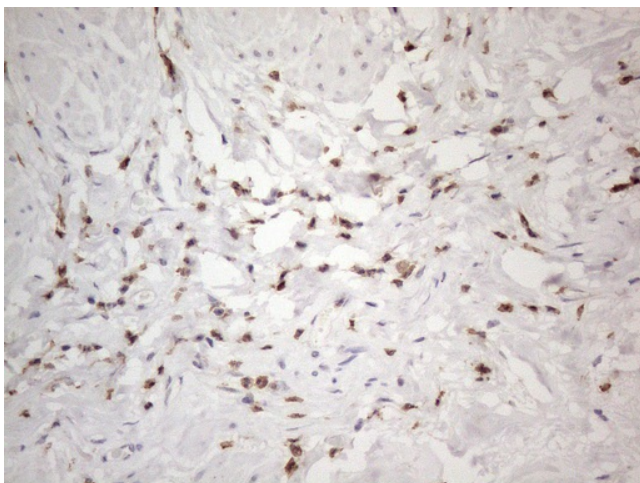
Immunohistochemical staining of paraffin-embedded Human pancreas tissue within the normal limits using anti-SNRPB2 mouse monoclonal antibody. (Heat-induced epitope retrieval by 1mM EDTA in 10mM Tris buffer (pH8.5) at 120°C for 3min, TA808140) (1:150)



Immunohistochemical staining of paraffin-embedded Carcinoma of Human thyroid tissue using anti-SNRPB2 mouse monoclonal antibody. (Heat-induced epitope retrieval by 1mM EDTA in 10mM Tris buffer (pH8.5) at 120°C for 3min, TA808140) (1:150)



Immunohistochemical staining of paraffin-embedded Human bladder tissue within the normal limits using anti-SNRPB2 mouse monoclonal antibody. (Heat-induced epitope retrieval by 1mM EDTA in 10mM Tris buffer (pH8.5) at 120°C for 3min, TA808140) (1:150)



Immunohistochemical staining of paraffin-embedded Carcinoma of Human bladder tissue using anti-SNRPB2 mouse monoclonal antibody. (Heat-induced epitope retrieval by 1mM EDTA in 10mM Tris buffer (pH8.5) at 120°C for 3min, TA808140) (1:150)