

## Product datasheet for TA807998

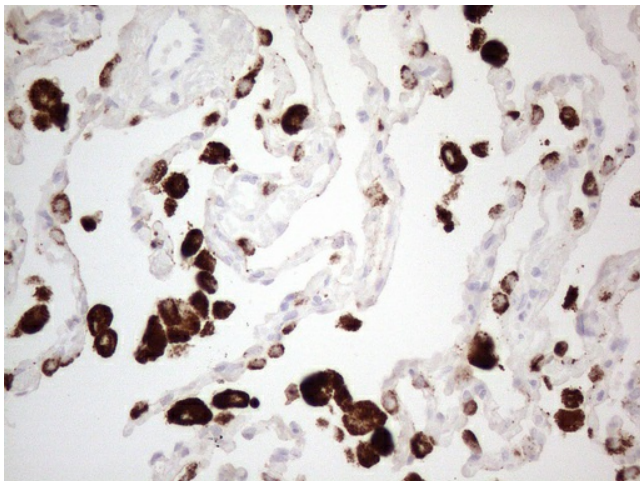
### NAPSIN A (NAPSA) Mouse Monoclonal Antibody [Clone ID: OTI2F11]

#### Product data:

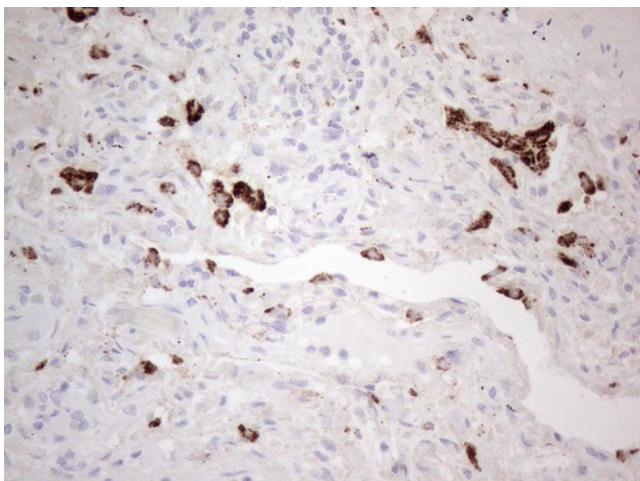
Product Type:	Primary Antibodies
Clone Name:	OTI2F11
Applications:	IHC
Recommend Dilution:	IHC 1:150
Reactivity:	Human
Host:	Mouse
Isotype:	IgG2b
Clonality:	Monoclonal
Immunogen:	Human recombinant protein fragment corresponding to amino acids 64-244 of human NAPSA(NP_004842) produced in E.coli.
Formulation:	PBS (PH 7.3) containing 1% BSA, 50% glycerol and 0.02% sodium azide.
Concentration:	1 mg/ml
Purification:	Purified from mouse ascites fluids or tissue culture supernatant by affinity chromatography (protein A/G)
Predicted Protein Size:	42.7 kDa
Gene Name:	napin A aspartic peptidase
Database Link:	<a href="#">NP_004842 Entrez Gene 9476 Human</a>
Background:	The activation peptides of aspartic proteinases plays role as inhibitors of the active site. These peptide segments, or pro-parts, are deemed important for correct folding, targeting, and control of the activation of aspartic proteinase zymogens. The pronapsin A gene is expressed predominantly in lung and kidney. Its translation product is predicted to be a fully functional, glycosylated aspartic proteinase precursor containing an RGD motif and an additional 18 residues at its C-terminus. [provided by RefSeq, Jul 2008]
Synonyms:	KAP; Kdap; NAP1; NAPA; SNAPA
Protein Families:	Druggable Genome, Protease
Protein Pathways:	Lysosome



[View online »](#)

**Product images:**

Immunohistochemical staining of paraffin-embedded Human lung tissue within the normal limits using anti-NAPSA mouse monoclonal antibody. (Heat-induced epitope retrieval by 1mM EDTA in 10mM Tris buffer (pH8.5) at 110°C for 10min, TA807998) (1:150)



Immunohistochemical staining of paraffin-embedded Carcinoma of Human lung tissue using anti-NAPSA mouse monoclonal antibody. (Heat-induced epitope retrieval by 1mM EDTA in 10mM Tris buffer (pH8.5) at 110°C for 10min, TA807998) (1:150)