

Product datasheet for **TA807723**

C Reactive Protein (CRP) Mouse Monoclonal Antibody [Clone ID: OTI4G8]

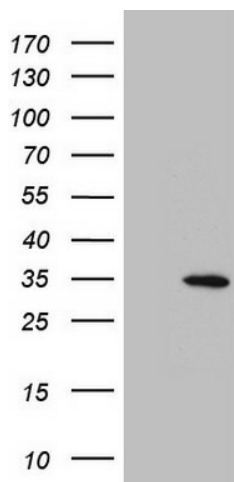
Product data:

Product Type:	Primary Antibodies
Clone Name:	OTI4G8
Applications:	IHC, WB
Recommend Dilution:	WB 1:500, IHC 1:150
Reactivity:	Human
Host:	Mouse
Isotype:	IgG1
Clonality:	Monoclonal
Immunogen:	Full length human recombinant protein of human CRP (NP_000558) produced in HEK293T cell.
Formulation:	PBS (PH 7.3) containing 1% BSA, 50% glycerol and 0.02% sodium azide.
Concentration:	1 mg/ml
Purification:	Purified from mouse ascites fluids or tissue culture supernatant by affinity chromatography (protein A/G)
Predicted Protein Size:	23 kDa
Gene Name:	C-reactive protein, pentraxin-related
Database Link:	NP_000558 Entrez Gene 1401 Human
Background:	The protein encoded by this gene belongs to the pentaxin family. It is involved in several host defense related functions based on its ability to recognize foreign pathogens and damaged cells of the host and to initiate their elimination by interacting with humoral and cellular effector systems in the blood. Consequently, the level of this protein in plasma increases greatly during acute phase response to tissue injury, infection, or other inflammatory stimuli. [provided by RefSeq, Sep 2009]
Synonyms:	PTX1
Protein Families:	Secreted Protein

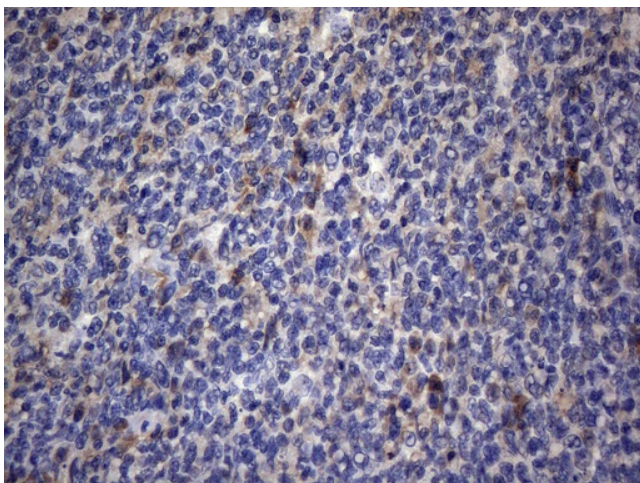


[View online »](#)

Product images:



HEK293T cells were transfected with the pCMV6-ENTRY control (Left lane) or pCMV6-ENTRY CRP ([RC217269], Right lane) cDNA for 48 hrs and lysed. Equivalent amounts of cell lysates (5 ug per lane) were separated by SDS-PAGE and immunoblotted with anti-CRP (1:500).



Immunohistochemical staining of paraffin-embedded Human tonsil within the normal limits using anti-CRP mouse monoclonal antibody. (Heat-induced epitope retrieval by 1mM EDTA in 10mM Tris buffer (pH8.5) at 120°C for 3min, TA807723) (1:150)