

## Product datasheet for **TA807691**

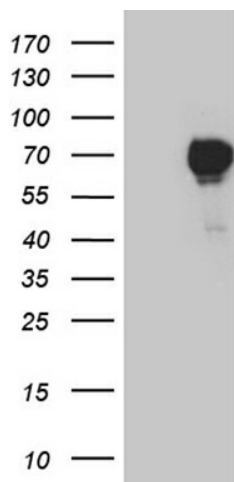
### **FOXC2 Mouse Monoclonal Antibody [Clone ID: OTI2G5]**

#### **Product data:**

<b>Product Type:</b>	Primary Antibodies
<b>Clone Name:</b>	OTI2G5
<b>Applications:</b>	WB
<b>Recommend Dilution:</b>	WB 1:2000
<b>Reactivity:</b>	Human
<b>Host:</b>	Mouse
<b>Isotype:</b>	IgG1
<b>Clonality:</b>	Monoclonal
<b>Immunogen:</b>	Human recombinant protein fragment corresponding to amino acids 1-280 of human FOXC2(NP_005242) produced in E.coli.
<b>Formulation:</b>	PBS (PH 7.3) containing 1% BSA, 50% glycerol and 0.02% sodium azide.
<b>Concentration:</b>	1 mg/ml
<b>Purification:</b>	Purified from mouse ascites fluids or tissue culture supernatant by affinity chromatography (protein A/G)
<b>Predicted Protein Size:</b>	53.5 kDa
<b>Gene Name:</b>	forkhead box C2
<b>Database Link:</b>	<a href="#">NP_005242 Entrez Gene 2303 Human</a>
<b>Background:</b>	This gene belongs to the forkhead family of transcription factors which is characterized by a distinct DNA-binding forkhead domain. The specific function of this gene has not yet been determined; however, it may play a role in the development of mesenchymal tissues. [provided by RefSeq, Jul 2008]
<b>Synonyms:</b>	FKHL14; LD; MFH-1; MFH1
<b>Protein Families:</b>	Druggable Genome, Transcription Factors



[View online »](#)

**Product images:**

HEK293T cells were transfected with the pCMV6-ENTRY control (Left lane) or pCMV6-ENTRY FOXC2 ([RC223412], Right lane) cDNA for 48 hrs and lysed. Equivalent amounts of cell lysates (5 ug per lane) were separated by SDS-PAGE and immunoblotted with anti-FOXC2 (1:2000). Positive lysates [LY401613] (100ug) and [LC401613] (20ug) can be purchased separately from OriGene.