

## Product datasheet for **TA807590**

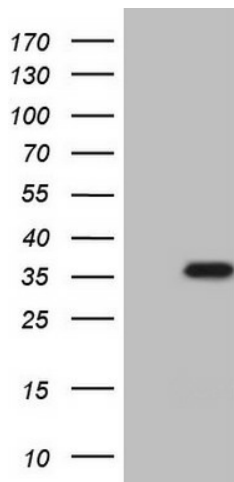
### WDR61 Mouse Monoclonal Antibody [Clone ID: OTI2H10]

#### Product data:

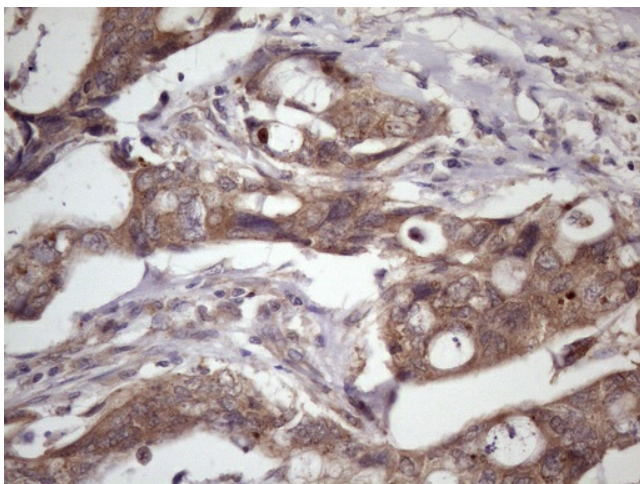
Product Type:	Primary Antibodies
Clone Name:	OTI2H10
Applications:	IHC, WB
Recommend Dilution:	WB 1:2000, IHC 1:150
Reactivity:	Human
Host:	Mouse
Isotype:	IgG1
Clonality:	Monoclonal
Immunogen:	Human recombinant protein fragment corresponding to amino acids 92-305 of human WDR61(NP_079510) produced in E.coli.
Formulation:	PBS (PH 7.3) containing 1% BSA, 50% glycerol and 0.02% sodium azide.
Concentration:	1 mg/ml
Purification:	Purified from mouse ascites fluids or tissue culture supernatant by affinity chromatography (protein A/G)
Predicted Protein Size:	33.4 kDa
Gene Name:	WD repeat domain 61
Database Link:	<a href="#">NP_079510 Entrez Gene 80349 Human</a>
Background:	WDR61 is a subunit of the human PAF and SKI complexes, which function in transcriptional regulation and are involved in events downstream of RNA synthesis, such as RNA surveillance (Zhu et al., 2005 [PubMed 16024656]). [supplied by OMIM, Mar 2008]
Synonyms:	REC14; SKI8
Protein Pathways:	RNA degradation



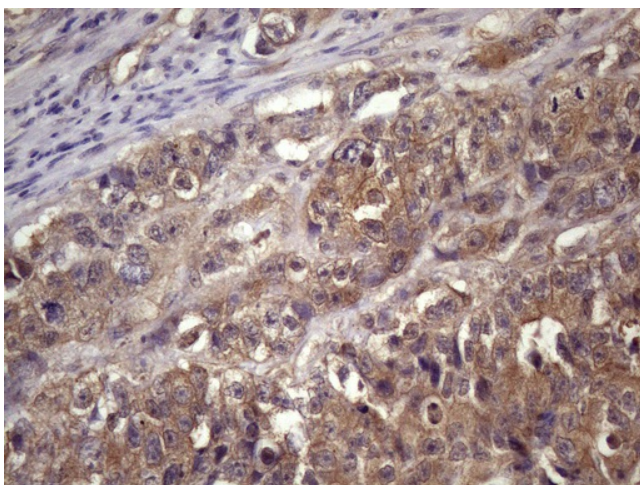
[View online »](#)

**Product images:**

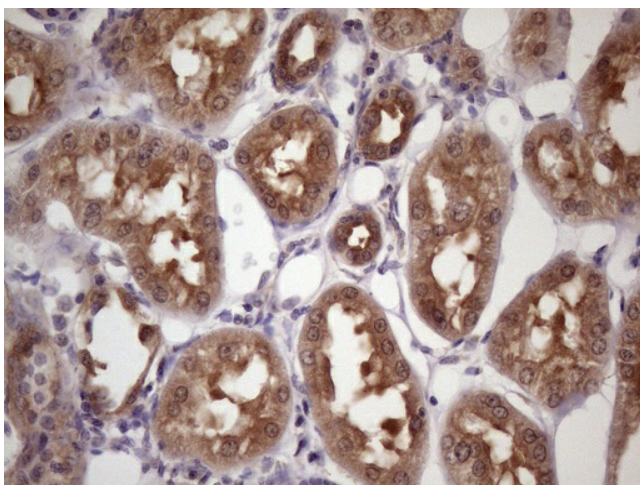
HEK293T cells were transfected with the pCMV6-ENTRY control (Left lane) or pCMV6-ENTRY WDR61 ([RC203963], Right lane) cDNA for 48 hrs and lysed. Equivalent amounts of cell lysates (5 ug per lane) were separated by SDS-PAGE and immunoblotted with anti-WDR61 (1:2000). Positive lysates [LY410745] (100ug) and [LC410745] (20ug) can be purchased separately from OriGene.



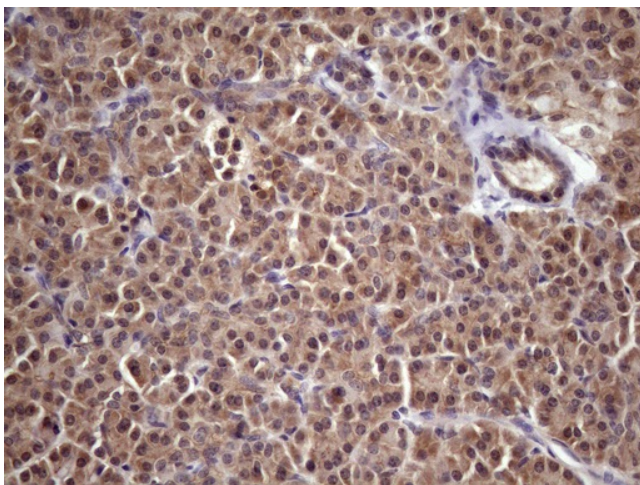
Immunohistochemical staining of paraffin-embedded Adenocarcinoma of Human breast tissue using anti-WDR61 mouse monoclonal antibody. (Heat-induced epitope retrieval by 1 mM EDTA in 10mM Tris, pH8.5, 120°C for 3min, TA807590) (1:150)



Immunohistochemical staining of paraffin-embedded Adenocarcinoma of Human colon tissue using anti-WDR61 mouse monoclonal antibody. (Heat-induced epitope retrieval by 1 mM EDTA in 10mM Tris, pH8.5, 120°C for 3min, TA807590) (1:150)



Immunohistochemical staining of paraffin-embedded Human Kidney tissue within the normal limits using anti-WDR61 mouse monoclonal antibody. (Heat-induced epitope retrieval by 1 mM EDTA in 10mM Tris, pH8.5, 120°C for 3min, TA807590) (1:150)



Immunohistochemical staining of paraffin-embedded Human pancreas tissue within the normal limits using anti-WDR61 mouse monoclonal antibody. (Heat-induced epitope retrieval by 1 mM EDTA in 10mM Tris, pH8.5, 120°C for 3min, TA807590) (1:150)