

Product datasheet for TA807500

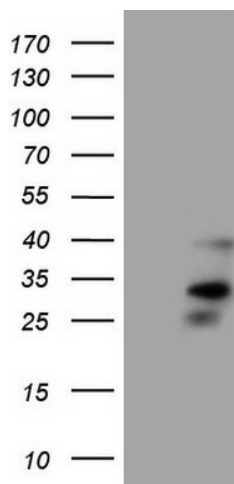
ORAI2 Mouse Monoclonal Antibody [Clone ID: OTI8D11]

Product data:

| | |
|-------------------------|---|
| Product Type: | Primary Antibodies |
| Clone Name: | OTI8D11 |
| Applications: | WB |
| Recommend Dilution: | WB 1:500 |
| Reactivity: | Human |
| Host: | Mouse |
| Isotype: | IgG2b |
| Clonality: | Monoclonal |
| Immunogen: | Full length human recombinant protein of human ORAI2 (NP_116220) produced in HEK293T cell. |
| Formulation: | PBS (PH 7.3) containing 1% BSA, 50% glycerol and 0.02% sodium azide. |
| Concentration: | 1 mg/ml |
| Purification: | Purified from mouse ascites fluids or tissue culture supernatant by affinity chromatography (protein A/G) |
| Predicted Protein Size: | 28.4 kDa |
| Gene Name: | ORAI calcium release-activated calcium modulator 2 |
| Database Link: | NP_116220 Entrez Gene 80228 Human |
| Synonyms: | C7orf19; CBCIP2; MEM142B; TMEM142B |
| Protein Families: | Transmembrane |



[View online »](#)

Product images:

HEK293T cells were transfected with the pCMV6-ENTRY control (Left lane) or pCMV6-ENTRY ORAI2 ([RC221137], Right lane) cDNA for 48 hrs and lysed. Equivalent amounts of cell lysates (5 ug per lane) were separated by SDS-PAGE and immunoblotted with anti-ORAI2 (1:500). Positive lysates [LY409919] (100ug) and [LC409919] (20ug) can be purchased separately from OriGene.