

## Product datasheet for TA807444

### LOXL2 Mouse Monoclonal Antibody [Clone ID: OTI4H3]

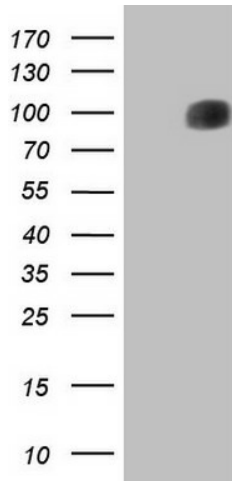
#### Product data:

Product Type:	Primary Antibodies
Clone Name:	OTI4H3
Applications:	WB
Recommend Dilution:	WB 1:2000
Reactivity:	Human
Host:	Mouse
Isotype:	IgG2b
Clonality:	Monoclonal
Immunogen:	Human recombinant protein fragment corresponding to amino acids 152-450 of human LOXL2(NP_002309) produced in E.coli.
Formulation:	PBS (PH 7.3) containing 1% BSA, 50% glycerol and 0.02% sodium azide.
Concentration:	1 mg/ml
Purification:	Purified from mouse ascites fluids or tissue culture supernatant by affinity chromatography (protein A/G)
Predicted Protein Size:	84 kDa
Gene Name:	lysyl oxidase like 2
Database Link:	<a href="#">NP_002309 Entrez Gene 4017 Human</a>
Background:	This gene encodes a member of the lysyl oxidase gene family. The prototypic member of the family is essential to the biogenesis of connective tissue, encoding an extracellular copper-dependent amine oxidase that catalyses the first step in the formation of crosslinks in collagens and elastin. A highly conserved amino acid sequence at the C-terminus end appears to be sufficient for amine oxidase activity, suggesting that each family member may retain this function. The N-terminus is poorly conserved and may impart additional roles in developmental regulation, senescence, tumor suppression, cell growth control, and chemotaxis to each member of the family. [provided by RefSeq, Jul 2008]
Synonyms:	LOR2; WS9-14
Protein Families:	Druggable Genome, Secreted Protein

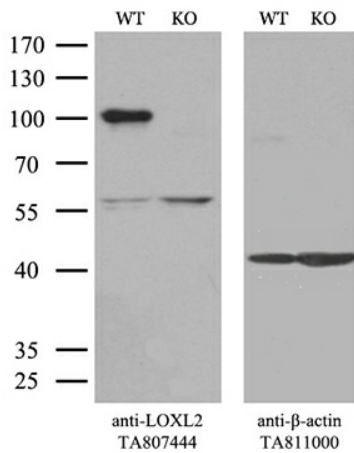


[View online »](#)

Product images:



HEK293T cells were transfected with the pCMV6-ENTRY control (Left lane) or pCMV6-ENTRY LOXL2 ([RC200455], Right lane) cDNA for 48 hrs and lysed. Equivalent amounts of cell lysates (5 ug per lane) were separated by SDS-PAGE and immunoblotted with anti-LOXL2 (1:2000). Positive lysates [LY400844] (100ug) and [LC400844] (20ug) can be purchased separately from OriGene.



Equivalent amounts of cell lysates (10 ug per lane) of wild-type HeLa cells (WT, Cat# LC810HELA) and LOXL2-Knockout HeLa cells (KO, Cat# [LC810132]) were separated by SDS-PAGE and immunoblotted with anti-LOXL2 monoclonal antibody TA807444. Then the blotted membrane was stripped and reprobed with anti-b-actin antibody ([TA811000]) as a loading control (1:500).