

Product datasheet for TA806165

YB1 (YBX1) Mouse Monoclonal Antibody [Clone ID: OTI2C9]

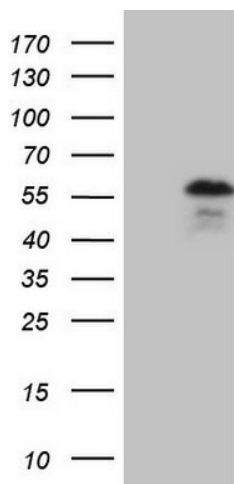
Product data:

Product Type:	Primary Antibodies
Clone Name:	OTI2C9
Applications:	WB
Recommend Dilution:	WB 1:2000
Reactivity:	Human
Host:	Mouse
Isotype:	IgG1
Clonality:	Monoclonal
Immunogen:	Full length human recombinant protein of human YBX1 (NP_004550) produced in E.coli.
Formulation:	PBS (PH 7.3) containing 1% BSA, 50% glycerol and 0.02% sodium azide.
Concentration:	1 mg/ml
Purification:	Purified from mouse ascites fluids or tissue culture supernatant by affinity chromatography (protein A/G)
Predicted Protein Size:	35.7 kDa
Gene Name:	Y-box binding protein 1
Database Link:	NP_004550 Entrez Gene 4904 Human
Synonyms:	BP-8; CSDA2; CSDB; DBPB; MDR-NF1; NSEP-1; NSEP1; YB-1; YB1
Protein Families:	ES Cell Differentiation/IPS, Transcription Factors



[View online »](#)

Product images:



HEK293T cells were transfected with the pCMV6-ENTRY control (Left lane) or pCMV6-ENTRY YBX1 ([RC209835], Right lane) cDNA for 48 hrs and lysed. Equivalent amounts of cell lysates (5 ug per lane) were separated by SDS-PAGE and immunoblotted with anti-YBX1. Positive lysates [LY417905] (100ug) and [LC417905] (20ug) can be purchased separately from OriGene.