

Product datasheet for TA806160

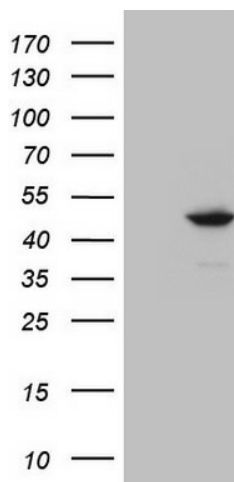
INDOL1 (IDO2) Mouse Monoclonal Antibody [Clone ID: OTI11B2]

Product data:

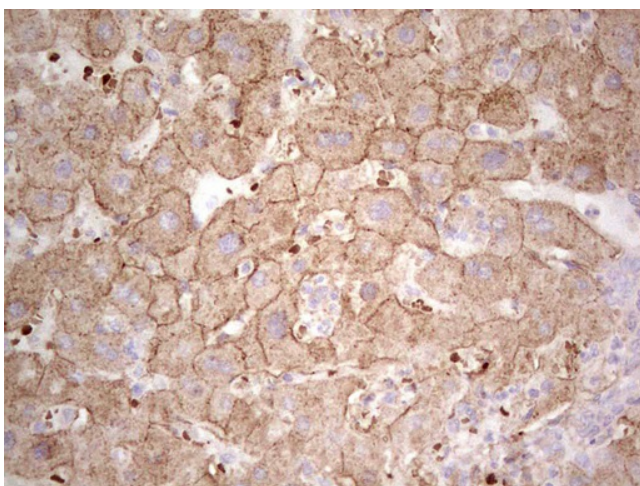
Product Type:	Primary Antibodies
Clone Name:	OTI11B2
Applications:	IHC, WB
Recommend Dilution:	WB 1:2000, IHC 1:150
Reactivity:	Human
Host:	Mouse
Isotype:	IgG1
Clonality:	Monoclonal
Immunogen:	Full length human recombinant protein of human IDO2 (NP_919270) produced in HEK293T cell.
Formulation:	PBS (PH 7.3) containing 1% BSA, 50% glycerol and 0.02% sodium azide.
Concentration:	1 mg/ml
Purification:	Purified from mouse ascites fluids or tissue culture supernatant by affinity chromatography (protein A/G)
Predicted Protein Size:	46.9 kDa
Gene Name:	indoleamine 2,3-dioxygenase 2
Database Link:	NP_919270 Entrez Gene 169355 Human
Background:	Along with the enzymes encoded by the INDO (MIM 147435) and TDO2 (MIM 191070) genes, the enzyme encoded by the INDOL1 gene metabolizes tryptophan in the kynurenine pathway (Ball et al., 2007 [PubMed 17499941]). [supplied by OMIM, Feb 2011]
Synonyms:	INDOL1
Protein Pathways:	Metabolic pathways, Tryptophan metabolism



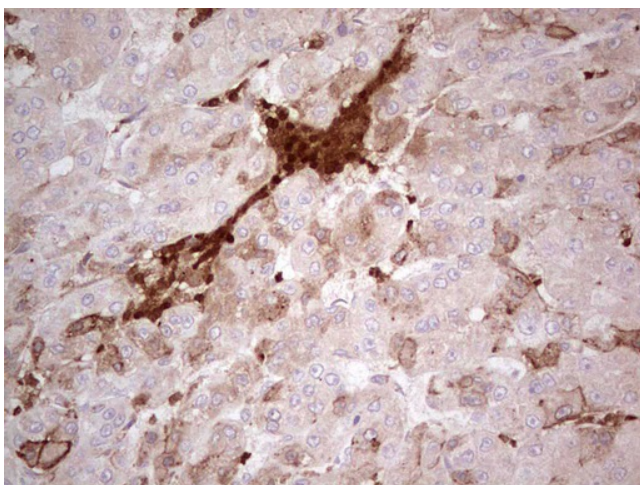
[View online »](#)

Product images:

HEK293T cells were transfected with the pCMV6-ENTRY control (Left lane) or pCMV6-ENTRY IDO2 ([RC223337], Right lane) cDNA for 48 hrs and lysed. Equivalent amounts of cell lysates (5 ug per lane) were separated by SDS-PAGE and immunoblotted with anti-IDO2. Positive lysates [LY403659] (100ug) and [LC403659] (20ug) can be purchased separately from OriGene.



Immunohistochemical staining of paraffin-embedded Human liver tissue within the normal limits using anti-IDO2 mouse monoclonal antibody. (Heat-induced epitope retrieval by 1 mM EDTA in 10mM Tris, pH8.5, 120°C for 3min, TA806160)



Immunohistochemical staining of paraffin-embedded Carcinoma of Human liver tissue using anti-IDO2 mouse monoclonal antibody. (Heat-induced epitope retrieval by 1 mM EDTA in 10mM Tris, pH8.5, 120°C for 3min, TA806160)