

Product datasheet for **TA805678**

ROS1 Mouse Monoclonal Antibody [Clone ID: OT11F3]

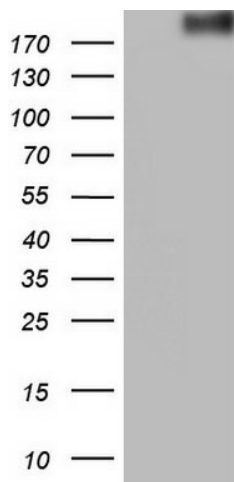
Product data:

Product Type:	Primary Antibodies
Clone Name:	OT11F3
Applications:	IF, IHC, WB
Recommend Dilution:	WB 1:2000, IHC 1:5000
Reactivity:	Human
Host:	Mouse
Isotype:	IgG1
Clonality:	Monoclonal
Immunogen:	Human recombinant protein fragment corresponding to amino acids 2126-2347 of human ROS1(NP_002935) produced in E.coli.
Formulation:	PBS (PH 7.3) containing 1% BSA, 50% glycerol and 0.02% sodium azide.
Concentration:	1 mg/ml
Purification:	Purified from mouse ascites fluids or tissue culture supernatant by affinity chromatography (protein A/G)
Gene Name:	ROS proto-oncogene 1, receptor tyrosine kinase
Database Link:	NP_002935 Entrez Gene 6098 Human
Background:	This proto-oncogene, highly-expressed in a variety of tumor cell lines, belongs to the sevenless subfamily of tyrosine kinase insulin receptor genes. The protein encoded by this gene is a type I integral membrane protein with tyrosine kinase activity. The protein may function as a growth or differentiation factor receptor. [provided by RefSeq, Jul 2008]
Synonyms:	c-ros-1; MCF3; ROS
Protein Families:	Druggable Genome, Protein Kinase, Transmembrane

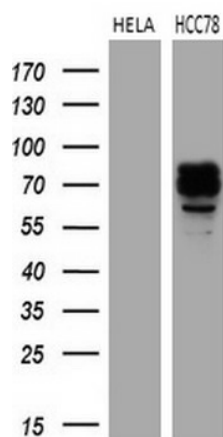


[View online »](#)

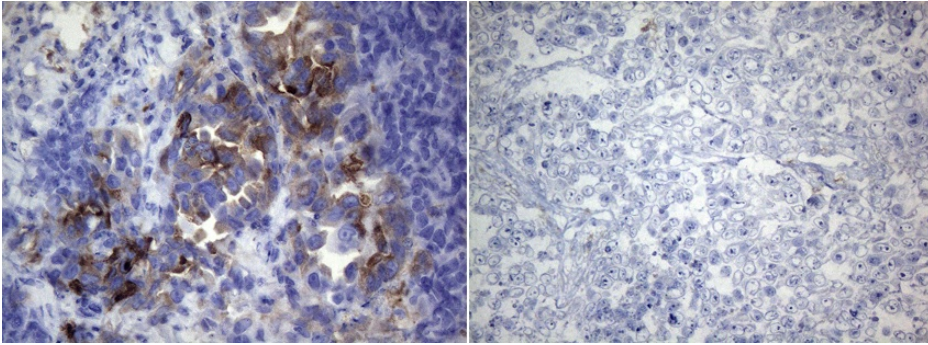
Product images:



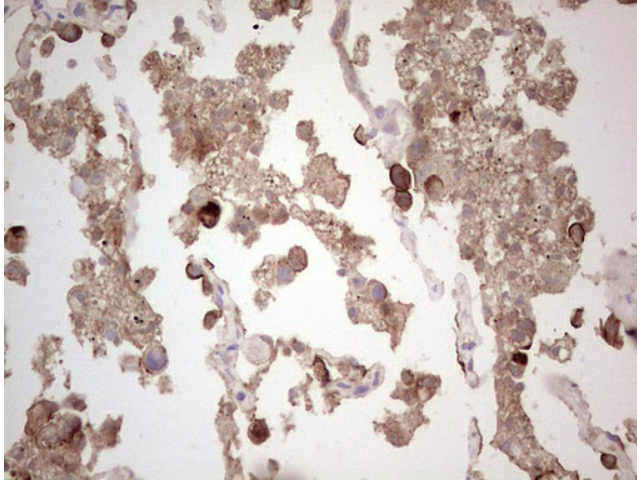
HEK293T cells were transfected with the pCMV6-ENTRY control (Left lane) or pCMV6-ENTRY ROS1 ([RC220652], Right lane) cDNA for 48 hrs and lysed. Equivalent amounts of cell lysates (5 ug per lane) were separated by SDS-PAGE and immunoblotted with anti-ROS1.



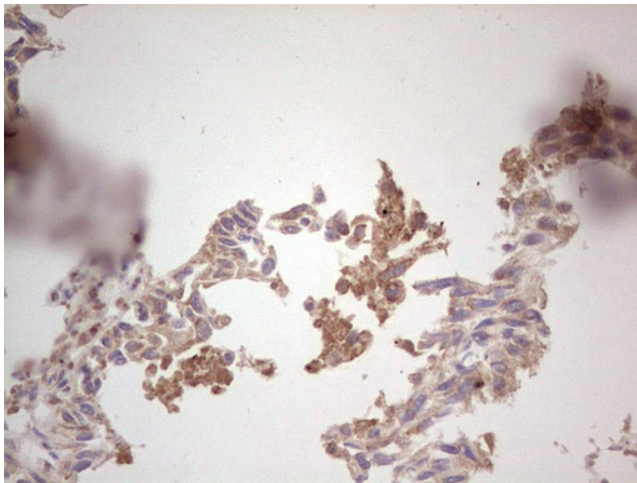
Western blot analysis of extracts (35ug) from 2 different cell lines by using anti-ROS1 monoclonal antibody (1:500).



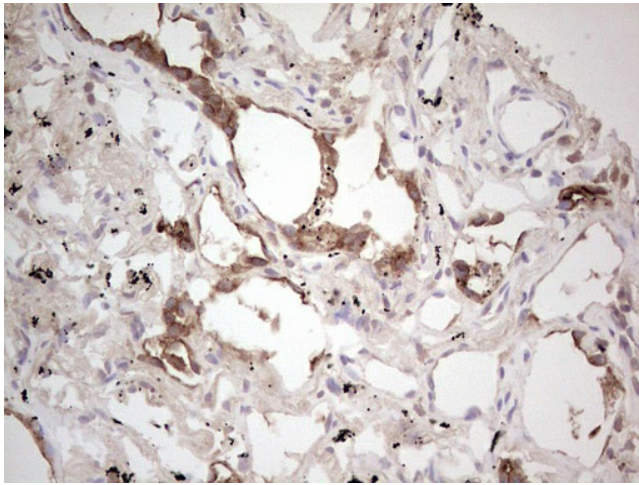
Immunohistochemical staining of paraffin-embedded HCC78 (left) and HeLa (right) xenograft using TA805678 (0.2ug/ml). (Heat-induced epitope retrieval by 1mM EDTA in 10mM Tris buffer (pH8.0) at 120°C for 3min)



Immunohistochemical staining of paraffin-embedded Carcinoma of ROS1 positive Human lung tissue using anti-ROS1 mouse monoclonal antibody. (TA805678; heat-induced epitope retrieval by 1 mM EDTA in 10mM Tris, pH8.5, 120°C for 3min)

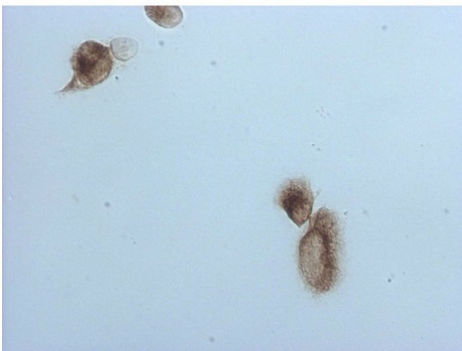


Immunohistochemical staining of paraffin-embedded Carcinoma of ROS1 positive Human lung tissue using anti-ROS1 mouse monoclonal antibody. (TA805678; heat-induced epitope retrieval by 1 mM EDTA in 10mM Tris, pH8.5, 120°C for 3min)

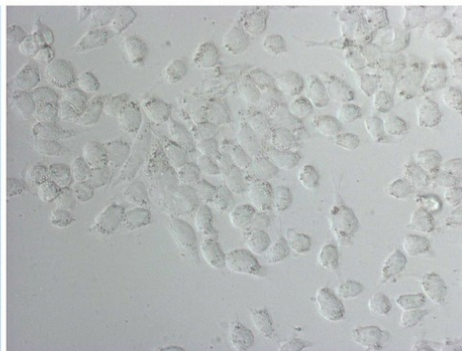


Immunohistochemical staining of paraffin-embedded Carcinoma of ROS1 positive Human lung tissue using anti-ROS1 mouse monoclonal antibody. (TA805678; heat-induced epitope retrieval by 1 mM EDTA in 10mM Tris, pH8.5, 120°C for 3min)

HCC78



HELA



Immunocytochemistry staining of HCC78 cells using anti-ROS1 mouse monoclonal antibody (TA805678) (Left). The right is HELA cells as negative control (1:2000).