

## Product datasheet for **TA805184**

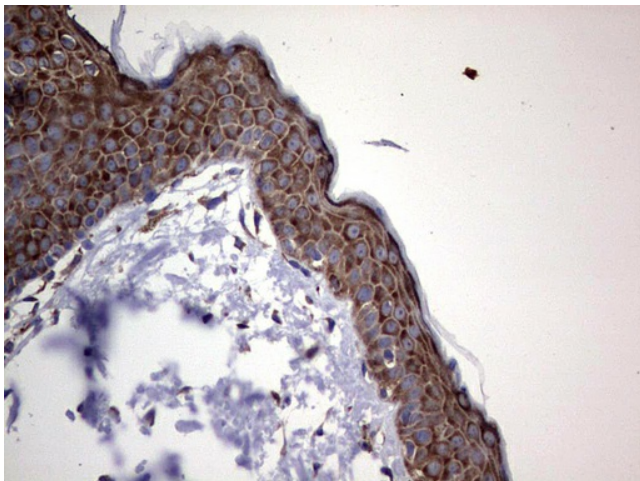
### **TMEM16A (ANO1) Mouse Monoclonal Antibody [Clone ID: OTI1C8]**

#### **Product data:**

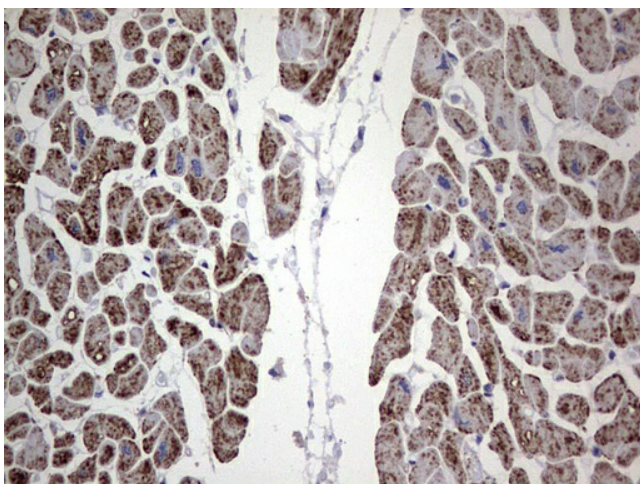
<b>Product Type:</b>	Primary Antibodies
<b>Clone Name:</b>	OTI1C8
<b>Applications:</b>	IHC
<b>Recommend Dilution:</b>	IHC 1:150
<b>Reactivity:</b>	Human
<b>Host:</b>	Mouse
<b>Isotype:</b>	IgG1
<b>Clonality:</b>	Monoclonal
<b>Immunogen:</b>	Human recombinant protein fragment corresponding to amino acids 1-333 of human ANO1 (NP_060513) produced in E.coli.
<b>Formulation:</b>	PBS (PH 7.3) containing 1% BSA, 50% glycerol and 0.02% sodium azide.
<b>Concentration:</b>	1 mg/ml
<b>Purification:</b>	Purified from mouse ascites fluids or tissue culture supernatant by affinity chromatography (protein A/G)
<b>Gene Name:</b>	anoctamin 1
<b>Database Link:</b>	<a href="#">NP_060513 Entrez Gene 55107 Human</a>
<b>Synonyms:</b>	DOG1; ORAOV2; TAOS2; TMEM16A
<b>Protein Families:</b>	Transmembrane



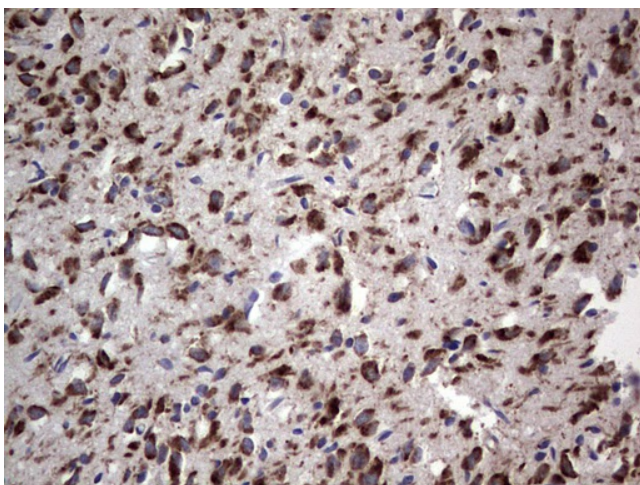
[View online »](#)

**Product images:**

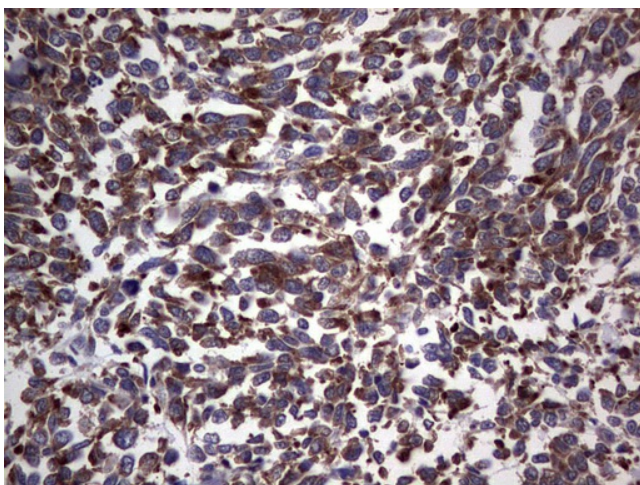
Immunohistochemical staining of paraffin-embedded Human skin tissue using anti-ANO1 mouse monoclonal antibody. (Heat-induced epitope retrieval by 1 mM EDTA in 10mM Tris, pH8.5, 120°C for 3min, TA805184)



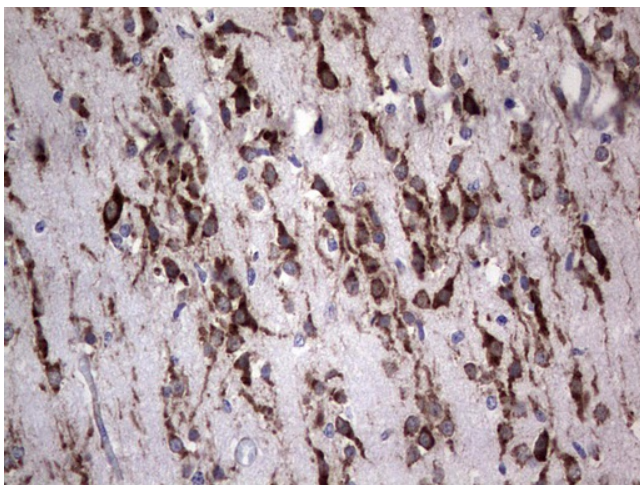
Immunohistochemical staining of paraffin-embedded Human adult heart tissue using anti-ANO1 mouse monoclonal antibody. (Heat-induced epitope retrieval by 1 mM EDTA in 10mM Tris, pH8.5, 120°C for 3min, TA805184)



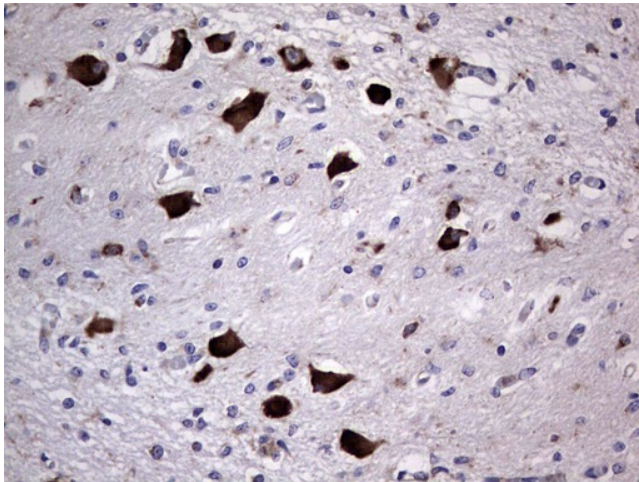
Immunohistochemical staining of paraffin-embedded Human adult brain tissue using anti-ANO1 mouse monoclonal antibody. (Heat-induced epitope retrieval by 1 mM EDTA in 10mM Tris, pH8.5, 120°C for 3min, TA805184)



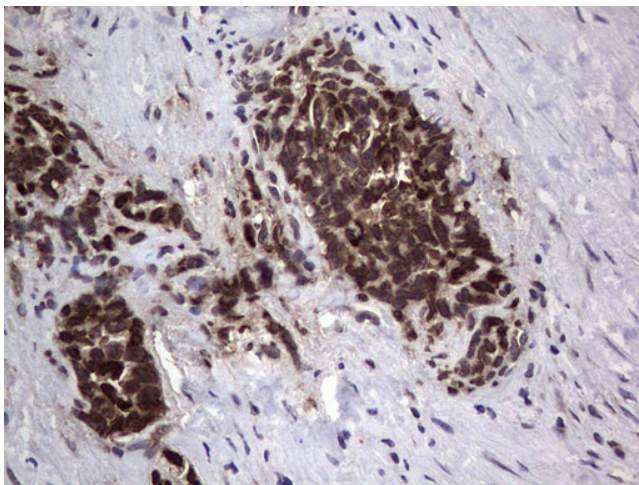
Immunohistochemical staining of paraffin-embedded Human melanoma tissue using anti-ANO1 mouse monoclonal antibody. (Heat-induced epitope retrieval by 1 mM EDTA in 10mM Tris, pH8.5, 120°C for 3min, TA805184)



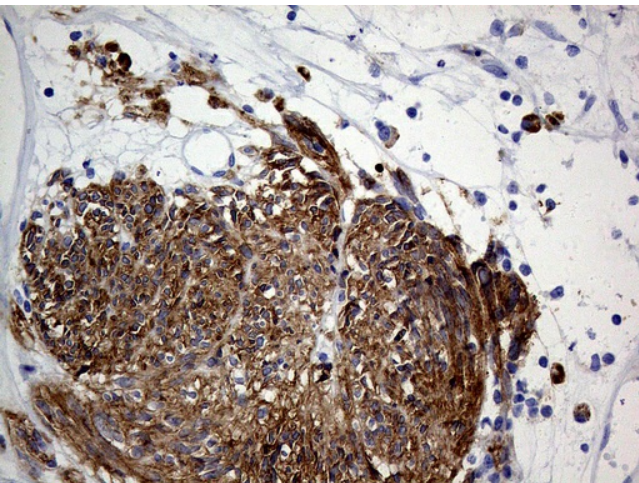
Immunohistochemical staining of paraffin-embedded Human embryonic brain cortex tissue using anti-ANO1 mouse monoclonal antibody. (Heat-induced epitope retrieval by 1 mM EDTA in 10mM Tris, pH8.5, 120°C for 3min, TA805184)



Immunohistochemical staining of paraffin-embedded Human embryonic cerebellum using anti-ANO1 mouse monoclonal antibody. (Heat-induced epitope retrieval by 1 mM EDTA in 10mM Tris, pH8.5, 120°C for 3min, TA805184)



Immunohistochemical staining of paraffin-embedded Human testicular cancer tissue using anti-ANO1 mouse monoclonal antibody. (Heat-induced epitope retrieval by 1 mM EDTA in 10mM Tris, pH8.5, 120°C for 3min, TA805184)



Immunohistochemical staining of paraffin-embedded Human gastric stromal tumor tissue using anti-ANO1 mouse monoclonal antibody. (Heat-induced epitope retrieval by 1mM EDTA in 10mM Tris buffer (pH8.0) at 120°C for 3min, TA805184) (1:1000)