

Product datasheet for **TA804474**

TCF12 Mouse Monoclonal Antibody [Clone ID: OTI4D6]

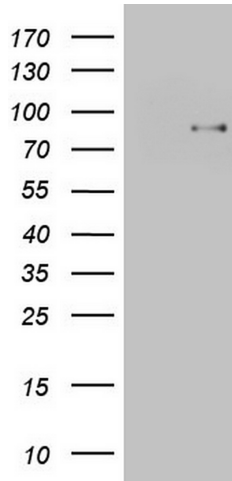
Product data:

Product Type:	Primary Antibodies
Clone Name:	OTI4D6
Applications:	IHC, WB
Recommend Dilution:	WB 1:2000, IHC 1:150
Reactivity:	Human
Host:	Mouse
Isotype:	IgG2b
Clonality:	Monoclonal
Immunogen:	Human recombinant protein fragment corresponding to amino acids 1-250 of human TCF12 (NP_996919) produced in E.coli.
Formulation:	PBS (PH 7.3) containing 1% BSA, 50% glycerol and 0.02% sodium azide.
Concentration:	1 mg/ml
Purification:	Purified from mouse ascites fluids or tissue culture supernatant by affinity chromatography (protein A/G)
Predicted Protein Size:	75.7 kDa
Gene Name:	transcription factor 12
Database Link:	NP_996919 Entrez Gene 6938 Human
Background:	The protein encoded by this gene is a member of the basic helix-loop-helix (bHLH) E-protein family that recognizes the consensus binding site (E-box) CANNTG. This encoded protein is expressed in many tissues, among them skeletal muscle, thymus, B- and T-cells, and may participate in regulating lineage-specific gene expression through the formation of heterodimers with other bHLH E-proteins. Several alternatively spliced transcript variants of this gene have been described, but the full-length nature of some of these variants has not been determined. [provided by RefSeq, Jul 2008]
Synonyms:	bHLHb20; CRS3; HEB; HsT17266; HTF4
Protein Families:	Druggable Genome, Transcription Factors

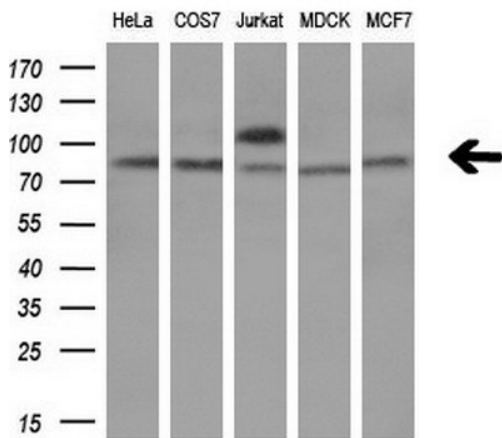


[View online »](#)

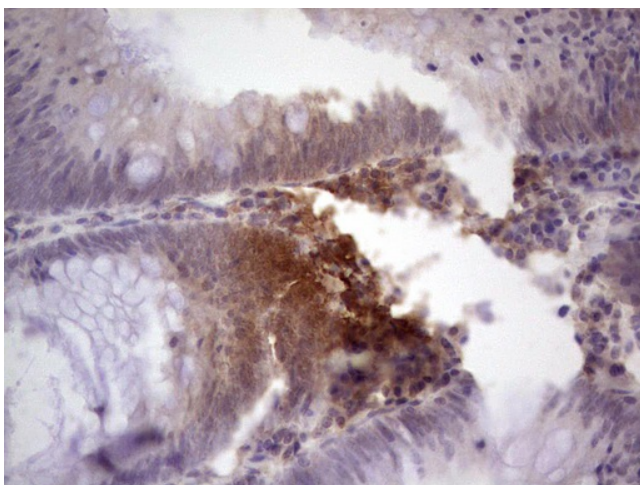
Product images:



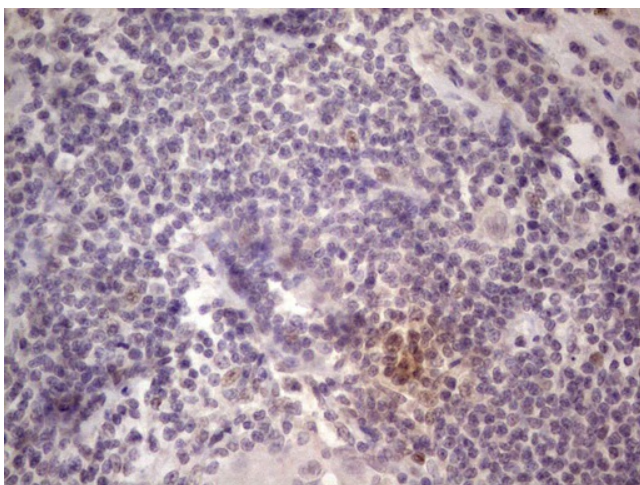
HEK293T cells were transfected with the pCMV6-ENTRY control (Left lane) or pCMV6-ENTRY TCF12 ([RC220164], Right lane) cDNA for 48 hrs and lysed. Equivalent amounts of cell lysates (5 ug per lane) were separated by SDS-PAGE and immunoblotted with anti-TCF12. Positive lysates [LY403720] (100ug) and [LC403720] (20ug) can be purchased separately from OriGene.



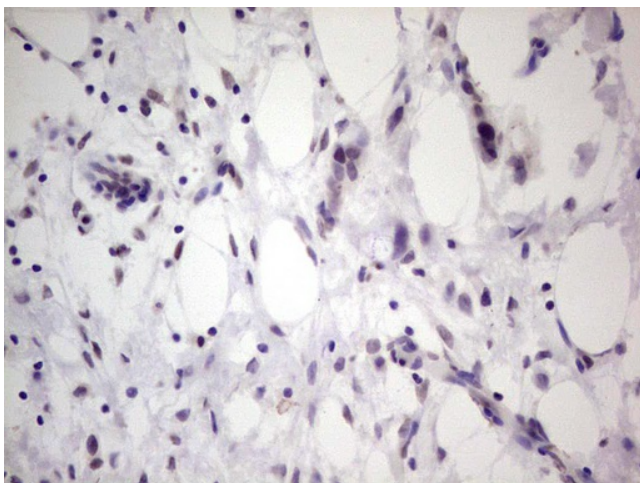
Western blot analysis of extracts (10ug) from 5 different cell lines by using anti-TCF12 monoclonal antibody (1:200).



Immunohistochemical staining of paraffin-embedded Adenocarcinoma of Human colon tissue using anti-TCF12 mouse monoclonal antibody. (Heat-induced epitope retrieval by 1 mM EDTA in 10mM Tris, pH8.5, 120°C for 3min, TA804474)



Immunohistochemical staining of paraffin-embedded Carcinoma of Human lung tissue using anti-TCF12 mouse monoclonal antibody. (Heat-induced epitope retrieval by 1 mM EDTA in 10mM Tris, pH8.5, 120°C for 3min, TA804474)



Immunohistochemical staining of paraffin-embedded Human lymph node tissue within the normal limits using anti-TCF12 mouse monoclonal antibody. (Heat-induced epitope retrieval by 1 mM EDTA in 10mM Tris, pH8.5, 120°C for 3min, TA804474)