

Product datasheet for **TA803480**

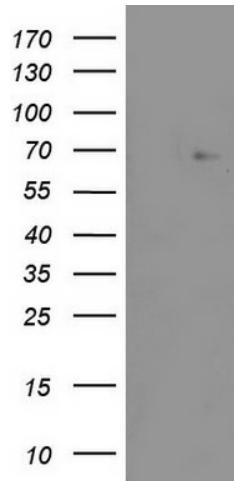
ZNF286 (ZNF286A) Mouse Monoclonal Antibody [Clone ID: OTI7D2]

Product data:

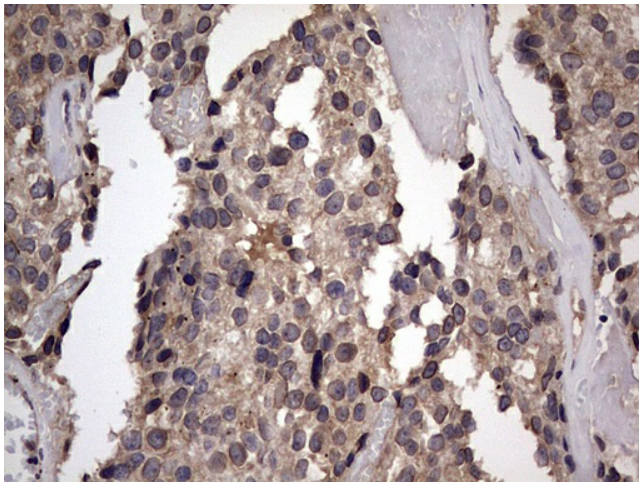
Product Type:	Primary Antibodies
Clone Name:	OTI7D2
Applications:	IHC, WB
Recommend Dilution:	WB 1:2000
Reactivity:	Human
Host:	Mouse
Isotype:	IgG1
Clonality:	Monoclonal
Immunogen:	Human recombinant protein fragment corresponding to amino acids 1-252 of human ZNF286A (NP_065703) produced in E.coli.
Formulation:	PBS (PH 7.3) containing 1% BSA, 50% glycerol and 0.02% sodium azide.
Concentration:	1 mg/ml
Purification:	Purified from mouse ascites fluids or tissue culture supernatant by affinity chromatography (protein A/G)
Gene Name:	zinc finger protein 286A
Database Link:	NP_065703 Entrez Gene 57335 Human
Synonyms:	ZNF286
Protein Families:	Transcription Factors



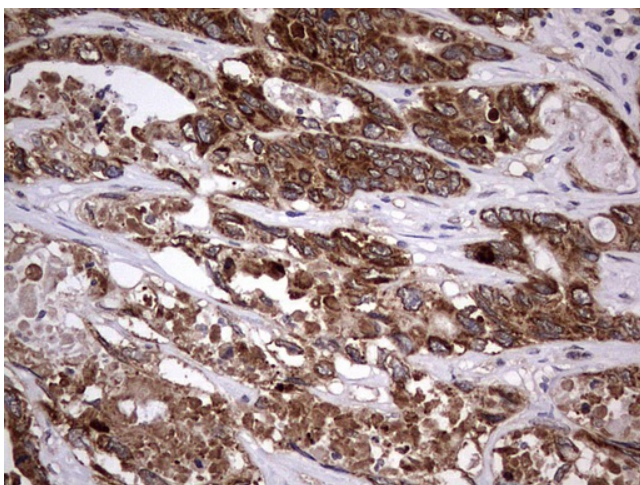
[View online »](#)

Product images:

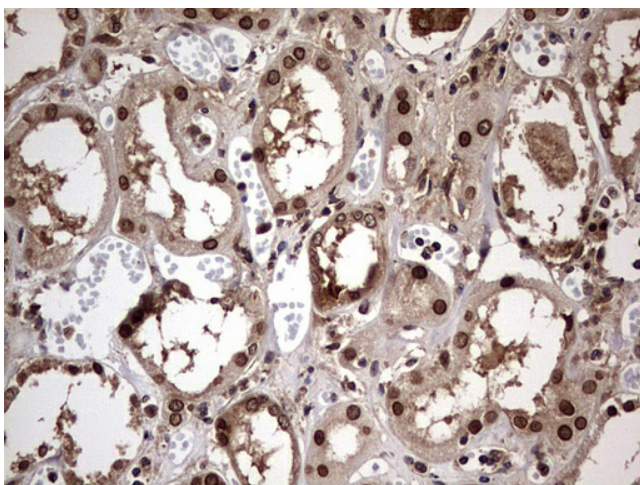
HEK293T cells were transfected with the pCMV6-ENTRY control (Left lane) or pCMV6-ENTRY ZNF286A ([RC216382], Right lane) cDNA for 48 hrs and lysed. Equivalent amounts of cell lysates (5 ug per lane) were separated by SDS-PAGE and immunoblotted with anti-ZNF286A. Positive lysates [LY412314] (100ug) and [LC412314] (20ug) can be purchased separately from OriGene.



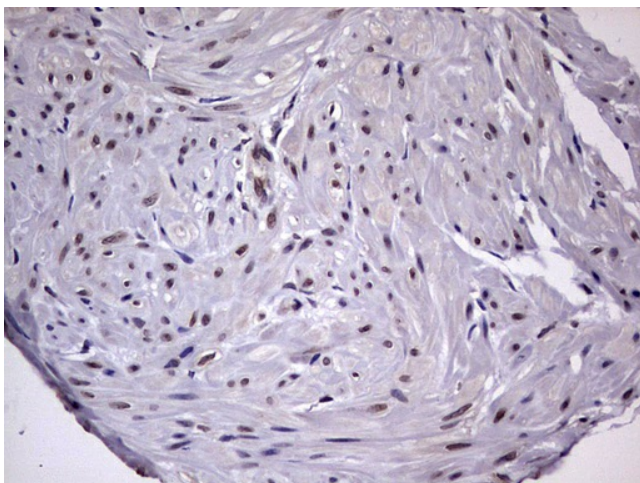
Immunohistochemical staining of paraffin-embedded Adenocarcinoma of Human breast tissue using anti-ZNF286A mouse monoclonal antibody. (TA803480) Dilution: 1:150



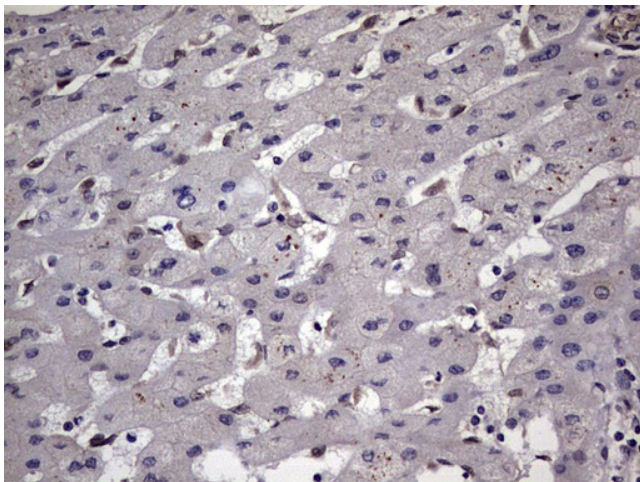
Immunohistochemical staining of paraffin-embedded Adenocarcinoma of Human colon tissue using anti-ZNF286A mouse monoclonal antibody. (TA803480) Dilution: 1:150



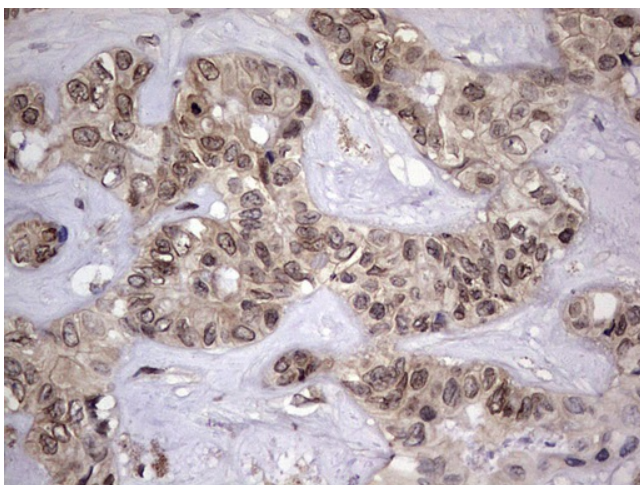
Immunohistochemical staining of paraffin-embedded Human Kidney tissue within the normal limits using anti-ZNF286A mouse monoclonal antibody. (TA803480) Dilution: 1:150



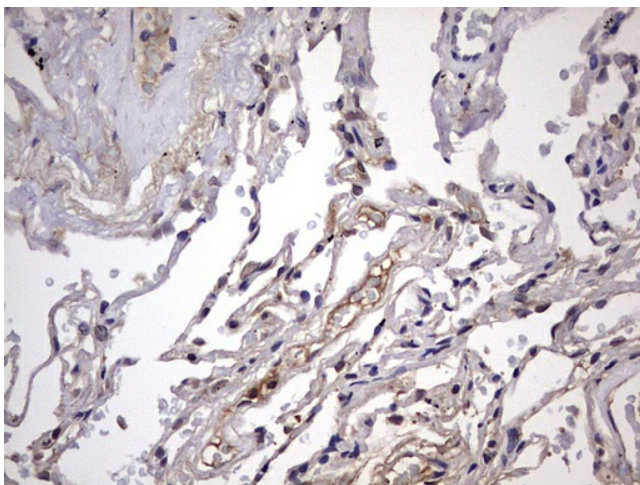
Immunohistochemical staining of paraffin-embedded Carcinoma of Human kidney tissue using anti-ZNF286A mouse monoclonal antibody. (TA803480) Dilution: 1:150



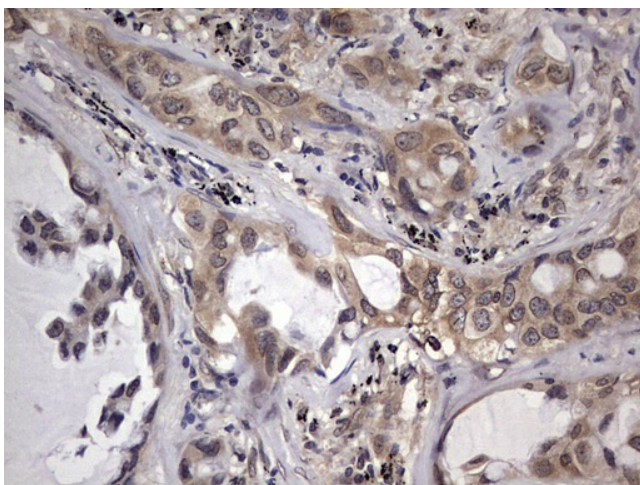
Immunohistochemical staining of paraffin-embedded Human liver tissue within the normal limits using anti-ZNF286A mouse monoclonal antibody. (TA803480) Dilution: 1:150



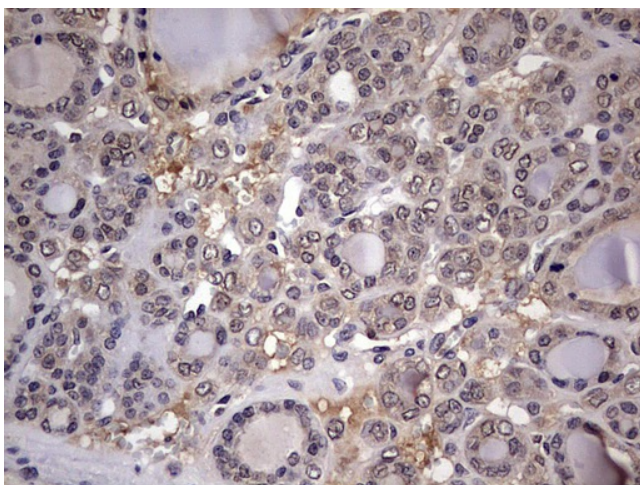
Immunohistochemical staining of paraffin-embedded Carcinoma of Human liver tissue using anti-ZNF286A mouse monoclonal antibody. (TA803480) Dilution: 1:150



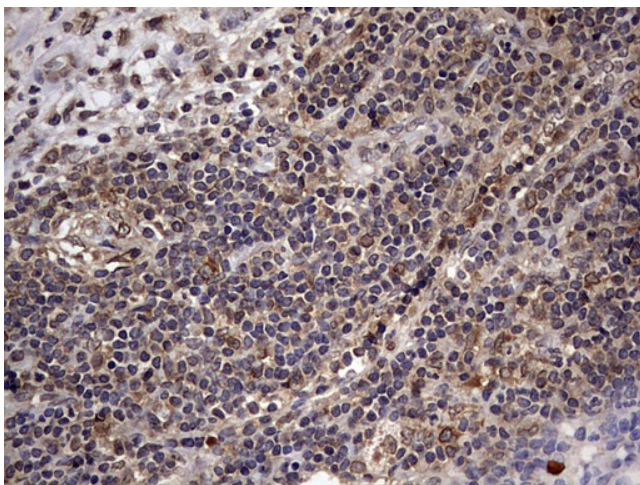
Immunohistochemical staining of paraffin-embedded Human lung tissue within the normal limits using anti-ZNF286A mouse monoclonal antibody. (TA803480) Dilution: 1:150



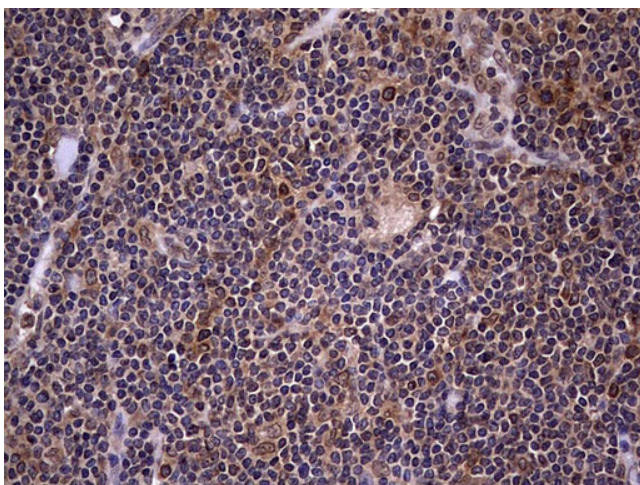
Immunohistochemical staining of paraffin-embedded Carcinoma of Human lung tissue using anti-ZNF286A mouse monoclonal antibody. (TA803480) Dilution: 1:150



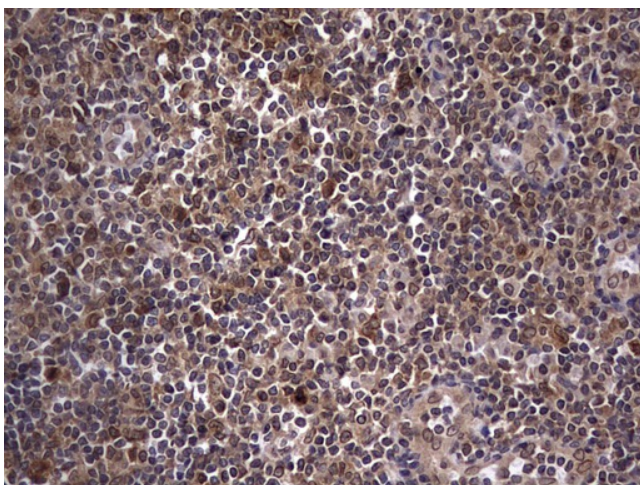
Immunohistochemical staining of paraffin-embedded Carcinoma of Human thyroid tissue using anti-ZNF286A mouse monoclonal antibody. (TA803480) Dilution: 1:150



Immunohistochemical staining of paraffin-embedded Human lymph node tissue within the normal limits using anti-ZNF286A mouse monoclonal antibody. (TA803480) Dilution: 1:150



Immunohistochemical staining of paraffin-embedded Human lymphoma tissue using anti-ZNF286A mouse monoclonal antibody. (TA803480) Dilution: 1:150



Immunohistochemical staining of paraffin-embedded Human tonsil within the normal limits using anti-ZNF286A mouse monoclonal antibody. (TA803480) Dilution: 1:150