

Product datasheet for **TA802284**

TGIF (TGIF1) Mouse Monoclonal Antibody [Clone ID: OTI1B12]

Product data:

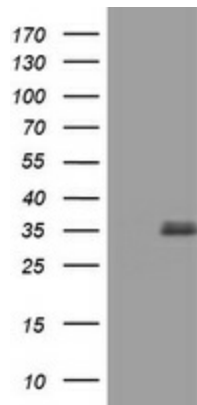
Product Type:	Primary Antibodies
Clone Name:	OTI1B12
Applications:	IHC, WB
Recommend Dilution:	WB 1:2000, IHC 1:150
Reactivity:	Human
Host:	Mouse
Isotype:	IgG1
Clonality:	Monoclonal
Immunogen:	Full length human recombinant protein of human TGIF1 (NP_775300) produced in E.coli.
Formulation:	PBS (PH 7.3) containing 1% BSA, 50% glycerol and 0.02% sodium azide.
Concentration:	1 mg/ml
Purification:	Purified from mouse ascites fluids or tissue culture supernatant by affinity chromatography (protein A/G)
Predicted Protein Size:	29.6 kDa
Gene Name:	TGFB induced factor homeobox 1
Database Link:	NP_775300 Entrez Gene 7050 Human
Background:	The protein encoded by this gene is a member of the three-amino acid loop extension (TALE) superclass of atypical homeodomains. TALE homeobox proteins are highly conserved transcription regulators. This particular homeodomain binds to a previously characterized retinoid X receptor responsive element from the cellular retinol-binding protein II promoter. In addition to its role in inhibiting 9-cis-retinoic acid-dependent RXR alpha transcription activation of the retinoic acid responsive element, the protein is an active transcriptional co-repressor of SMAD2 and may participate in the transmission of nuclear signals during development and in the adult. Mutations in this gene are associated with holoprosencephaly type 4, which is a structural anomaly of the brain. Alternative splicing has been observed at this locus and eight variants, encoding four distinct isoforms, are described. [provided by RefSeq, Jul 2008]
Synonyms:	HPE4; TGIF



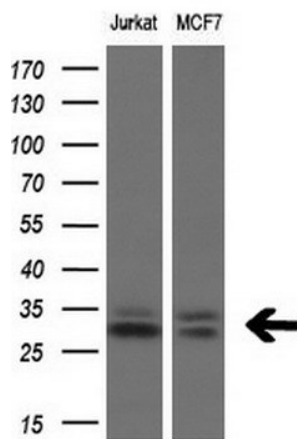
[View online »](#)

Protein Families: Druggable Genome, Stem cell - Pluripotency, Stem cell relevant signaling - TGFb/BMP signaling pathway, Transcription Factors

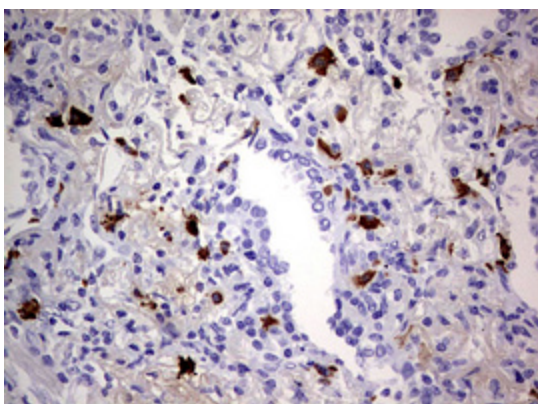
Product images:



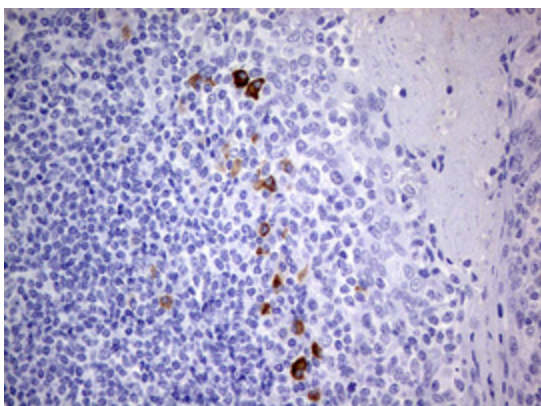
HEK293T cells were transfected with the pCMV6-ENTRY control (Left lane) or pCMV6-ENTRY TGIF1 ([RC201549], Right lane) cDNA for 48 hrs and lysed. Equivalent amounts of cell lysates (5 ug per lane) were separated by SDS-PAGE and immunoblotted with anti-TGIF1. Positive lysates [LY406653] (100ug) and [LC406653] (20ug) can be purchased separately from OriGene.



Western blot analysis of extracts (10ug) from 2 different cell lines by using anti-TGIF1 monoclonal antibody at 1:200 dilution.



Immunohistochemical staining of paraffin-embedded Carcinoma of Human lung tissue using anti-TGIF1 mouse monoclonal antibody. (Heat-induced epitope retrieval by 10mM citric buffer, pH6.0, 120°C for 3min, TA802284)



Immunohistochemical staining of paraffin-embedded Human tonsil within the normal limits using anti-TGIF1 mouse monoclonal antibody. (Heat-induced epitope retrieval by 10mM citric buffer, pH6.0, 120°C for 3min, TA802284)