

Product datasheet for TA800490

PPT1 Mouse Monoclonal Antibody [Clone ID: OTI1A10]

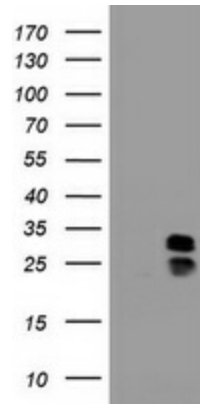
Product data:

Product Type:	Primary Antibodies
Clone Name:	OTI1A10
Applications:	IHC, WB
Recommend Dilution:	WB 1:2000, IHC 1:150
Reactivity:	Human, Monkey, Dog
Host:	Mouse
Isotype:	IgG2b
Clonality:	Monoclonal
Immunogen:	Human recombinant protein fragment corresponding to amino acids 100-306 of human PPT1 (NP_000301) produced in E.coli.
Formulation:	PBS (PH 7.3) containing 1% BSA, 50% glycerol and 0.02% sodium azide.
Concentration:	1 mg/ml
Purification:	Purified from mouse ascites fluids or tissue culture supernatant by affinity chromatography (protein A/G)
Predicted Protein Size:	31.2 kDa
Gene Name:	palmitoyl-protein thioesterase 1
Database Link:	NP_000301 Entrez Gene 475316 DogEntrez Gene 693377 MonkeyEntrez Gene 5538 Human
Background:	The protein encoded by this gene is a small glycoprotein involved in the catabolism of lipid-modified proteins during lysosomal degradation. The encoded enzyme removes thioester-linked fatty acyl groups such as palmitate from cysteine residues. Defects in this gene are a cause of infantile neuronal ceroid lipofuscinosis 1 (CLN1, or INCL) and neuronal ceroid lipofuscinosis 4 (CLN4). Two transcript variants encoding different isoforms have been found for this gene. [provided by RefSeq, Dec 2008]
Synonyms:	CLN1; INCL; PPT
Protein Families:	Druggable Genome
Protein Pathways:	Fatty acid elongation in mitochondria, Lysosome, Metabolic pathways

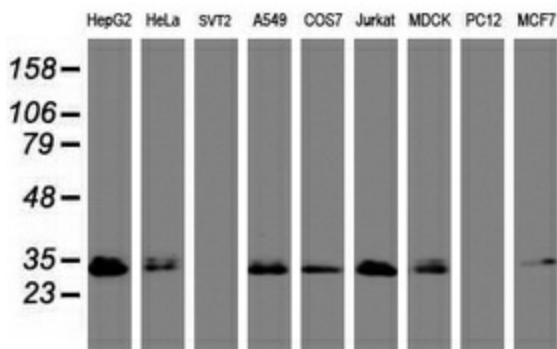


[View online »](#)

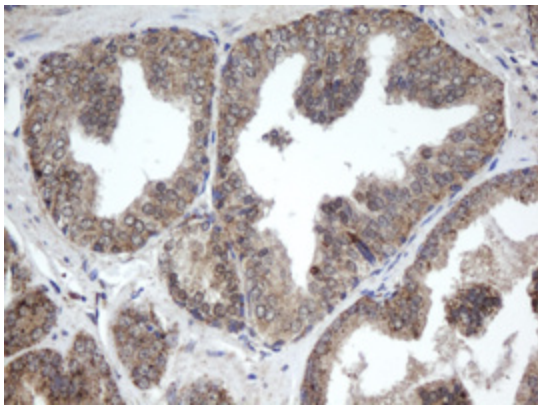
Product images:



HEK293T cells were transfected with the pCMV6-ENTRY control (Left lane) or pCMV6-ENTRY PPT1 ([RC203278], Right lane) cDNA for 48 hrs and lysed. Equivalent amounts of cell lysates (5 ug per lane) were separated by SDS-PAGE and immunoblotted with anti-PPT1. Positive lysates [LY400121] (100ug) and [LC400121] (20ug) can be purchased separately from OriGene.



Western blot analysis of extracts (35ug) from 9 different cell lines by using anti-PPT1 monoclonal antibody (HepG2: human; HeLa: human; SVT2: mouse; A549: human; COS7: monkey; Jurkat: human; MDCK: canine; PC12: rat; MCF7: human).



Immunohistochemical staining of paraffin-embedded Carcinoma of Human prostate tissue using anti-PPT1 mouse monoclonal antibody. (Heat-induced epitope retrieval by 10mM citric buffer, pH6.0, 100°C for 10min, TA800490)