

Product datasheet for **TA800382**

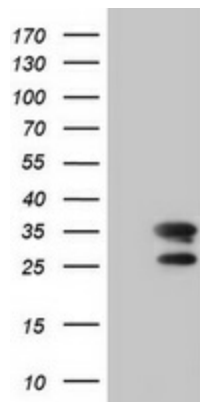
SEN1 (MORF4) Mouse Monoclonal Antibody [Clone ID: OTI1B12]

Product data:

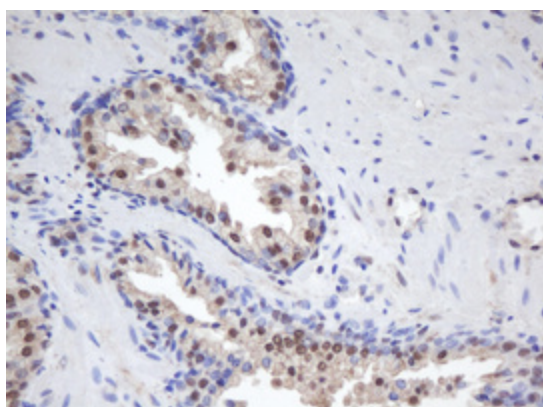
Product Type:	Primary Antibodies
Clone Name:	OTI1B12
Applications:	IHC, WB
Recommend Dilution:	WB 1:2000, IHC 1:150
Reactivity:	Human
Host:	Mouse
Isotype:	IgG1
Clonality:	Monoclonal
Immunogen:	Human recombinant protein fragment corresponding to amino acids 1-255 of human MORF4 (NP_006783) produced in E.coli.
Formulation:	PBS (PH 7.3) containing 1% BSA, 50% glycerol and 0.02% sodium azide.
Concentration:	1 mg/ml
Purification:	Purified from mouse ascites fluids or tissue culture supernatant by affinity chromatography (protein A/G)
Predicted Protein Size:	26.6 kDa
Gene Name:	mortality factor 4 (pseudogene)
Database Link:	NP_006783 Entrez Gene 10934 Human
Background:	Cellular senescence, the terminal nondividing state that normal cells enter following completion of their proliferative potential, is the dominant phenotype in hybrids of normal and immortal cells. Fusions of immortal human cell lines with each other have led to their assignment to 1 of several complementation groups. MORF4 is a gene on chromosome 4 that induces a senescent-like phenotype in cell lines assigned to complementation group B. [supplied by OMIM]
Synonyms:	1; cellular; CSR; CSRB; mortality factor 4; SEN; SEN1; senescence (cellular)-related 1; senescence-related
Protein Families:	Transcription Factors



[View online »](#)

Product images:

HEK293T cells were transfected with the pCMV6-ENTRY control (Left lane) or pCMV6-ENTRY MORF4 ([RC217344], Right lane) cDNA for 48 hrs and lysed. Equivalent amounts of cell lysates (5 ug per lane) were separated by SDS-PAGE and immunoblotted with anti-MORF4.



Immunohistochemical staining of paraffin-embedded Human prostate tissue within the normal limits using anti-MORF4 mouse monoclonal antibody. (Heat-induced epitope retrieval by 10mM citric buffer, pH6.0, 100°C for 10min, TA800382)