

Product datasheet for TA800160

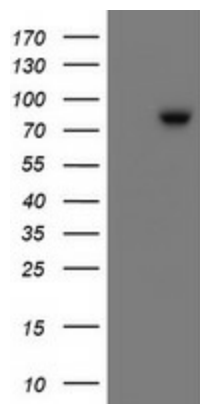
SnoN (SKIL) Mouse Monoclonal Antibody [Clone ID: OTI3F6]

Product data:

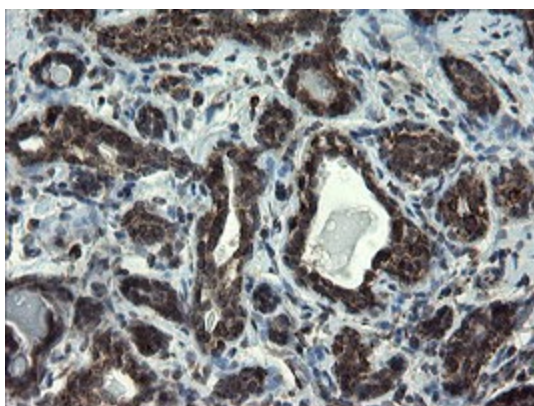
| | |
|-------------------------|---|
| Product Type: | Primary Antibodies |
| Clone Name: | OTI3F6 |
| Applications: | IHC, WB |
| Recommend Dilution: | WB 1:500~2000, IHC 1:150 |
| Reactivity: | Human |
| Host: | Mouse |
| Isotype: | IgG1 |
| Clonality: | Monoclonal |
| Immunogen: | Human recombinant protein fragment corresponding to amino acids 307-684 of human SKIL (NP_005405) produced in E.coli. |
| Formulation: | PBS (PH 7.3) containing 1% BSA, 50% glycerol and 0.02% sodium azide. |
| Concentration: | 1 mg/ml |
| Purification: | Purified from mouse ascites fluids or tissue culture supernatant by affinity chromatography (protein A/G) |
| Predicted Protein Size: | 76.8 kDa |
| Gene Name: | SKI-like proto-oncogene |
| Database Link: | NP_005405 Entrez Gene 6498 Human |
| Synonyms: | SNO; SnoA; Snol; SnoN |
| Protein Families: | Druggable Genome, Transcription Factors |



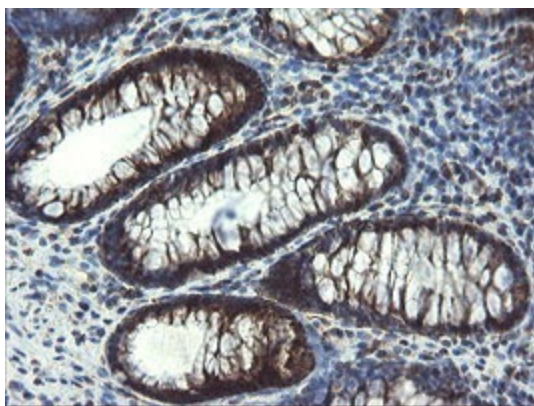
[View online »](#)

Product images:

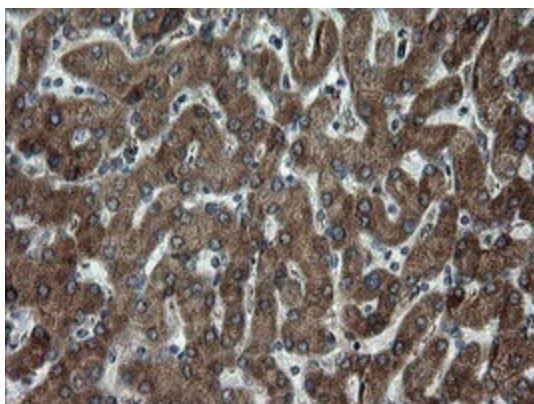
HEK293T cells were transfected with the pCMV6-ENTRY control (Left lane) or pCMV6-ENTRY SKIL ([RC209251], Right lane) cDNA for 48 hrs and lysed. Equivalent amounts of cell lysates (5 ug per lane) were separated by SDS-PAGE and immunoblotted with anti-SKIL. Positive lysates [LY417307] (100ug) and [LC417307] (20ug) can be purchased separately from OriGene.



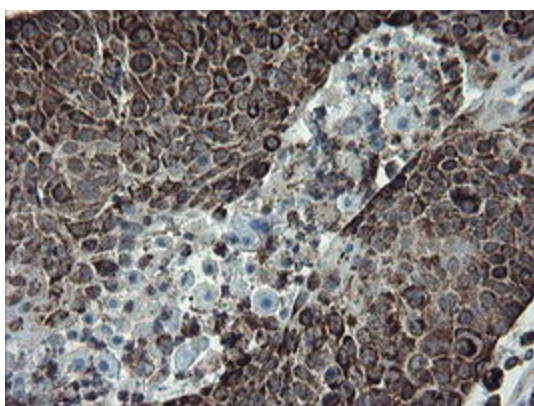
Immunohistochemical staining of paraffin-embedded Human breast tissue within the normal limits using anti-SKIL mouse monoclonal antibody. (Heat-induced epitope retrieval by 10mM citric buffer, pH6.0, 100°C for 10min, TA800160)



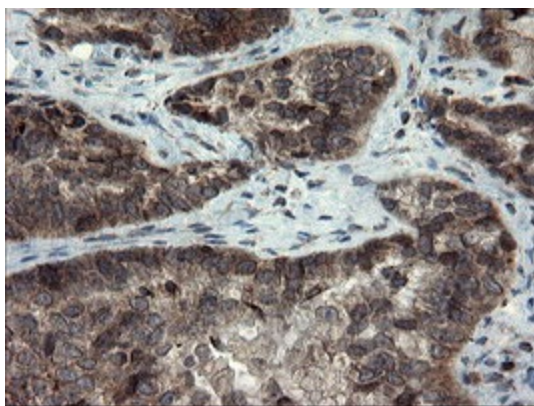
Immunohistochemical staining of paraffin-embedded Human colon tissue within the normal limits using anti-SKIL mouse monoclonal antibody. (Heat-induced epitope retrieval by 10mM citric buffer, pH6.0, 100°C for 10min, TA800160)



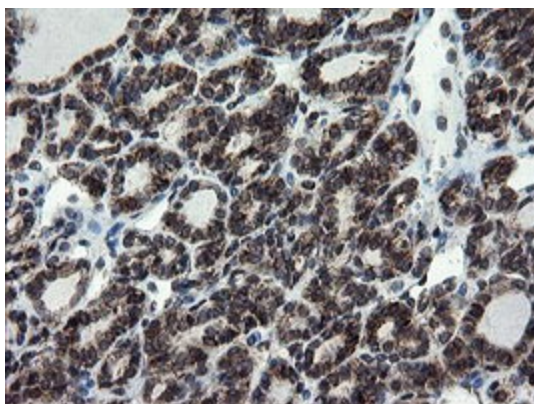
Immunohistochemical staining of paraffin-embedded Human liver tissue within the normal limits using anti-SKIL mouse monoclonal antibody. (Heat-induced epitope retrieval by 10mM citric buffer, pH6.0, 100°C for 10min, TA800160)



Immunohistochemical staining of paraffin-embedded Carcinoma of Human lung tissue using anti-SKIL mouse monoclonal antibody. (Heat-induced epitope retrieval by 10mM citric buffer, pH6.0, 100°C for 10min, TA800160)



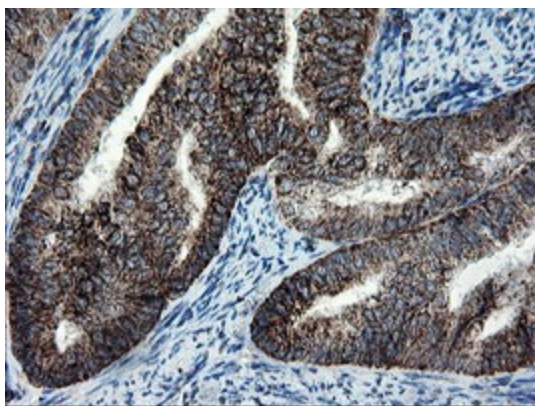
Immunohistochemical staining of paraffin-embedded Adenocarcinoma of Human ovary tissue using anti-SKIL mouse monoclonal antibody. (Heat-induced epitope retrieval by 10mM citric buffer, pH6.0, 100°C for 10min, TA800160)



Immunohistochemical staining of paraffin-embedded Carcinoma of Human thyroid tissue using anti-SKIL mouse monoclonal antibody. (Heat-induced epitope retrieval by 10mM citric buffer, pH6.0, 100°C for 10min, TA800160)



Immunohistochemical staining of paraffin-embedded Human endometrium tissue within the normal limits using anti-SKIL mouse monoclonal antibody. (Heat-induced epitope retrieval by 10mM citric buffer, pH6.0, 100°C for 10min, TA800160)



Immunohistochemical staining of paraffin-embedded Adenocarcinoma of Human endometrium tissue using anti-SKIL mouse monoclonal antibody. (Heat-induced epitope retrieval by 10mM citric buffer, pH6.0, 100°C for 10min, TA800160)