

Product datasheet for **TA800048**

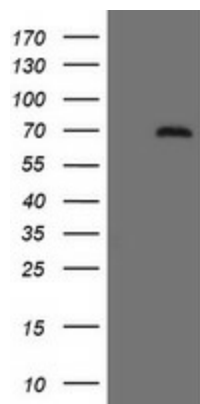
CNOT4 Mouse Monoclonal Antibody [Clone ID: OTI1F10]

Product data:

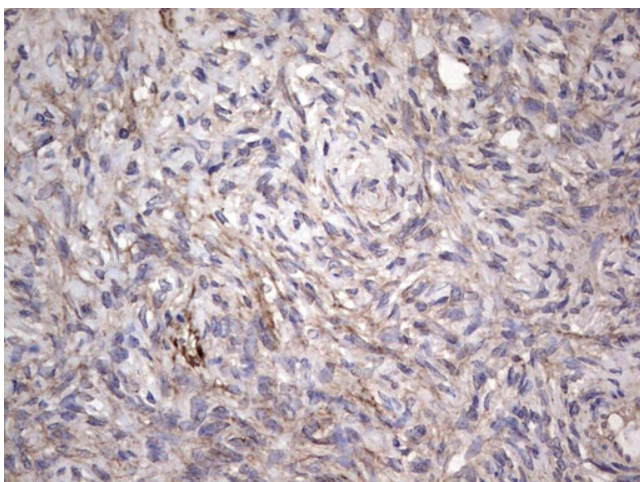
Product Type:	Primary Antibodies
Clone Name:	OTI1F10
Applications:	IHC, WB
Recommend Dilution:	IHC 1:150
Reactivity:	Human
Host:	Mouse
Isotype:	IgG1
Clonality:	Monoclonal
Immunogen:	Human recombinant protein fragment corresponding to amino acids 190-455 of human CNOT4 (NP_037448) produced in E.coli.
Formulation:	PBS (PH 7.3) containing 1% BSA, 50% glycerol and 0.02% sodium azide.
Concentration:	1 mg/ml
Purification:	Purified from mouse ascites fluids or tissue culture supernatant by affinity chromatography (protein A/G)
Predicted Protein Size:	70.2 kDa
Gene Name:	CCR4-NOT transcription complex subunit 4
Database Link:	NP_037448 Entrez Gene 4850 Human
Background:	The protein encoded by this gene is a subunit of the CCR4-NOT complex, a global transcriptional regulator. The encoded protein interacts with CNOT1 and has E3 ubiquitin ligase activity. Several transcript variants encoding different isoforms have been found for this gene. [provided by RefSeq, Jul 2010]
Synonyms:	CLONE243; NOT4; NOT4H
Protein Families:	Druggable Genome, Transcription Factors
Protein Pathways:	RNA degradation



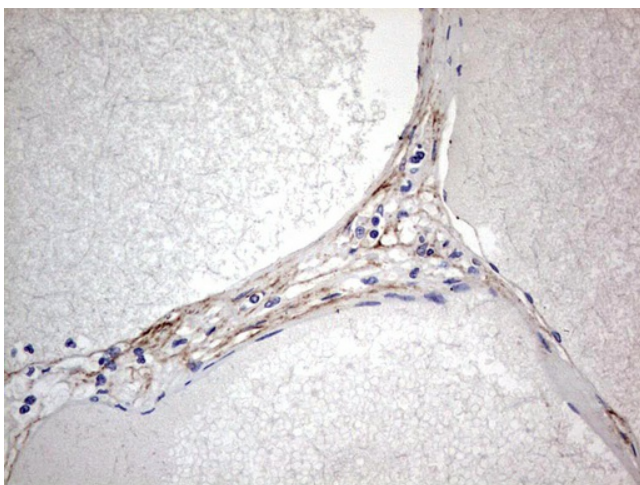
[View online »](#)

Product images:

HEK293T cells were transfected with the pCMV6-ENTRY control (Left lane) or pCMV6-ENTRY CNOT4 [RC217418], Right lane) cDNA for 48 hrs and lysed. Equivalent amounts of cell lysates (5 ug per lane) were separated by SDS-PAGE and immunoblotted with anti-CNOT4. Positive lysates [LY415669] (100ug) and [LC415669] (20ug) can be purchased separately from OriGene.



Immunohistochemical staining of paraffin-embedded Human Ovary tissue within the normal limits using anti-CNOT4 Mouse monoclonal antibody. (TA800048; heat-induced epitope retrieval by 1 mM EDTA in 10mM Tris, pH8.5, 120°C for 3min)



Immunohistochemical staining of paraffin-embedded Human thyroid tissue within the normal limits using anti-CNOT4 Mouse monoclonal antibody. (TA800048; heat-induced epitope retrieval by 1 mM EDTA in 10mM Tris, pH8.5, 120°C for 3min)