

## Product datasheet for TA800036

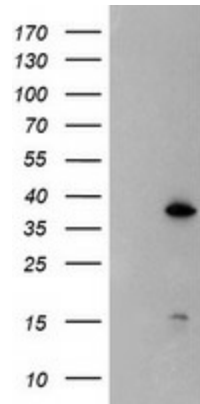
### DPPA4 Mouse Monoclonal Antibody [Clone ID: OTI2F6]

#### Product data:

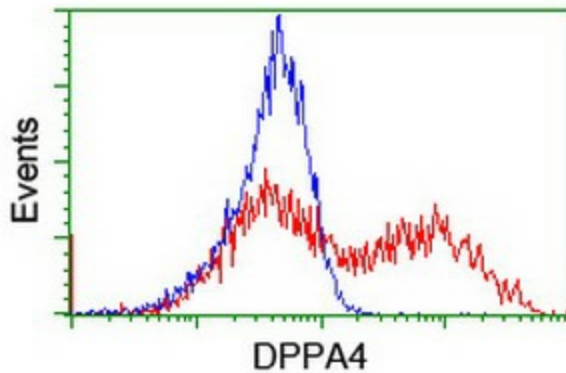
Product Type:	Primary Antibodies
Clone Name:	OTI2F6
Applications:	FC, WB
Recommend Dilution:	WB 1:2000, FLOW 1:100
Reactivity:	Human
Host:	Mouse
Isotype:	IgG1
Clonality:	Monoclonal
Immunogen:	Human recombinant protein fragment corresponding to amino acids 9-254 of human DPPA4 (NP_060659) produced in E.coli.
Formulation:	PBS (PH 7.3) containing 1% BSA, 50% glycerol and 0.02% sodium azide.
Concentration:	1 mg/ml
Purification:	Purified from mouse ascites fluids or tissue culture supernatant by affinity chromatography (protein A/G)
Predicted Protein Size:	33.4 kDa
Gene Name:	developmental pluripotency associated 4
Database Link:	<a href="#">NP_060659</a> <a href="#">Entrez Gene 55211 Human</a>
Synonyms:	2410091M23Rik



[View online »](#)

**Product images:**

HEK293T cells were transfected with the pCMV6-ENTRY control (Left lane) or pCMV6-ENTRY DPPA4 ([RC205999], Right lane) cDNA for 48 hrs and lysed. Equivalent amounts of cell lysates (5 ug per lane) were separated by SDS-PAGE and immunoblotted with anti-DPPA4. Positive lysates [LY413234] (100ug) and [LC413234] (20ug) can be purchased separately from OriGene.



HEK293T cells transfected with either [RC205999] overexpress plasmid (Red) or empty vector control plasmid (Blue) were immunostained by anti-DPPA4 antibody (TA800036), and then analyzed by flow cytometry.