

Product datasheet for **TA800035**

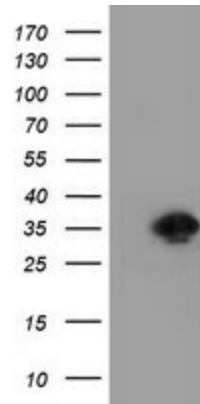
RYBP Mouse Monoclonal Antibody [Clone ID: OTI2H9]

Product data:

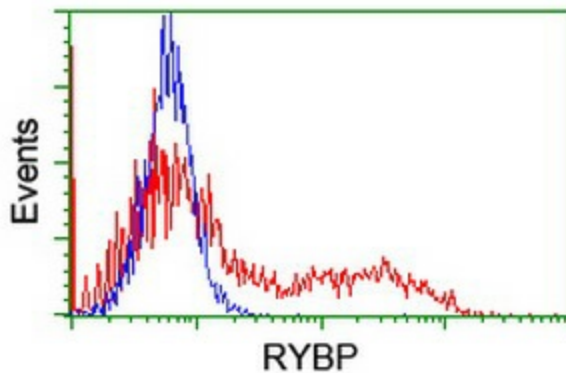
| | |
|--------------------------------|---|
| Product Type: | Primary Antibodies |
| Clone Name: | OTI2H9 |
| Applications: | FC, WB |
| Recommend Dilution: | WB 1:2000, FLOW 1:100 |
| Reactivity: | Human |
| Host: | Mouse |
| Isotype: | IgG1 |
| Clonality: | Monoclonal |
| Immunogen: | Full length human recombinant protein of human RYBP (NP_036366) produced in E.coli. |
| Formulation: | PBS (PH 7.3) containing 1% BSA, 50% glycerol and 0.02% sodium azide. |
| Concentration: | 1 mg/ml |
| Purification: | Purified from mouse ascites fluids or tissue culture supernatant by affinity chromatography (protein A/G) |
| Predicted Protein Size: | 24.6 kDa |
| Gene Name: | RING1 and YY1 binding protein |
| Database Link: | NP_036366 Entrez Gene 23429 Human |
| Synonyms: | AAP1; APAP-1; DEDAF; YEAF1 |
| Protein Families: | Druggable Genome, Transcription Factors |



[View online »](#)

Product images:

HEK293T cells were transfected with the pCMV6-ENTRY control (Left lane) or pCMV6-ENTRY RYBP ([RC206186], Right lane) cDNA for 48 hrs and lysed. Equivalent amounts of cell lysates (5 ug per lane) were separated by SDS-PAGE and immunoblotted with anti-RYBP. Positive lysates [LY415887] (100ug) and [LC415887] (20ug) can be purchased separately from OriGene.



HEK293T cells transfected with either [RC206186] overexpress plasmid (Red) or empty vector control plasmid (Blue) were immunostained by anti-RYBP antibody (TA800035), and then analyzed by flow cytometry.