

## Product datasheet for **TA507377**

### **Siglec 7 (SIGLEC7) Mouse Monoclonal Antibody [Clone ID: OTI1A1]**

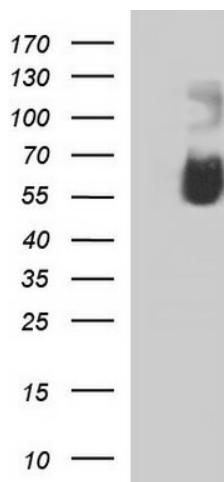
#### **Product data:**

<b>Product Type:</b>	Primary Antibodies
<b>Clone Name:</b>	OTI1A1
<b>Applications:</b>	WB
<b>Recommend Dilution:</b>	WB 1:4000
<b>Reactivity:</b>	Human
<b>Host:</b>	Mouse
<b>Isotype:</b>	IgG1
<b>Clonality:</b>	Monoclonal
<b>Immunogen:</b>	Full length human recombinant protein of human SIGLEC7(NP_057627) produced in HEK293T cell.
<b>Formulation:</b>	PBS (PH 7.3) containing 1% BSA, 50% glycerol and 0.02% sodium azide.
<b>Concentration:</b>	1 mg/ml
<b>Purification:</b>	Purified from mouse ascites fluids or tissue culture supernatant by affinity chromatography (protein A/G)
<b>Predicted Protein Size:</b>	41.1 kDa
<b>Gene Name:</b>	sialic acid binding Ig like lectin 7
<b>Database Link:</b>	<a href="#">NP_057627 Entrez Gene 27036 Human</a>
<b>Synonyms:</b>	AIRM1; CD328; CDw328; D-siglec; p75; QA79; SIGLEC-7; SIGLEC19P; SIGLECP2
<b>Protein Families:</b>	Druggable Genome, ES Cell Differentiation/IPS, Transmembrane



[View online »](#)

## Product images:



HEK293T cells were transfected with the pCMV6-ENTRY control (Left lane) or pCMV6-ENTRY SIGLEC7 ([RC213691], Right lane) cDNA for 48 hrs and lysed. Equivalent amounts of cell lysates (5 ug per lane) were separated by SDS-PAGE and immunoblotted with anti-SIGLEC7. Positive lysates [LY413916] (100ug) and [LC413916] (20ug) can be purchased separately from OriGene.