

Product datasheet for **TA507205**

VEGFB Mouse Monoclonal Antibody [Clone ID: OTI1H9]

Product data:

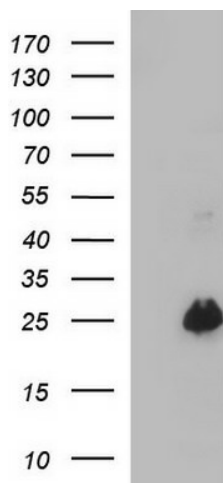
Product Type:	Primary Antibodies
Clone Name:	OTI1H9
Applications:	IF, IHC, WB
Recommend Dilution:	WB 1:4000, IHC 1:150, IF 1:100
Reactivity:	Human
Host:	Mouse
Isotype:	IgG1
Clonality:	Monoclonal
Immunogen:	Full length human recombinant protein of human VEGFB(NP_003368) produced in HEK293T cell.
Formulation:	PBS (PH 7.3) containing 1% BSA, 50% glycerol and 0.02% sodium azide.
Concentration:	1 mg/ml
Purification:	Purified from mouse ascites fluids or tissue culture supernatant by affinity chromatography (protein A/G)
Predicted Protein Size:	21.4 kDa
Gene Name:	vascular endothelial growth factor B
Database Link:	NP_003368 Entrez Gene 7423 Human
Background:	This gene encodes a member of the PDGF (platelet-derived growth factor)/VEGF (vascular endothelial growth factor) family. The VEGF family members regulate the formation of blood vessels and are involved in endothelial cell physiology. This member is a ligand for VEGFR-1 (vascular endothelial growth factor receptor 1) and NRP-1 (neuropilin-1). Studies in mice showed that this gene was co-expressed with nuclear-encoded mitochondrial genes and the encoded protein specifically controlled endothelial uptake of fatty acids. Alternatively spliced transcript variants encoding distinct isoforms have been identified. [provided by RefSeq, Sep 2011]
Synonyms:	VEGFL; VRF
Protein Families:	Druggable Genome, Secreted Protein



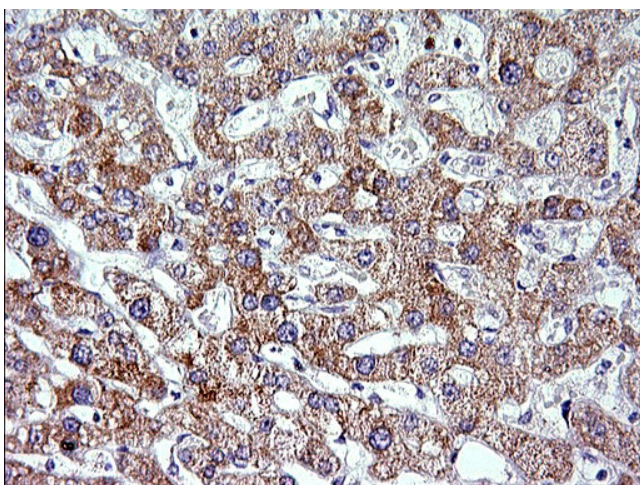
[View online »](#)

Protein Pathways: Bladder cancer, Cytokine-cytokine receptor interaction, Focal adhesion, mTOR signaling pathway, Pancreatic cancer, Pathways in cancer, Renal cell carcinoma

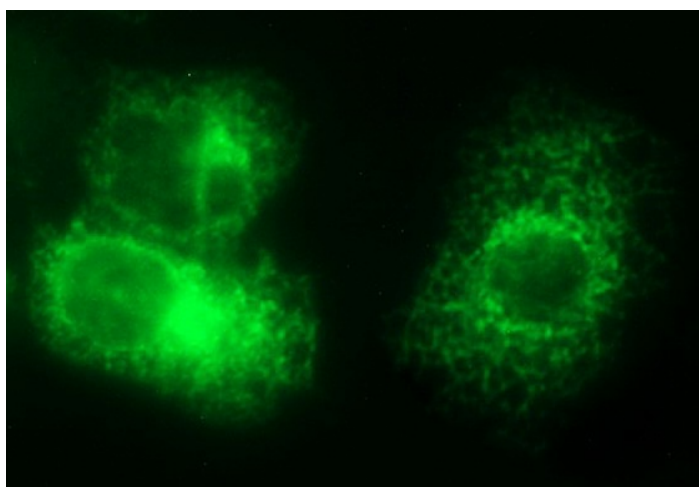
Product images:



HEK293T cells were transfected with the pCMV6-ENTRY control (Left lane) or pCMV6-ENTRY VEGFB ([RC202426], Right lane) cDNA for 48 hrs and lysed. Equivalent amounts of cell lysates (5 ug per lane) were separated by SDS-PAGE and immunoblotted with anti-VEGFB. Positive lysates [LY418732] (100ug) and [LC418732] (20ug) can be purchased separately from OriGene.



Immunohistochemical staining of paraffin-embedded Human liver tissue within the normal limits using anti-VEGFB mouse monoclonal antibody. (Heat-induced epitope retrieval by 1 mM EDTA in 10mM Tris, pH8.5, 120°C for 3min, TA507205)



Anti-VEGFB mouse monoclonal antibody (TA507205) immunofluorescent staining of COS7 cells transiently transfected by pCMV6-ENTRY VEGFB ([RC202426]).