

Product datasheet for **TA506979**

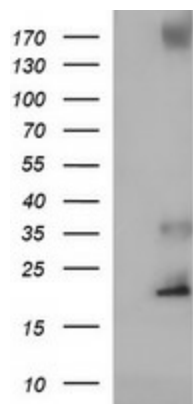
CYBC1 Mouse Monoclonal Antibody [Clone ID: OTI3B5]

Product data:

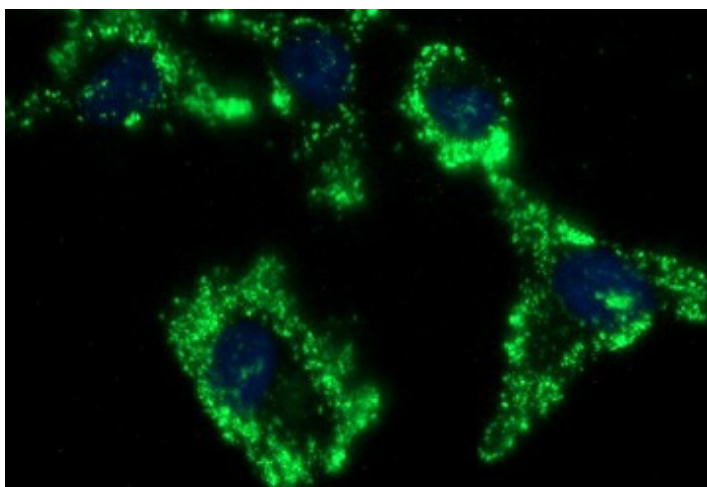
Product Type:	Primary Antibodies
Clone Name:	OTI3B5
Applications:	IF, WB
Recommend Dilution:	WB 1:4000
Reactivity:	Human
Host:	Mouse
Isotype:	IgG1
Clonality:	Monoclonal
Immunogen:	Full length human recombinant protein of human C17orf62(NP_001028218) produced in HEK293T cell.
Formulation:	PBS (PH 7.3) containing 1% BSA, 50% glycerol and 0.02% sodium azide.
Concentration:	1 mg/ml
Purification:	Purified from mouse ascites fluids or tissue culture supernatant by affinity chromatography (protein A/G)
Predicted Protein Size:	20.6 kDa
Gene Name:	cytochrome b-245 chaperone 1
Database Link:	NP_001028218 Entrez Gene 79415 Human
Synonyms:	FLJ00406; FLJ90469; MGC4368
Protein Families:	Transmembrane



[View online »](#)

Product images:

HEK293T cells were transfected with the pCMV6-ENTRY control (Left lane) or pCMV6-ENTRY C17orf62 ([RC200883], Right lane) cDNA for 48 hrs and lysed. Equivalent amounts of cell lysates (5 ug per lane) were separated by SDS-PAGE and immunoblotted with anti-C17orf62. Positive lysates [LY422350] (100ug) and [LC422350] (20ug) can be purchased separately from OriGene.



Immunofluorescent staining of HeLa cells using anti-C17orf62 mouse monoclonal antibody (TA506979).