

## Product datasheet for TA506975

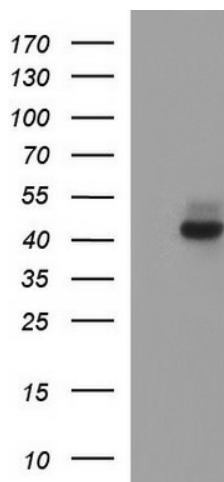
### Necdin (NDN) Mouse Monoclonal Antibody [Clone ID: OTI5D1]

#### Product data:

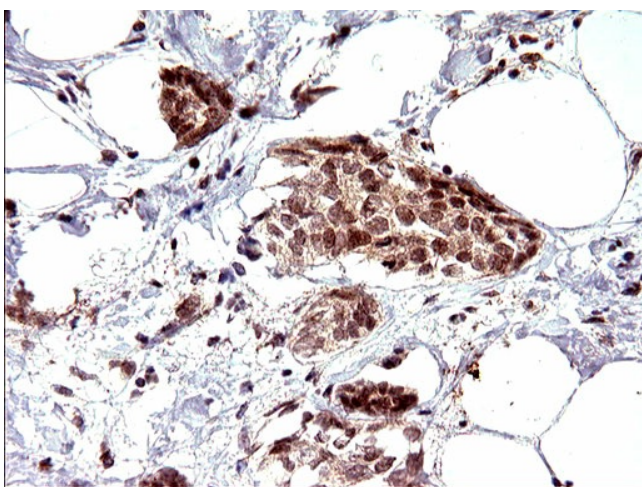
Product Type:	Primary Antibodies
Clone Name:	OTI5D1
Applications:	IF, IHC, WB
Recommend Dilution:	WB 1:4000, IHC 1:150, IF 1:100
Reactivity:	Human
Host:	Mouse
Isotype:	IgG2a
Clonality:	Monoclonal
Immunogen:	Full length human recombinant protein of human NDN(NP_002478) produced in HEK293T cell.
Formulation:	PBS (PH 7.3) containing 1% BSA, 50% glycerol and 0.02% sodium azide.
Concentration:	1 mg/ml
Purification:	Purified from mouse ascites fluids or tissue culture supernatant by affinity chromatography (protein A/G)
Predicted Protein Size:	35.9 kDa
Gene Name:	necdin, MAGE family member
Database Link:	<a href="#">NP_002478</a> <a href="#">Entrez Gene 4692</a> <a href="#">Human</a>
Background:	This intronless gene is located in the Prader-Willi syndrome deletion region. It is an imprinted gene and is expressed exclusively from the paternal allele. Studies in mouse suggest that the protein encoded by this gene may suppress growth in postmitotic neurons. [provided by RefSeq, Jul 2008]
Synonyms:	HsT16328; PWCR
Protein Families:	Druggable Genome, Transcription Factors



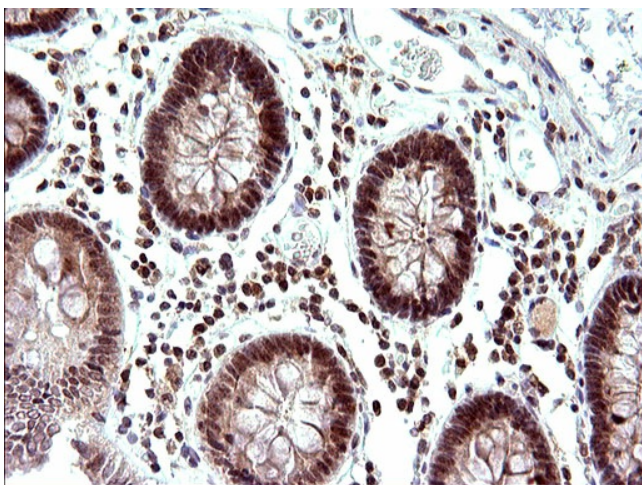
[View online »](#)

**Product images:**

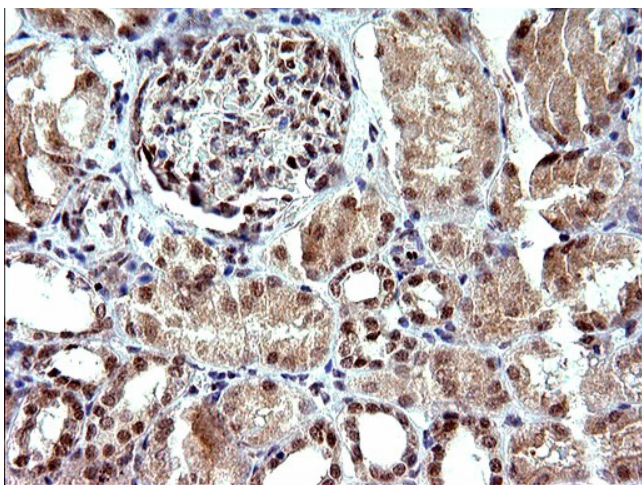
HEK293T cells were transfected with the pCMV6-ENTRY control (Left lane) or pCMV6-ENTRY NDN ([RC200448], Right lane) cDNA for 48 hrs and lysed. Equivalent amounts of cell lysates (5 ug per lane) were separated by SDS-PAGE and immunoblotted with anti-NDN. Positive lysates [LY400887] (100ug) and [LC400887] (20ug) can be purchased separately from OriGene.



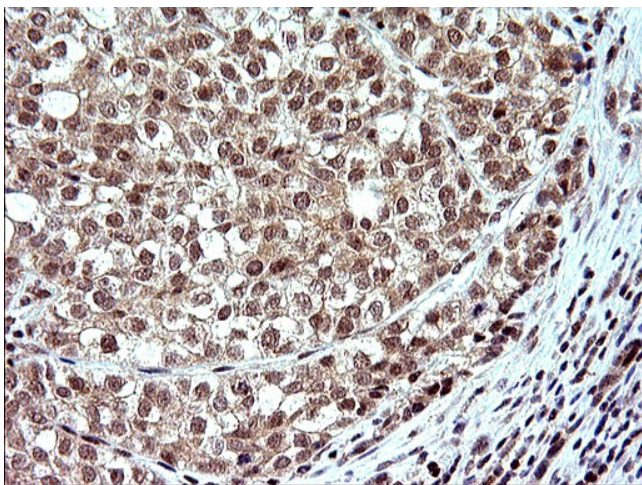
Immunohistochemical staining of paraffin-embedded Adenocarcinoma of Human breast tissue using anti-NDN mouse monoclonal antibody. (Heat-induced epitope retrieval by 10mM citric buffer, pH6.0, 120°C for 3min, TA506975)



Immunohistochemical staining of paraffin-embedded Human colon tissue within the normal limits using anti-NDN mouse monoclonal antibody. (Heat-induced epitope retrieval by 10mM citric buffer, pH6.0, 120°C for 3min, TA506975)

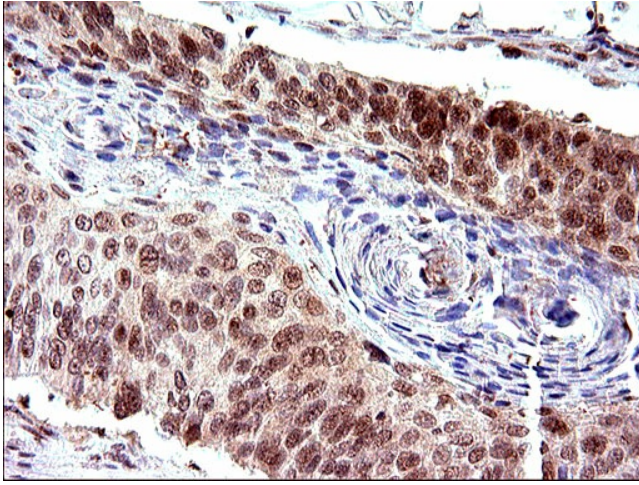


Immunohistochemical staining of paraffin-embedded Human Kidney tissue within the normal limits using anti-NDN mouse monoclonal antibody. (Heat-induced epitope retrieval by 10mM citric buffer, pH6.0, 120°C for 3min, TA506975)

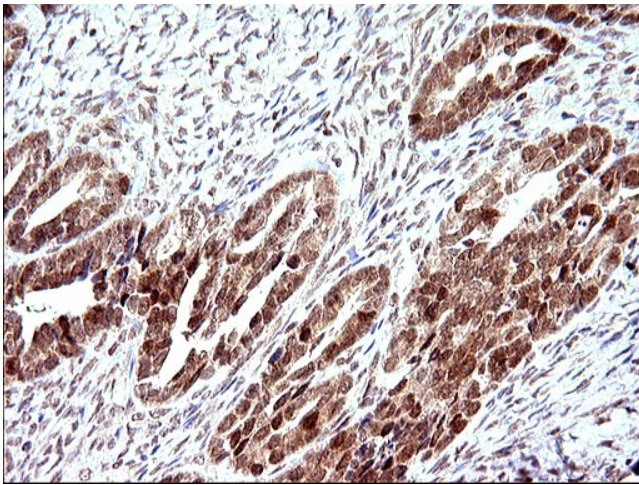


Immunohistochemical staining of paraffin-embedded Carcinoma of Human liver tissue using anti-NDN mouse monoclonal antibody. (Heat-induced epitope retrieval by 10mM citric buffer, pH6.0, 120°C for 3min, TA506975)

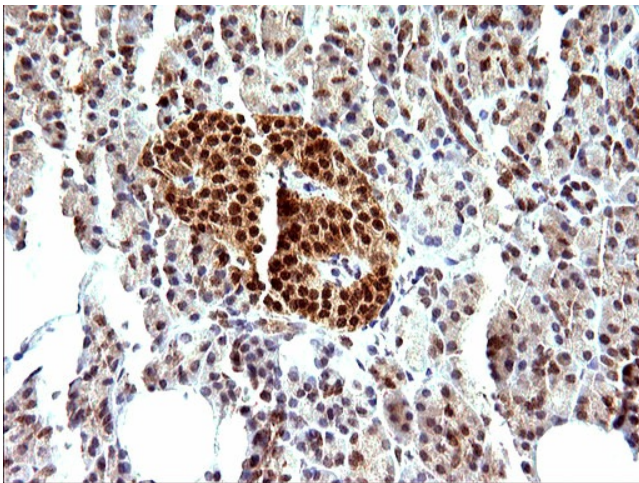




Immunohistochemical staining of paraffin-embedded Carcinoma of Human lung tissue using anti-NDN mouse monoclonal antibody. (Heat-induced epitope retrieval by 10mM citric buffer, pH6.0, 120°C for 3min, TA506975)

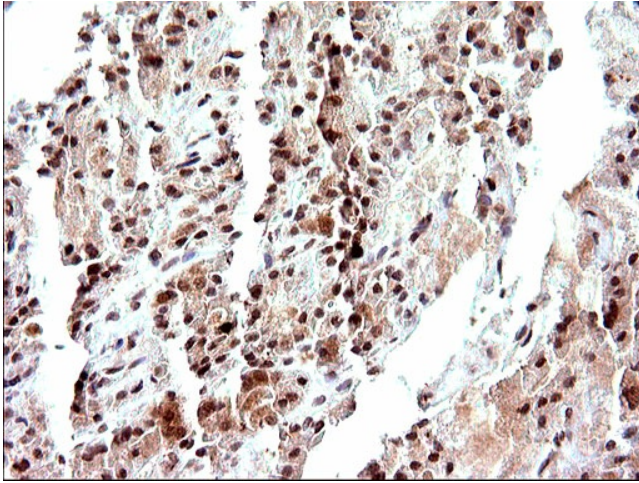


Immunohistochemical staining of paraffin-embedded Adenocarcinoma of Human ovary tissue using anti-NDN mouse monoclonal antibody. (Heat-induced epitope retrieval by 10mM citric buffer, pH6.0, 120°C for 3min, TA506975)

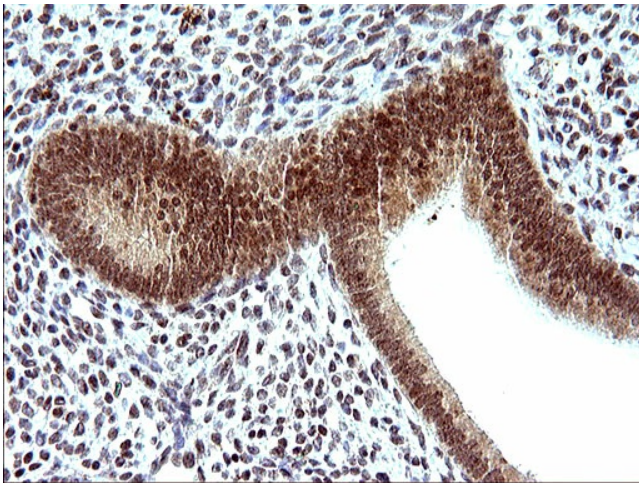


Immunohistochemical staining of paraffin-embedded Human pancreas tissue within the normal limits using anti-NDN mouse monoclonal antibody. (Heat-induced epitope retrieval by 10mM citric buffer, pH6.0, 120°C for 3min, TA506975)

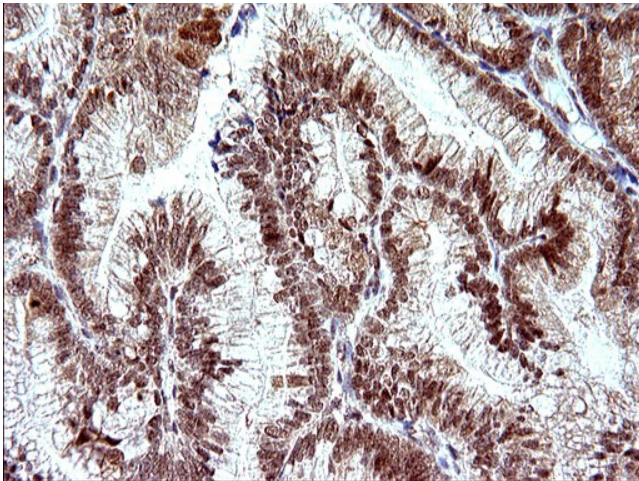




Immunohistochemical staining of paraffin-embedded Carcinoma of Human thyroid tissue using anti-NDN mouse monoclonal antibody. (Heat-induced epitope retrieval by 10mM citric buffer, pH6.0, 120°C for 3min, TA506975)

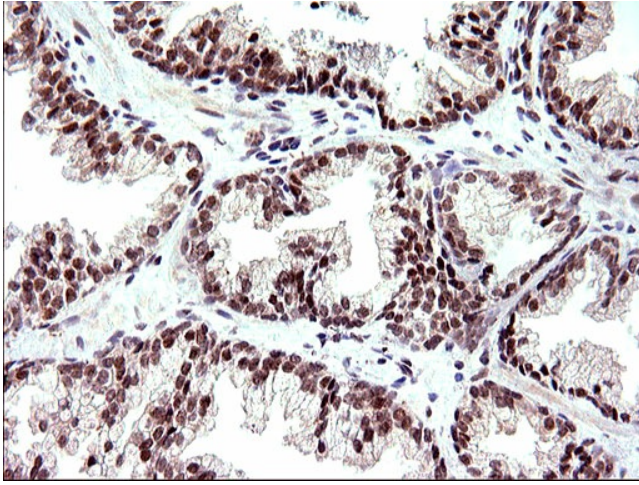


Immunohistochemical staining of paraffin-embedded Human endometrium tissue within the normal limits using anti-NDN mouse monoclonal antibody. (Heat-induced epitope retrieval by 10mM citric buffer, pH6.0, 120°C for 3min, TA506975)

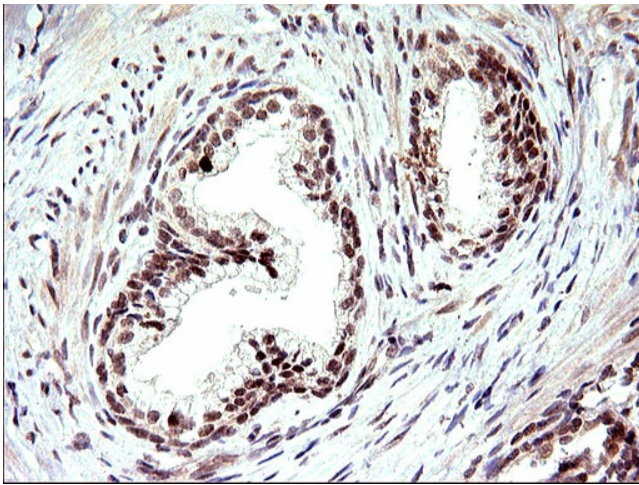


Immunohistochemical staining of paraffin-embedded Adenocarcinoma of Human endometrium tissue using anti-NDN mouse monoclonal antibody. (Heat-induced epitope retrieval by 10mM citric buffer, pH6.0, 120°C for 3min, TA506975)

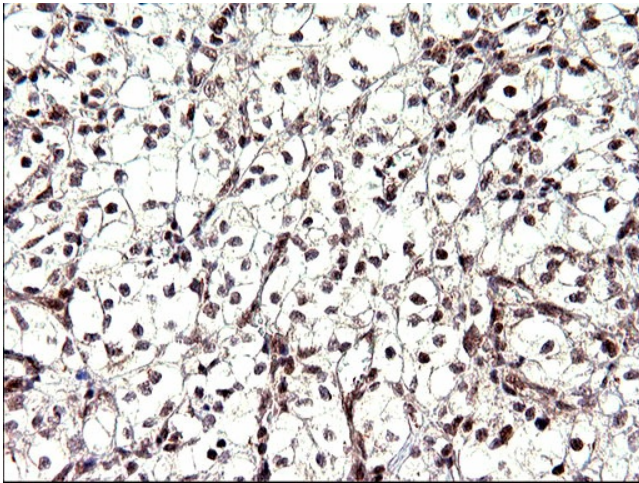




Immunohistochemical staining of paraffin-embedded Human prostate tissue within the normal limits using anti-NDN mouse monoclonal antibody. (Heat-induced epitope retrieval by 10mM citric buffer, pH6.0, 120°C for 3min, TA506975)

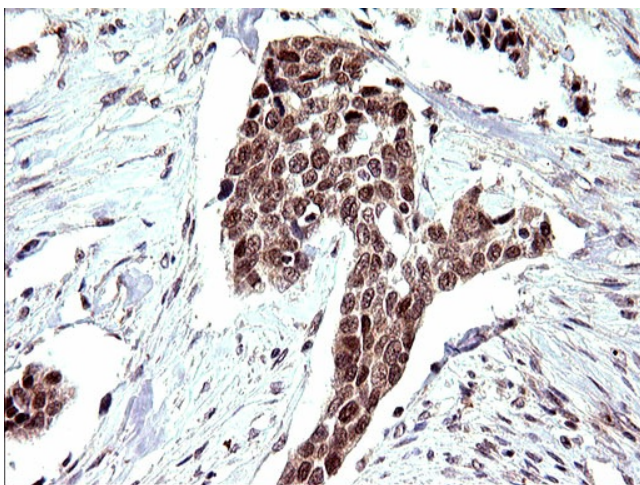


Immunohistochemical staining of paraffin-embedded Carcinoma of Human prostate tissue using anti-NDN mouse monoclonal antibody. (Heat-induced epitope retrieval by 10mM citric buffer, pH6.0, 120°C for 3min, TA506975)

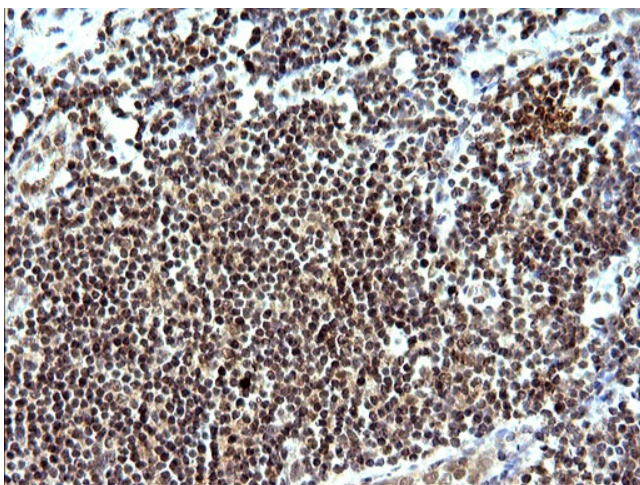


Immunohistochemical staining of paraffin-embedded Human bladder tissue within the normal limits using anti-NDN mouse monoclonal antibody. (Heat-induced epitope retrieval by 10mM citric buffer, pH6.0, 120°C for 3min, TA506975)

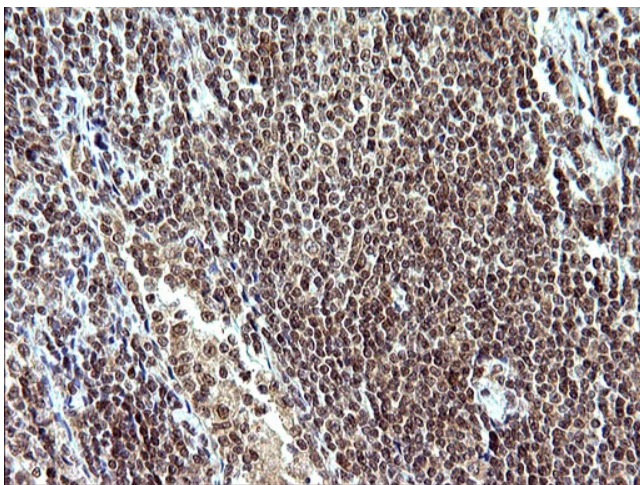




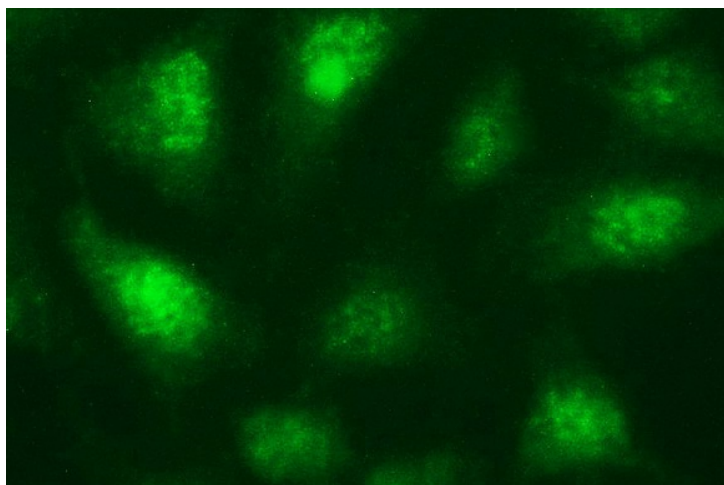
Immunohistochemical staining of paraffin-embedded Carcinoma of Human bladder tissue using anti-NDN mouse monoclonal antibody. (Heat-induced epitope retrieval by 10mM citric buffer, pH6.0, 120°C for 3min, TA506975)



Immunohistochemical staining of paraffin-embedded Human lymph node tissue within the normal limits using anti-NDN mouse monoclonal antibody. (Heat-induced epitope retrieval by 10mM citric buffer, pH6.0, 120°C for 3min, TA506975)



Immunohistochemical staining of paraffin-embedded Human lymphoma tissue using anti-NDN mouse monoclonal antibody. (Heat-induced epitope retrieval by 10mM citric buffer, pH6.0, 120°C for 3min, TA506975)



Immunofluorescent staining of HeLa cells using anti-NDN mouse monoclonal antibody (TA506975).