

Product datasheet for **TA506849**

IL1 alpha (IL1A) Mouse Monoclonal Antibody [Clone ID: OTI2F8]

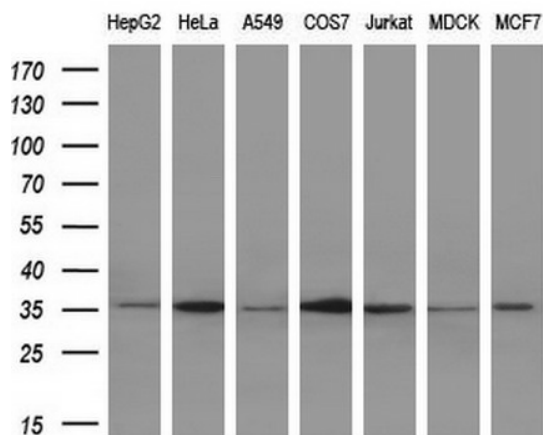
Product data:

Product Type:	Primary Antibodies
Clone Name:	OTI2F8
Applications:	IF, IHC, WB
Recommend Dilution:	WB 1:2000, IHC 1:150, IF 1:100
Reactivity:	Human
Host:	Mouse
Isotype:	IgG1
Clonality:	Monoclonal
Immunogen:	Full length human recombinant protein of human IL1A(NP_000566) produced in HEK293T cell.
Formulation:	PBS (PH 7.3) containing 1% BSA, 50% glycerol and 0.02% sodium azide.
Concentration:	1 mg/ml
Purification:	Purified from mouse ascites fluids or tissue culture supernatant by affinity chromatography (protein A/G)
Predicted Protein Size:	30.4 kDa
Gene Name:	interleukin 1 alpha
Database Link:	NP_000566 Entrez Gene 3552 Human
Synonyms:	IL-1A; IL1; IL1-ALPHA; IL1F1
Protein Families:	Druggable Genome, Secreted Protein
Protein Pathways:	Apoptosis, Cytokine-cytokine receptor interaction, Graft-versus-host disease, Hematopoietic cell lineage, MAPK signaling pathway, Prion diseases, Type I diabetes mellitus

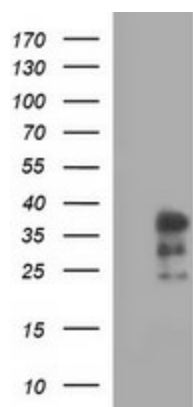


[View online »](#)

Product images:



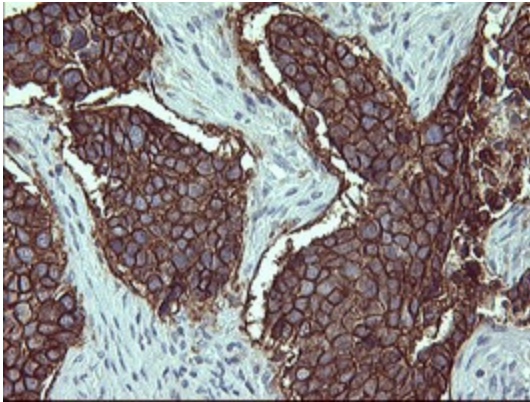
Western blot analysis of extracts (10ug) from 5 different cell lines by using anti-IL1A monoclonal antibody (1:200).



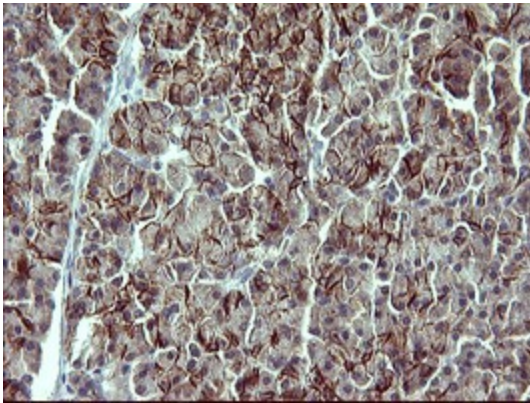
HEK293T cells lysate (5 ug, left lane) and full length human recombinant protein of human IL1A (NP_000566) produced in HEK293T cell (5 ug, right lane) were separated by SDS-PAGE and immunoblotted with anti-IL1A.



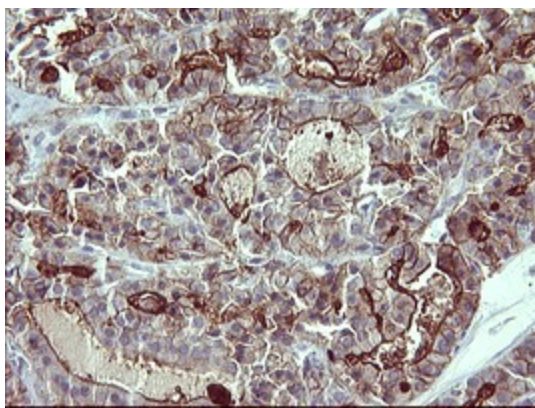
Immunohistochemical staining of paraffin-embedded Human breast tissue within the normal limits using anti-IL1A mouse monoclonal antibody. (Heat-induced epitope retrieval by 10mM citric buffer, pH6.0, 120°C for 3min, TA506849)



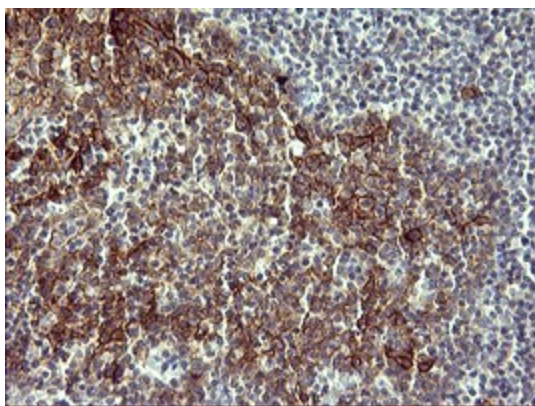
Immunohistochemical staining of paraffin-embedded Carcinoma of Human lung tissue using anti-IL1A mouse monoclonal antibody. (Heat-induced epitope retrieval by 10mM citric buffer, pH6.0, 120°C for 3min, TA506849)



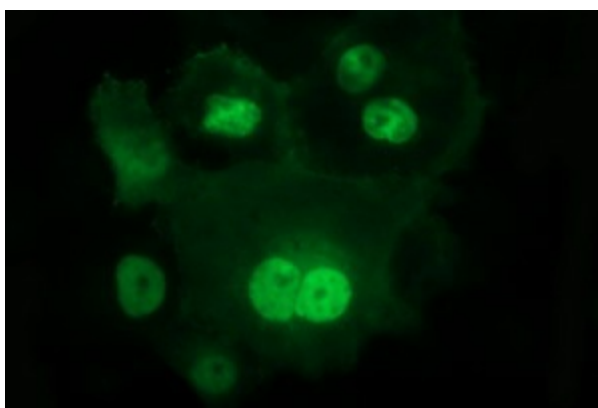
Immunohistochemical staining of paraffin-embedded Human pancreas tissue within the normal limits using anti-IL1A mouse monoclonal antibody. (Heat-induced epitope retrieval by 10mM citric buffer, pH6.0, 120°C for 3min, TA506849)



Immunohistochemical staining of paraffin-embedded Carcinoma of Human thyroid tissue using anti-IL1A mouse monoclonal antibody. (Heat-induced epitope retrieval by 10mM citric buffer, pH6.0, 120°C for 3min, TA506849)



Immunohistochemical staining of paraffin-embedded Human lymph node tissue within the normal limits using anti-IL1A mouse monoclonal antibody. (Heat-induced epitope retrieval by 10mM citric buffer, pH6.0, 120°C for 3min, TA506849)



Anti-IL1A mouse monoclonal antibody (TA506849) immunofluorescent staining of COS7 cells transiently transfected by pCMV6-ENTRY IL1A ([RC202084]).