

## Product datasheet for **TA505664**

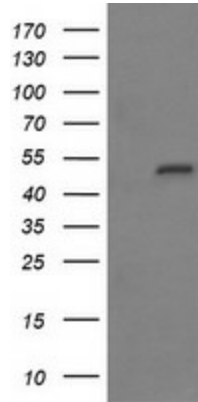
### **MYBPH Mouse Monoclonal Antibody [Clone ID: OTI3G1]**

#### **Product data:**

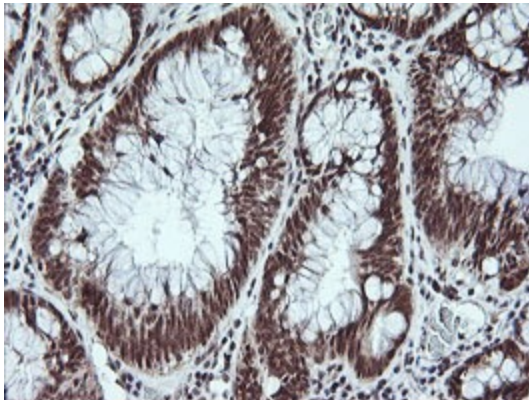
<b>Product Type:</b>	Primary Antibodies
<b>Clone Name:</b>	OTI3G1
<b>Applications:</b>	IF, IHC, WB
<b>Recommend Dilution:</b>	WB 1:4000, IHC 1:150, IF 1:100
<b>Reactivity:</b>	Human
<b>Host:</b>	Mouse
<b>Isotype:</b>	IgG2a
<b>Clonality:</b>	Monoclonal
<b>Immunogen:</b>	Full length human recombinant protein of human MYBPH(NP_004988) produced in HEK293T cell.
<b>Formulation:</b>	PBS (PH 7.3) containing 1% BSA, 50% glycerol and 0.02% sodium azide.
<b>Concentration:</b>	1 mg/ml
<b>Purification:</b>	Purified from mouse ascites fluids or tissue culture supernatant by affinity chromatography (protein A/G)
<b>Predicted Protein Size:</b>	51.9 kDa
<b>Gene Name:</b>	myosin binding protein H
<b>Database Link:</b>	<a href="#">NP_004988</a> <a href="#">Entrez Gene 4608</a> <a href="#">Human</a>
<b>Synonyms:</b>	myosin-binding protein H; myosin binding protein H; OTTHUMP00000039086



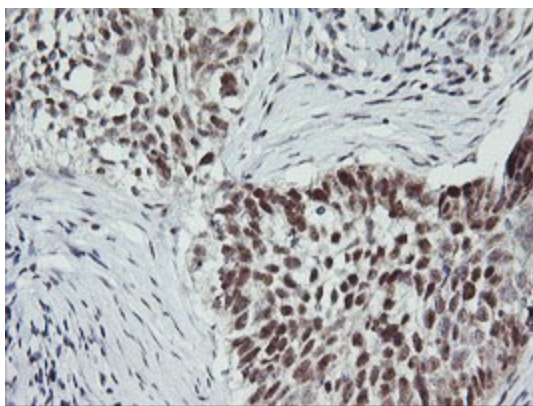
[View online »](#)

**Product images:**

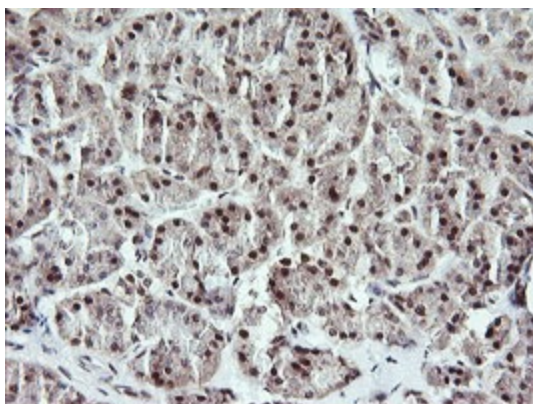
HEK293T cells were transfected with the pCMV6-ENTRY control (Left lane) or pCMV6-ENTRY MYBPH ([RC208162], Right lane) cDNA for 48 hrs and lysed. Equivalent amounts of cell lysates (5 ug per lane) were separated by SDS-PAGE and immunoblotted with anti-MYBPH. Positive lysates [LY417599] (100ug) and [LC417599] (20ug) can be purchased separately from OriGene.



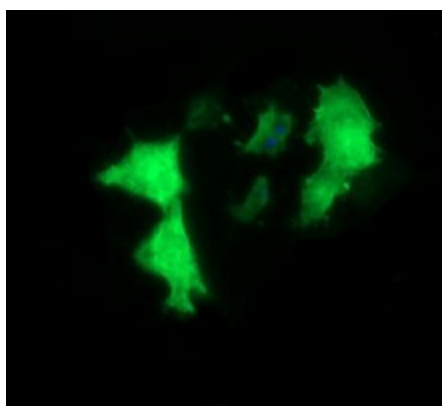
Immunohistochemical staining of paraffin-embedded Adenocarcinoma of Human colon tissue using anti-MYBPH mouse monoclonal antibody. (Heat-induced epitope retrieval by 10mM citric buffer, pH6.0, 120°C for 3min, TA505664)



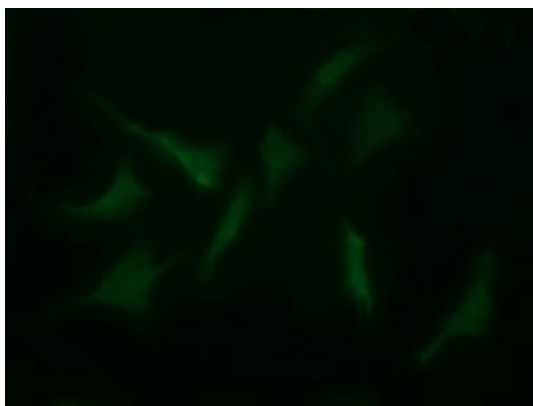
Immunohistochemical staining of paraffin-embedded Carcinoma of Human lung tissue using anti-MYBPH mouse monoclonal antibody. (Heat-induced epitope retrieval by 10mM citric buffer, pH6.0, 120°C for 3min, TA505664)



Immunohistochemical staining of paraffin-embedded Human pancreas tissue within the normal limits using anti-MYBPH mouse monoclonal antibody. (Heat-induced epitope retrieval by 10mM citric buffer, pH6.0, 120°C for 3min, TA505664)



Anti-MYBPH mouse monoclonal antibody (TA505664) immunofluorescent staining of COS7 cells transiently transfected by pCMV6-ENTRY MYBPH ([RC208162]).



Immunofluorescent staining of HeLa cells using anti-MYBPH mouse monoclonal antibody (TA505664).