

Product datasheet for TA505612

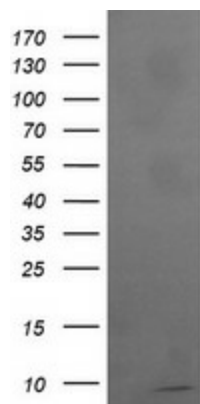
ROMO1 Mouse Monoclonal Antibody [Clone ID: OTI1G4]

Product data:

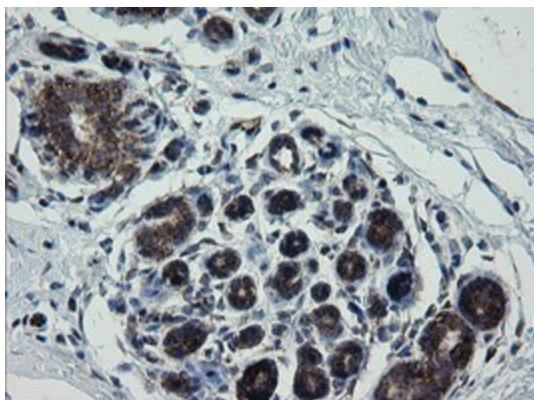
Product Type:	Primary Antibodies
Clone Name:	OTI1G4
Applications:	IF, IHC, WB
Recommend Dilution:	WB 1:2000, IHC 1:150, IF 1:100
Reactivity:	Human
Host:	Mouse
Isotype:	IgG2b
Clonality:	Monoclonal
Immunogen:	Full length human recombinant protein of human ROMO1(NP_542786) produced in HEK293T cell.
Formulation:	PBS (PH 7.3) containing 1% BSA, 50% glycerol and 0.02% sodium azide.
Concentration:	1 mg/ml
Purification:	Purified from mouse ascites fluids or tissue culture supernatant by affinity chromatography (protein A/G)
Gene Name:	reactive oxygen species modulator 1
Database Link:	NP_542786 Entrez Gene 140823 Human
Synonyms:	bA353C18.2; C20orf52; MTGM; MTGMP
Protein Families:	Transmembrane



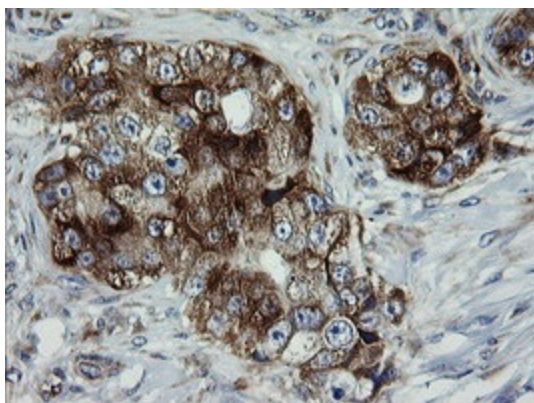
[View online »](#)

Product images:

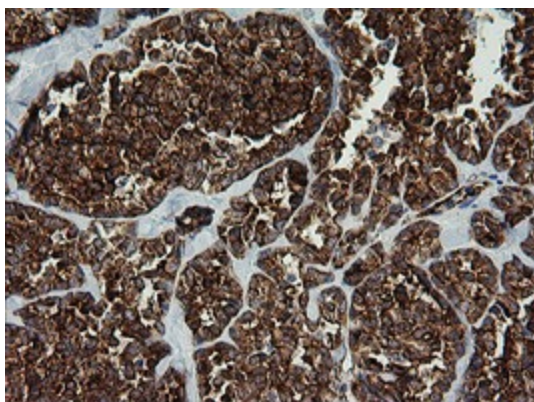
HEK293T cells were transfected with the pCMV6-ENTRY control (Left lane) or pCMV6-ENTRY ROMO1 ([RC210655], Right lane) cDNA for 48 hrs and lysed. Equivalent amounts of cell lysates (5 ug per lane) were separated by SDS-PAGE and immunoblotted with anti-ROMO1. Positive lysates [LY409065] (100ug) and [LC409065] (20ug) can be purchased separately from OriGene.



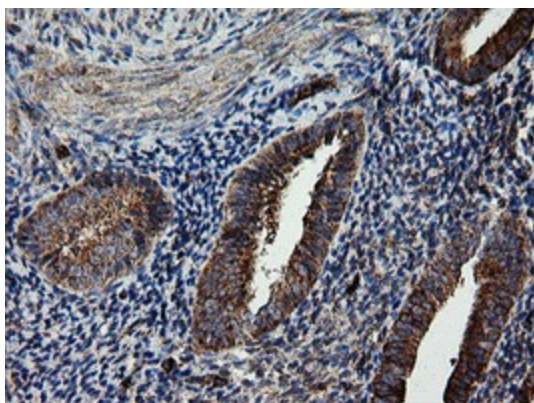
Immunohistochemical staining of paraffin-embedded Human breast tissue within the normal limits using anti-ROMO1 mouse monoclonal antibody. (Heat-induced epitope retrieval by 10mM citric buffer, pH6.0, 120°C for 3min, TA505612)



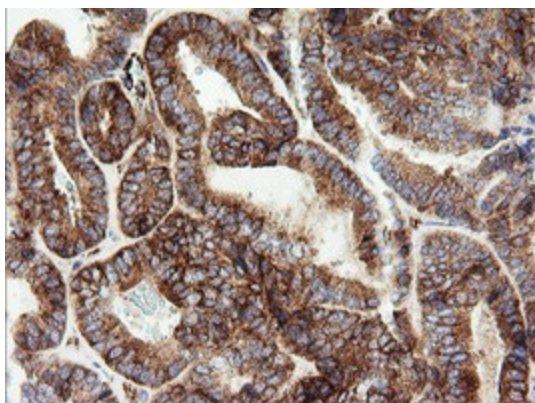
Immunohistochemical staining of paraffin-embedded Adenocarcinoma of Human breast tissue using anti-ROMO1 mouse monoclonal antibody. (Heat-induced epitope retrieval by 10mM citric buffer, pH6.0, 120°C for 3min, TA505612)



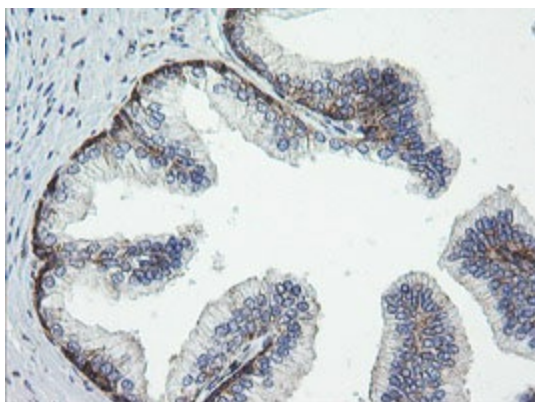
Immunohistochemical staining of paraffin-embedded Carcinoma of Human thyroid tissue using anti-ROMO1 mouse monoclonal antibody. (Heat-induced epitope retrieval by 10mM citric buffer, pH6.0, 120°C for 3min, TA505612)



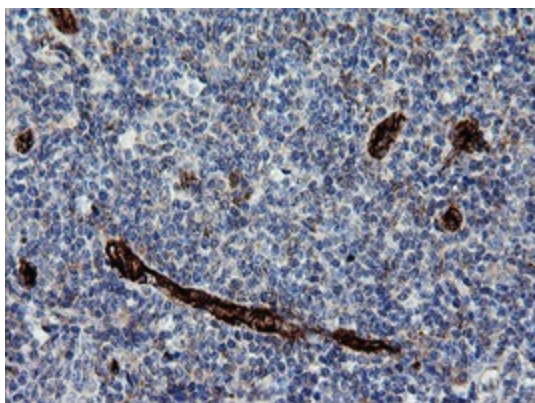
Immunohistochemical staining of paraffin-embedded Human endometrium tissue within the normal limits using anti-ROMO1 mouse monoclonal antibody. (Heat-induced epitope retrieval by 10mM citric buffer, pH6.0, 120°C for 3min, TA505612)



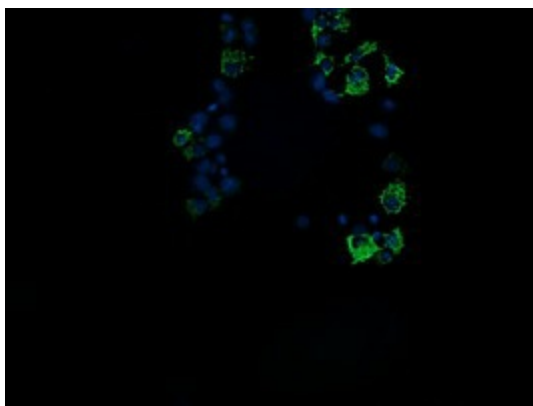
Immunohistochemical staining of paraffin-embedded Adenocarcinoma of Human endometrium tissue using anti-ROMO1 mouse monoclonal antibody. (Heat-induced epitope retrieval by 10mM citric buffer, pH6.0, 120°C for 3min, TA505612)



Immunohistochemical staining of paraffin-embedded Human prostate tissue within the normal limits using anti-ROMO1 mouse monoclonal antibody. (Heat-induced epitope retrieval by 10mM citric buffer, pH6.0, 120°C for 3min, TA505612)



Immunohistochemical staining of paraffin-embedded Human tonsil within the normal limits using anti-ROMO1 mouse monoclonal antibody. (Heat-induced epitope retrieval by 10mM citric buffer, pH6.0, 120°C for 3min, TA505612)



Anti-ROMO1 mouse monoclonal antibody (TA505612) immunofluorescent staining of COS7 cells transiently transfected by pCMV6-ENTRY ROMO1 ([RC210655]).