

## Product datasheet for TA505437

### GADD45G Mouse Monoclonal Antibody [Clone ID: OTI2F12]

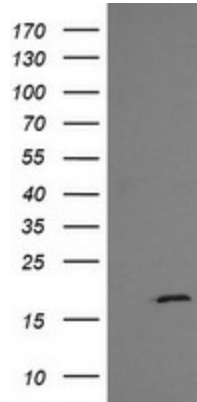
#### Product data:

Product Type:	Primary Antibodies
Clone Name:	OTI2F12
Applications:	IF, IHC, IP, WB
Recommend Dilution:	WB 1:4000, IHC 1:150, IF 1:100
Reactivity:	Human
Host:	Mouse
Isotype:	IgG1
Clonality:	Monoclonal
Immunogen:	Full length human recombinant protein of human GADD45G(NP_006696) produced in HEK293T cell.
Formulation:	PBS (PH 7.3) containing 1% BSA, 50% glycerol and 0.02% sodium azide.
Concentration:	1 mg/ml
Purification:	Purified from mouse ascites fluids or tissue culture supernatant by affinity chromatography (protein A/G)
Predicted Protein Size:	16.9 kDa
Gene Name:	growth arrest and DNA damage inducible gamma
Database Link:	<a href="#">NP_006696 Entrez Gene 10912 Human</a>
Background:	This gene is a member of a group of genes whose transcript levels are increased following stressful growth arrest conditions and treatment with DNA-damaging agents. The protein encoded by this gene responds to environmental stresses by mediating activation of the p38/JNK pathway via MTK1/MEKK4 kinase. The GADD45G is highly expressed in placenta. [provided by RefSeq, Jul 2008]
Synonyms:	CR6; DDIT2; GADD45gamma; GRP17
Protein Pathways:	Cell cycle, MAPK signaling pathway, p53 signaling pathway



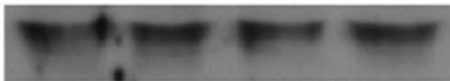
[View online »](#)

Product images:



HEK293T cells were transfected with the pCMV6-ENTRY control (Left lane) or pCMV6-ENTRY GADD45G [RC201364], Right lane) cDNA for 48 hrs and lysed. Equivalent amounts of cell lysates (5 ug per lane) were separated by SDS-PAGE and immunoblotted with anti-GADD45G. Positive lysates [LY416476] (100ug) and [LC416476] (20ug) can be purchased separately from OriGene.

Detroit 562

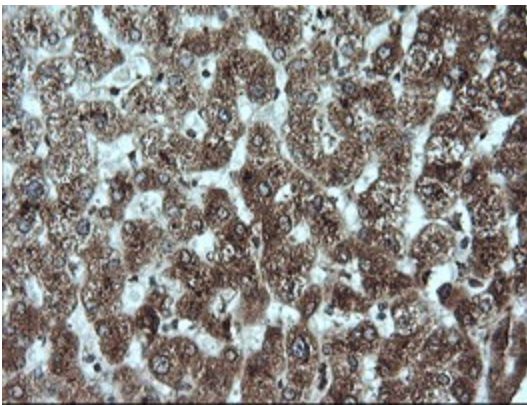


Hone-1

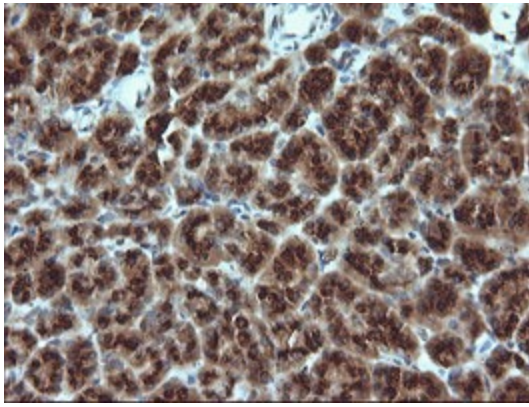


WB:Gadd45  $\gamma$

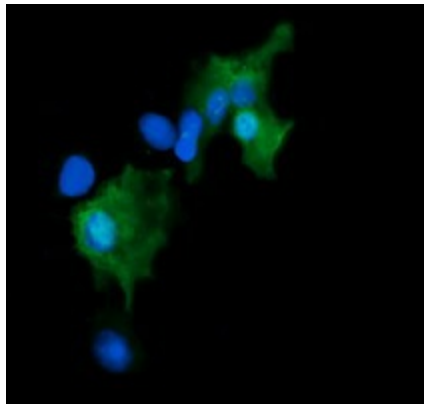
Figure from citation: Western Blot of GADD45G protein level by using anti-GADD45G antibody in human NPC cell lines. [View Citation](#)



Immunohistochemical staining of paraffin-embedded Human liver tissue within the normal limits using anti-GADD45G mouse monoclonal antibody. (Heat-induced epitope retrieval by 10mM citric buffer, pH6.0, 120°C for 3min, TA505437)



Immunohistochemical staining of paraffin-embedded Human pancreas tissue within the normal limits using anti-GADD45G mouse monoclonal antibody. (Heat-induced epitope retrieval by 10mM citric buffer, pH6.0, 120°C for 3min, TA505437)



Anti-GADD45G mouse monoclonal antibody (TA505437) immunofluorescent staining of COS7 cells transiently transfected by pCMV6-ENTRY GADD45G ([RC201364]).

	N	I	II	III	SiRNA
	+	+	+	+	CuE 1.25 $\mu$ M
Detroit 562					IP:Gadd45 $\gamma$
Hone-1					WB: CDC2

Figure from citation: Immunoprecipitation of GADD45G protein level by using anti-GADD45G antibody in human NPC cell lines. [View Citation](#)

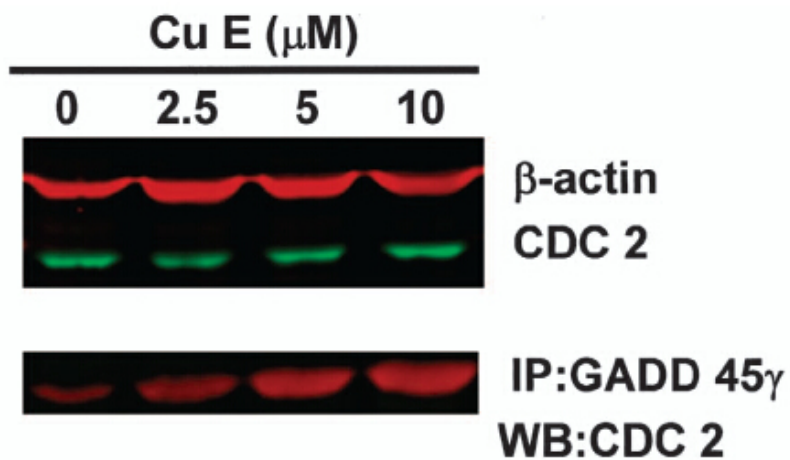


Figure from citation: Immunoprecipitation of GADD45G protein level by using anti-GADD45G antibody in human GBM8401 cells. [View Citation](#)

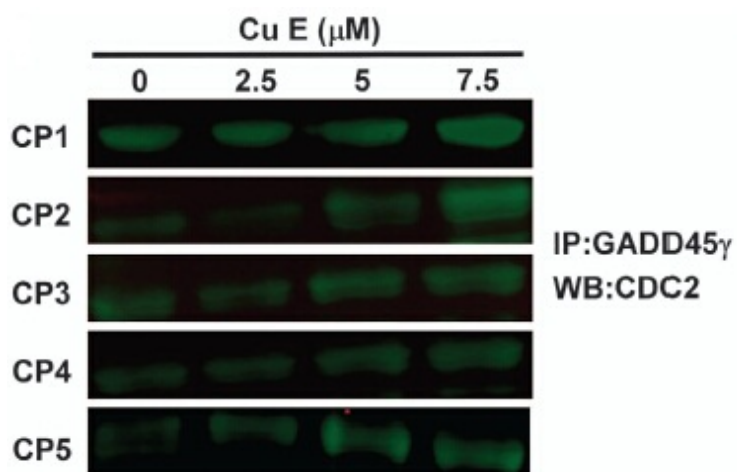


Figure from citation: Immunoprecipitation of GADD45G protein level by using anti-GADD45G antibody in human CRC cells. [View Citation](#)