

Product datasheet for TA505268

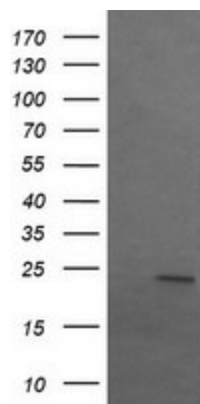
SRX Mouse Monoclonal Antibody [Clone ID: OT11G6]

Product data:

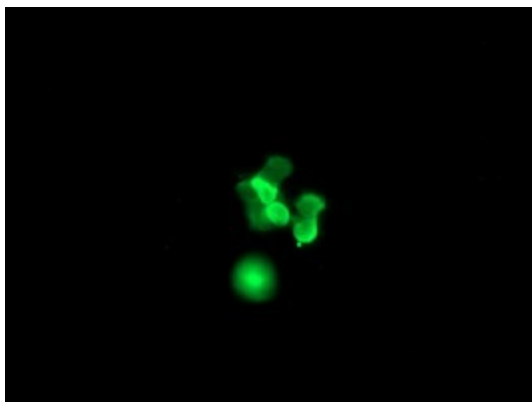
Product Type:	Primary Antibodies
Clone Name:	OT11G6
Applications:	IF, WB
Recommend Dilution:	WB 1:500, IF 1:100
Reactivity:	Human
Host:	Mouse
Isotype:	IgG1
Clonality:	Monoclonal
Immunogen:	Full length human recombinant protein of human SRX(NP_003131) produced in E.coli.
Formulation:	PBS (PH 7.3) containing 1% BSA, 50% glycerol and 0.02% sodium azide.
Concentration:	1 mg/ml
Purification:	Purified from mouse ascites fluids or tissue culture supernatant by affinity chromatography (protein A/G)
Predicted Protein Size:	23.7 kDa
Gene Name:	sex determining region Y
Database Link:	NP_003131 Entrez Gene 6736 Human
Background:	This intronless gene encodes a transcription factor that is a member of the high mobility group (HMG)-box family of DNA-binding proteins. This protein is the testis-determining factor (TDF), which initiates male sex determination. Mutations in this gene give rise to XY females with gonadal dysgenesis (Swyer syndrome); translocation of part of the Y chromosome containing this gene to the X chromosome causes XX male syndrome. [provided by RefSeq, Jul 2008]
Synonyms:	SRXX1; SRXY1; TDF; TDY



[View online »](#)

Product images:

HEK293T cells were transfected with the pCMV6-ENTRY control (Left lane) or pCMV6-ENTRY SRY ([RC210382], Right lane) cDNA for 48 hrs and lysed. Equivalent amounts of cell lysates (5 ug per lane) were separated by SDS-PAGE and immunoblotted with anti-SRY. Positive lysates [LY418872] (100ug) and [LC418872] (20ug) can be purchased separately from OriGene.



Anti-SRY mouse monoclonal antibody (TA505268) immunofluorescent staining of COS7 cells transiently transfected by pCMV6-ENTRY SRY ([RC210382]).