

Product datasheet for TA505239

UBE2G2 Mouse Monoclonal Antibody [Clone ID: OTI5F1]

Product data:

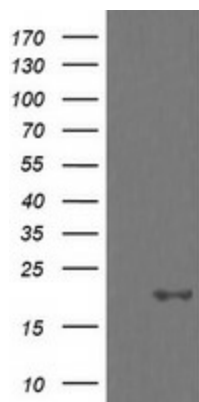
Product Type:	Primary Antibodies
Clone Name:	OTI5F1
Applications:	IF, IHC, WB
Recommend Dilution:	WB 1:200~2000, IHC 1:150, IF 1:100
Reactivity:	Human, Monkey, Mouse, Rat, Dog
Host:	Mouse
Isotype:	IgG2a
Clonality:	Monoclonal
Immunogen:	Full length human recombinant protein of human UBE2G2(NP_003334) produced in HEK293T cell.
Formulation:	PBS (PH 7.3) containing 1% BSA, 50% glycerol and 0.02% sodium azide.
Concentration:	1 mg/ml
Purification:	Purified from mouse ascites fluids or tissue culture supernatant by affinity chromatography (protein A/G)
Predicted Protein Size:	18.4 kDa
Gene Name:	ubiquitin conjugating enzyme E2 G2
Database Link:	NP_003334 Entrez Gene 22213 MouseEntrez Gene 294331 RatEntrez Gene 611581 DogEntrez Gene 710862 MonkeyEntrez Gene 7327 Human
Background:	The modification of proteins with ubiquitin is an important cellular mechanism for targeting abnormal or short-lived proteins for degradation. Ubiquitination involves at least three classes of enzymes: ubiquitin-activating enzymes, or E1s, ubiquitin-conjugating enzymes, or E2s, and ubiquitin-protein ligases, or E3s. This gene encodes a member of the E2 ubiquitin-conjugating enzyme family. The encoded protein shares 100% sequence identity with the mouse counterpart. This gene is ubiquitously expressed, with high expression seen in adult muscle. Three alternatively spliced transcript variants encoding distinct isoforms have been found for this gene. [provided by RefSeq, Jan
Synonyms:	UBC7
Protein Families:	Druggable Genome



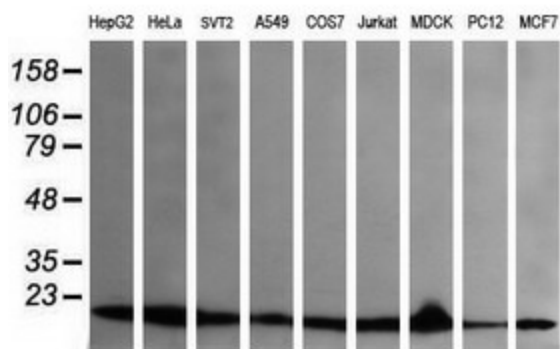
[View online »](#)

Protein Pathways: Parkinson's disease, Ubiquitin mediated proteolysis

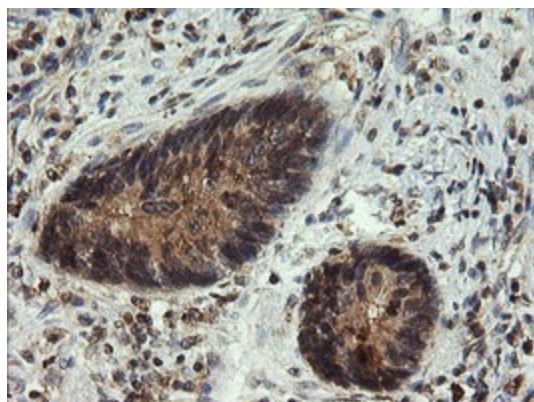
Product images:



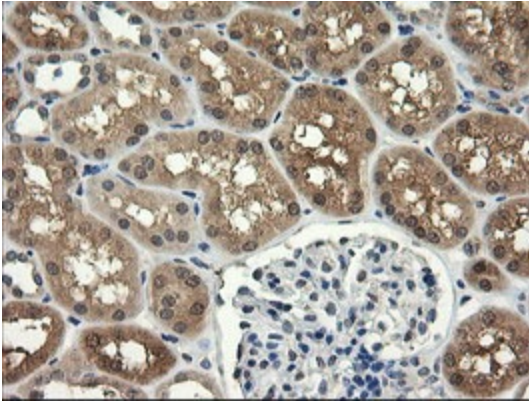
HEK293T cells were transfected with the pCMV6-ENTRY control (Left lane) or pCMV6-ENTRY UBE2G2 ([RC200407], Right lane) cDNA for 48 hrs and lysed. Equivalent amounts of cell lysates (5 ug per lane) were separated by SDS-PAGE and immunoblotted with anti-UBE2G2. Positive lysates [LY418761] (100ug) and [LC418761] (20ug) can be purchased separately from OriGene.



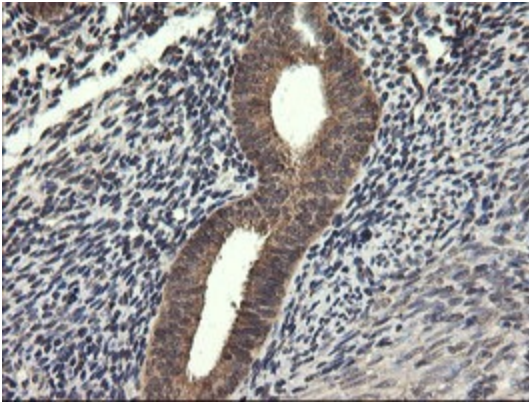
Western blot analysis of extracts (35ug) from 9 different cell lines by using anti-UBE2G2 monoclonal antibody (HepG2: human; HeLa: human; SVT2: mouse; A549: human; COS7: monkey; Jurkat: human; MDCK: canine; PC12: rat; MCF7: human).



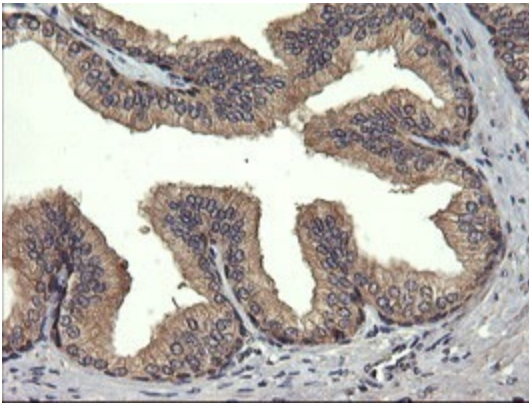
Immunohistochemical staining of paraffin-embedded Adenocarcinoma of Human colon tissue using anti-UBE2G2 mouse monoclonal antibody. (Heat-induced epitope retrieval by 10mM citric buffer, pH6.0, 120°C for 3min, TA505239)



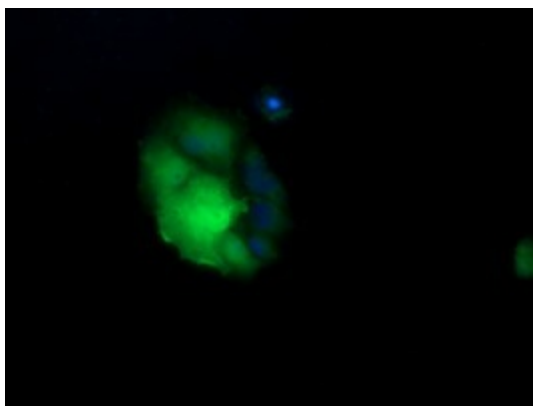
Immunohistochemical staining of paraffin-embedded Human Kidney tissue within the normal limits using anti-UBE2G2 mouse monoclonal antibody. (Heat-induced epitope retrieval by 10mM citric buffer, pH6.0, 120°C for 3min, TA505239)



Immunohistochemical staining of paraffin-embedded Human endometrium tissue within the normal limits using anti-UBE2G2 mouse monoclonal antibody. (Heat-induced epitope retrieval by 10mM citric buffer, pH6.0, 120°C for 3min, TA505239)



Immunohistochemical staining of paraffin-embedded Human prostate tissue within the normal limits using anti-UBE2G2 mouse monoclonal antibody. (Heat-induced epitope retrieval by 10mM citric buffer, pH6.0, 120°C for 3min, TA505239)



Anti-UBE2G2 mouse monoclonal antibody (TA505239) immunofluorescent staining of COS7 cells transiently transfected by pCMV6-ENTRY UBE2G2 ([RC200407]).