

## Product datasheet for **TA505188**

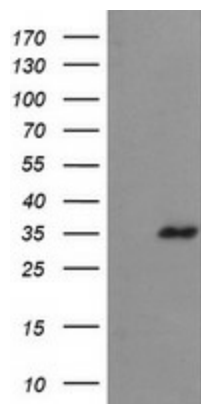
### CGI 62 (ZC2HC1A) Mouse Monoclonal Antibody [Clone ID: OTI4G2]

#### Product data:

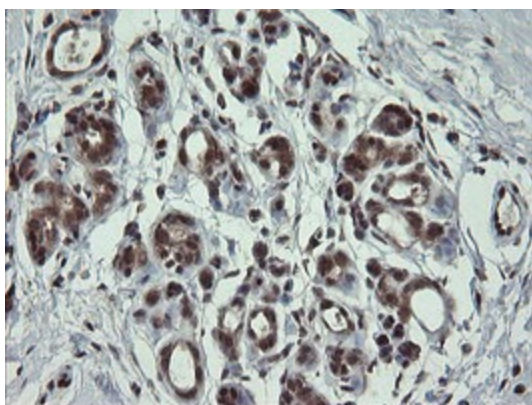
Product Type:	Primary Antibodies
Clone Name:	OTI4G2
Applications:	IHC, WB
Recommend Dilution:	WB 1:2000, IHC 1:150
Reactivity:	Human
Host:	Mouse
Isotype:	IgG1
Clonality:	Monoclonal
Immunogen:	Full length human recombinant protein of human FAM164A(NP_057094) produced in E.coli.
Formulation:	PBS (PH 7.3) containing 1% BSA, 50% glycerol and 0.02% sodium azide.
Concentration:	1 mg/ml
Purification:	Purified from mouse ascites fluids or tissue culture supernatant by affinity chromatography (protein A/G)
Predicted Protein Size:	34.9 kDa
Gene Name:	zinc finger C2HC-type containing 1A
Database Link:	<a href="#">NP_057094</a> <a href="#">Entrez Gene 51101 Human</a>
Synonyms:	C8orf70; CGI-62; FAM164A



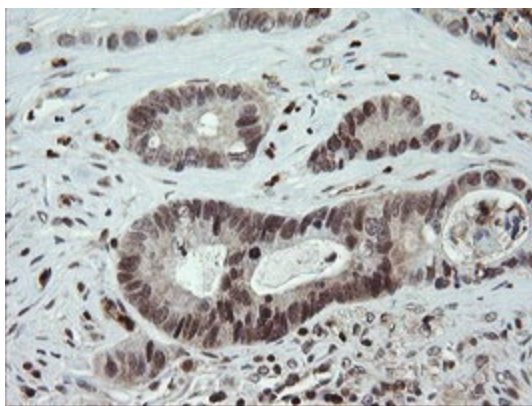
[View online »](#)

**Product images:**

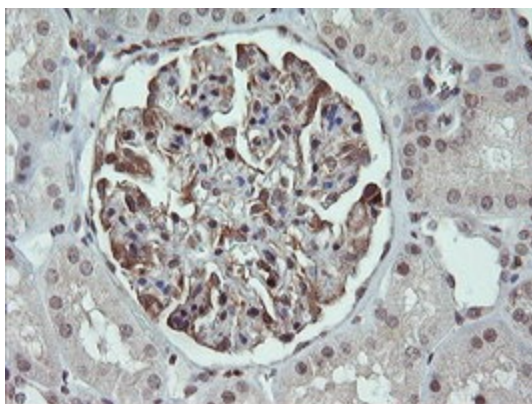
HEK293T cells were transfected with the pCMV6-ENTRY control (Left lane) or pCMV6-ENTRY FAM164A ([RC201868], Right lane) cDNA for 48 hrs and lysed. Equivalent amounts of cell lysates (5 ug per lane) were separated by SDS-PAGE and immunoblotted with anti-FAM164A. Positive lysates [LY414251] (100ug) and [LC414251] (20ug) can be purchased separately from OriGene.



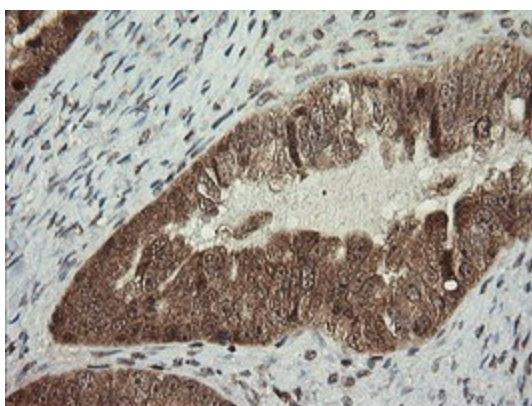
Immunohistochemical staining of paraffin-embedded Human breast tissue within the normal limits using anti-FAM164A mouse monoclonal antibody. (Heat-induced epitope retrieval by 10mM citric buffer, pH6.0, 100°C for 10min, TA505188)



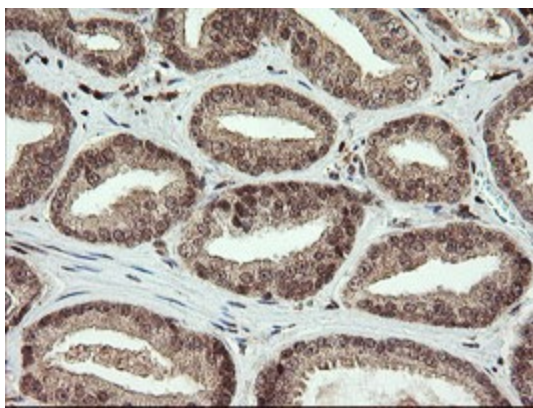
Immunohistochemical staining of paraffin-embedded Adenocarcinoma of Human colon tissue using anti-FAM164A mouse monoclonal antibody. (Heat-induced epitope retrieval by 10mM citric buffer, pH6.0, 100°C for 10min, TA505188)



Immunohistochemical staining of paraffin-embedded Human Kidney tissue within the normal limits using anti-FAM164A mouse monoclonal antibody. (Heat-induced epitope retrieval by 10mM citric buffer, pH6.0, 100°C for 10min, TA505188)



Immunohistochemical staining of paraffin-embedded Adenocarcinoma of Human ovary tissue using anti-FAM164A mouse monoclonal antibody. (Heat-induced epitope retrieval by 10mM citric buffer, pH6.0, 100°C for 10min, TA505188)



Immunohistochemical staining of paraffin-embedded Human prostate tissue within the normal limits using anti-FAM164A mouse monoclonal antibody. (Heat-induced epitope retrieval by 10mM citric buffer, pH6.0, 100°C for 10min, TA505188)